

TWR Lighting, Inc. HARK[®]

Enlightened Technology[®]

10810 W. LITTLE YORK RD. #130 HOUSTON, TX 77041-4051
VOICE (713) 973-6905 FAX (713) 973-9852
web: twrlighting.com

IMPORTANT!!!

PLEASE TAKE THE TIME TO FILL OUT THIS FORM COMPLETELY. FILE IT IN A SAFE PLACE. IN THE EVENT YOU EXPERIENCE PROBLEMS WITH OR HAVE QUESTIONS CONCERNING YOUR CONTROLLER, THE FOLLOWING INFORMATION IS NECESSARY TO OBTAIN PROPER SERVICE AND PARTS.

MODEL # AA4/7-MB

SERIAL # _____

PURCHASE DATE _____

PURCHASED FROM _____

TWR Lighting, Inc. **HARK**

Enlightened Technology

AA4/7-MB CONTROLLER

TABLE OF CONTENTS

1.0	GENERAL INFORMATION.....	1
2.0	INSTALLATION INSTRUCTIONS	2
2.1	MOUNTING THE CONTROL CABINET.....	2
2.2	EXTERNAL PHOTOCELL WIRING	3
2.3	POWER WIRING.....	3
2.4	RED BEACON AND SIDELIGHT WIRING.....	3
2.5	RED BEACON AND SIDELIGHT ALARM WIRING.....	4
3.0	MAJOR COMPONENTS PARTS LIST	7
3.1	POWER SUPPLY	7
3.2	SIDELIGHTS	7
3.3	BEACONS.....	8
3.4	LOAD BALANCE RESISTORS	8
4.0	MAINTENANCE GUIDE.....	9
4.1	RED OBSTRUCTION LIGHTING.....	9
4.2	L864 LAMP REPLACEMENT	9
4.3	L810 LAMP REPLACEMENT	9
4.4	L864 CONTROLLER.....	10
4.5	PHOTOCELL.....	10
5.0	MAJOR COMPONENTS PARTS LIST	11
6.0	RECOMMENDED SPARE PARTS LIST	12

WARRANTY & RETURN POLICY

RETURN MERCHANDISE AUTHORIZATION (RMA) FORM

TWR Lighting, Inc. HARK[®]

Enlightened Technology[®]

AA4/7-MB CONTROLLER

APPENDIX

CHASSIS COMPONENT LAYOUT	1130-R (REV F)
CHASSIS SCHEMATIC LAYOUT	1130-S (REV D)
TROUBLESHOOTING FLOW CHART	1130-F (REV A)
PHOTOCELL HOUSING DETAIL.....	100239 (REV H)
TOWER LIGHTING KIT 1,051' to 1,400'	263-7B (REV D)
SIDELIGHT MOUNT ASSEMBLY	100489 (REV A)
L-810 OL-1 SINGLE OBSTRUCTION LIGHT DETAIL.....	279-OL (REV C)
L-810 OL-1 WIRING DETAIL	274-S (REV A)
L-864 FM 300 MM BEACON WIRING DETAIL	275-B (REV E)
LOAD BALANCE RESISTOR DETAIL	276-R (REV C)
JUNCTION BOX DETAIL	100089 (REV A)
WRAPLOCK FASTENING DETAIL.....	100984

TWR Lighting[®], Inc. **HARK[®]**

Enlightened Technology[®]

AA4/7-MB CONTROLLER

1.0 GENERAL INFORMATION

The TWR Lighting[®], Inc. (TWR[®]) Model AA4/7-MB Controller is for A4 lighting of towers 1,051' to 1,400' AGL, in accordance with the FAA A/C 70/7460-1K. One (1) beacon should be placed at the top of the structure, two (2) beacons at the 3/4, 1/2, and 1/4 intervals with respect to overall tower height. Obstruction lights should be placed at the 7/8, 5/8, 3/8, and 1/8 intervals.

The flashing rate of the beacons is 30 per minute. The beacon flash synchronized to one another. The sidelights burn steady.

A by-pass switch allows the controller to be turned on during daylight hours without covering the photocell. This is particularly helpful since the controller is mounted indoors while the photocell is outdoors.

Each beacon requires two (2) 620W or two (2) 700W 120V bulbs. TWR[®] recommends that you use only these bulbs. The use of any other bulb may give a false beacon lamp burnout alarm. Do not try to use 130V bulbs. Each sidelight requires one (1) 116W 120V bulb (620PS40P, 700PS40P, and 116A21TS).

The photocell is the 3 blade, twist to lock type.

Power supplied to controller shall be 120/240V 3 wire single phase.

The controller housing is rated at NEMA 4X. It is suitable for indoor or outdoor mounting.

Controller functions that are monitored by remote alarms in the form of dry contact closures are as follows:

POWER FAILURE	Monitors 120V AC to the controller. Alarms in the event of power failure, or tripped circuit breaker.
LIGHTS "ON"	Gives an indication whenever the controller is activated.
BEACONS	Will give an alarm in the event of one (1) or both bulbs failing, or flasher stalling.
OBSTRUCTION LIGHTS	Will give an alarm when one (1) of three (3) sidelights fails.

TWR Lighting, Inc. **HARK**

Enlightened Technology

AA4/7-MB CONTROLLER

2.0 INSTALLATION INSTRUCTIONS

2.1 MOUNTING THE CONTROL CABINET

(Refer to Drawing 1130-R)

2.1.1 The power supply control cabinet can be located at the base of the structure or in an equipment building. Mounting footprints are shown on drawing 1130-R. Power wiring to the control cabinet should be in accordance with local methods and National Electrical Codes (NEC).

2.1.2 If the control cabinet is mounted inside an equipment building, the photocell should be mounted vertically on 1/2" conduit outside the building above the eaves facing north. Wiring from the photocell socket to the control cabinet should consist of one (1) each - red, black and white wires. The white wire is connected to the socket terminal marked "N." The black wire is connected to the socket terminal marked "Li," and the red wire is connected to the socket terminal marked "Lo." As above, the photocell should be positioned so that it does not "see" ambient light, which can prevent it from switching to the nightmode.

2.1.3 If the control cabinet is mounted outside an equipment building, the photocell should be mounted vertically on 1/2" conduit so the photocell is above the control cabinet. Care must be taken to assure that the photocell does not "see" any ambient assure that can prevent it from switching into the nightmode. The photocell wiring is the same as in 2.1.1.

2.1.4 The wiring from the photocell, the service breaker, the red incandescent beacons and the sidelights should enter the control cabinet through the watertight connectors in the bottom of the cabinet. Inside the cabinet, the connections will be made on the terminal blocks and circuit breaker located at the bottom of the chassis. These connections are made as follows:

TWR Lighting, Inc. **HARK**

Enlightened Technology

AA4/7-MB CONTROLLER

2.2 EXTERNAL PHOTOCELL WIRING

(Refer to Drawing 1130-R)

2.2.1 Connect the **BLACK** wire from the photocell to terminal block TB2 marked "L2."

2.2.2 Connect the **RED** wire from the photocell to terminal block TB2 marked "SSR."

2.2.3 Connect the **WHITE** wire from the photocell to terminal block TB2 marked "N."

2.3 POWER WIRING

(Refer to Drawing 1130-R)

2.3.1 Power wiring to the control cabinet should be in accordance with local methods and National Electrical Codes (NEC).

2.3.2 Circuit breaker needs to be a 2 pole common trip rated at 50 amps.

2.3.3 Connect incoming 120V AC "Hot #1" to terminal block TB1 marked "L1."

2.3.4 Connect incoming 120V AC "Hot #2" to terminal block TB1 marked "L2."

2.3.5 Connect neutral to one of the terminal blocks TB1 marked "N."

2.3.6 Connect the AC ground to the aluminum mounting plate.

2.4 RED BEACON AND SIDELIGHT WIRING

(Refer to Drawings 1130-R and 263-7B)

2.4.1 Connect the **BLACK** wire from beacon #1 to circuit breaker marked "B1."

2.4.2 Connect the first **BLUE** wire from beacon #2 to circuit breaker marked "B2."

TWR Lighting, Inc. **HARK**

Enlightened Technology®

AA4/7-MB CONTROLLER

- 2.4.3 Connect the second **BLUE** wire from beacon #3 to circuit breaker marked "B3."
- 2.4.4 Connect the first **BROWN** wire from beacon #4 to circuit breaker marked "B4."
- 2.4.5 Connect the second **BROWN** wire from beacon #5 to circuit breaker marked "B5."
- 2.4.6 Connect the third **BLACK** wire from beacon #6 to circuit breaker marked "B6."
- 2.4.7 Connect the fourth **BLACK** wire from beacon #7 to circuit breaker marked "B7."
- 2.4.8 Connect the **RED** wire from sidelight group #1 to circuit breaker marked "S1."
- 2.4.9 Connect the **YELLOW** wire from sidelight group #2 to circuit breaker marked "S2."
- 2.4.10 Connect the **ORANGE** wire from sidelight group #3 to circuit breaker marked "S3."
- 2.4.11 Connect the **PURPLE** wire from sidelight group #4 to circuit breaker marked "S4."
- 2.4.12 Connect the **WHITE** neutral wire(s) to one (1) or more of the terminal blocks on TB1, marked "N."

2.5 RED BEACON AND SIDELIGHT ALARM WIRING

(Refer to Drawings 1130-R and 1130-S)

- 2.5.1 Red light failure alarm relays K1 – K13 are provided on the left hand side of the chassis. Independent contact closures are provided for: Power Failure, Tower Lights "ON," Sidelight Levels S1 – S4 Burnout, and Beacon Burnout B1 – B7.

AA4/7-MB CONTROLLER

- 2.5.2 Alarm wiring: To utilize all of the red light alarms, the customer will need 26 pairs of wires to interface with the alarm device. One (1) wire from each of the 26 pairs will terminate at the relay K1, terminal #4. The remaining wire from each pair will terminate as follows:
- 2.5.2.1 Power Failure Alarm - Connect to relay K1 terminal #3.
 - 2.5.2.2 Tower Lights "ON" - Connect to relay K2 terminal #6.
 - 2.5.2.3 Sidelight Top Level Burnout - Connect to relay K3, terminal #3.
 - 2.5.2.4 Sidelight 2nd Level Burnout - Connect to relay K4, terminal #3.
 - 2.5.2.5 Sidelight 3rd Level Burnout - Connect to relay K5, terminal #3.
 - 2.5.2.6 Sidelight 4th Level Burnout – Connect to relay K6, terminal #3.
 - 2.5.2.7 Top Beacon Burnout – Connect to relay K7, terminal #6.
 - 2.5.2.8 2nd Beacon Burnout – Connect to relay K8, terminal #6.
 - 2.5.2.9 3rd Beacon Burnout – Connect to relay K9, terminal #6.
 - 2.5.2.10 4th Beacon Burnout – Connect to relay K10, terminal #6.
 - 2.5.2.11 5th Beacon Burnout – Connect to relay K11, terminal #6.

TWR Lighting, Inc. HARK[®]

Enlightened Technology[®]

AA4/7-MB CONTROLLER

- 2.5.2.12 6th Beacon Burnout – Connect to relay K12, terminal #6.
- 2.5.2.13 7th Beacon Burnout - Connect to relay K13, terminal #6.
- 2.5.3 Testing: To test alarms, follow the procedures using an "ohm" meter between alarm common and alarm points.

POWER FAILURE Pull circuit breaker at electrical panel.

LIGHTS "ON" Operate SW1, or cover the photocell.
NOTE: (Indication will be delayed 4 to 5 seconds for all the beacon and sidelight relays to position themselves).

BEACON AND SIDELIGHTS Trip circuit breakers on the controller panel.

TWR Lighting, Inc. HARK[®]

Enlightened Technology[®]

AA4/7-MB CONTROLLER

3.0 THEORY OF OPERATION

3.1 POWER SUPPLY

120/240V AC enters the controller from the circuit breaker panel. Lines (L1, L2) sit at the PRD waiting to be switched and also keep the power failure relay K1 energized. When the 6390-FAA photocell is activated, line (L2) energizes the coil of the PRD and K2 "Lights On" relay. This also can be accomplished by using the photocell by-pass switch (SW1).

3.2 SIDELIGHTS

LD1 is sent to the primary of the boost transformer T1. The boosted output LDB1 voltage (132V at 120V nominal input) is sent to relays K3 and K4, which are current sensing relays for sidelights S1 – S2. LD1 (120V) is sent to relays K5, and K6. The output of each sidelight relay is connected to its corresponding circuit breaker. Each 9KE-3 LAMP monitors one (1) level of sidelights, and will hold the contact open when three (3) lights are burning, but will give a contact closure if one (1) or more lights fails.

AA4/7-MB CONTROLLER

3.3 BEACONS

LD1, LD2, LD3, and LD4 are sent to the primary of boost transformers T1 – T4. The boosted output voltage (132V at 120V nominal input) from T1 – T3, is sent to the CS2620 current sensing modules M2, M4, M6, M8, and M10. The boosted output voltage (126V @ 120V nominal input) from T4 is sent to the CS2620 current sensing modules M12 and M14. The output of these current sensors is connected to the flasher module M1, and the load contactor modules M3, M5, M7, M9, M11, and M13. M1 is the primary flasher that operates beacon B1, and the coils of modules M3, M5, M7, M9, M11, and M13, which flashes beacons B2 – B7, synchronized with beacon B1. If one (1) or both bulbs within a beacon burns out, the CS2620 will send 120V to the beacon lamp burnout relay and energize the coil, which will cause an alarm. This condition will also exist if the flasher should fail. Resistor R1 is connected across the flasher to apply a "dummy load," so in the event the flasher should lose the beacon B1 load, the flasher would not try to stall on.

3.4 LOAD BALANCE RESISTORS

The output of module M1 (flasher) is also sent to the auxiliary flasher module M15 for timing purposes. M15 output operates Load Balance Resistor (R1), and is connected to modules M16, M17, and M18. M16 – M18 operate Load Balance Resistors (R2 – R4), synchronized with R1. The Load Balance Resistors will operate alternately from the flashing beacon loads. The use of this optional equipment is to help even the current draw on generator systems.

AA4/7-MB CONTROLLER

4.0 MAINTENANCE GUIDE

4.1 RED OBSTRUCTION LIGHTING

The only required maintenance that needs to be performed is replacement of the lamps in the L-864 and L-810 fixtures. Lamps should be replaced after being operated for not more than 75% of the rated life, or immediately upon failure as per FAA Advisory Circular 70/7460-1K, Change 2. By following these instructions, maximum safety and performance can be achieved.

TOOLS REQUIRED: NONE

4.2 L-864 LAMP REPLACEMENT

4.2.1 Loosen the one (1) wing nut on the latch pin and allow it to recline backward.

4.2.2 Open the lens and tilt it backward.

4.2.3 To remove each lamp, depress down while rotating the lamp counter-clockwise 90 degrees.

4.2.4 Install the new lamps by depressing down while rotating the lamp clockwise 90 degrees.

4.2.5 Close the lens and let the latch pin drop in the recessed slot.

4.2.6 Tighten the wing nut snug, then 1/4 turn more.

4.3 L-810 LAMP REPLACEMENT

4.3.1 Unclasp the two (2) latches, and allow the bail to recline backward.

4.3.2 Lift the lens up and over the lamp, allowing the lens to hang from the safety cable.

4.3.3 Unscrew the lamp counter-clockwise and remove.

AA4/7-MB CONTROLLER

4.3.4 Install the new lamp by screwing the lamp clockwise.

4.3.5 Re-install the lens making sure it is seated properly on the base.

4.4 L-864 CONTROLLER

No scheduled maintenance is required. Perform on an as needed basis only.

4.5 PHOTOCELL

The photocell is a sealed unit. No maintenance is needed or required, other than replacement as necessary.

AA4/7-MB CONTROLLER

5.0 MAJOR COMPONENTS PARTS LIST

QTY	PART #	DESCRIPTION
1	6390-FAA (This replaces the 102FAA Photocell)	120 – 240V AC PHOTOCELL
1	CR360L304	LOAD CONTACTOR
1	PF-250 (This replaces the FS155-30T Module)	SOLID STATE FLASHER (M1)
9	SF-250 (This replaces the FA155-2 module)	SOLID STATE LOAD CONTACTOR - (M3, M5, M7, M9, M11, M13, M16, M17 & M18)
1	B12J2K5	2500 ohm 12w RESISTOR
7	CS2620	BEACON LAMP BURNOUT DETECTOR – (M2, M4, M6, M8, M10, M12, & M14)
1	AF-250 (This replaces the FA155 module)	SOLID STATE AUXILIARY FLASHER (M15)
8	KRPA5AG120V	SPDT RELAY (K1, K7 – K13)
4	9KE-3LAMP	SIDELIGHT BURNOUT DETECTOR (K3 – K6)
1	SPEC 224	DELAY ON MAKE RELAY (K2)
3	P-5512	BOOST TRANSFORMERS (T1 – T4)
11	S261D20	20 amp BREAKER (B1 – B7, AND S1 – S4)
4	S201D30	30 amp BREAKER (R1 – R4)
2	MOV524V15	VARISTOR (MOV1 AND MOV2)

TWR Lighting, Inc. HARK®

Enlightened Technology®

AA4/7-MB CONTROLLER

6.0 RECOMMENDED SPARE PARTS LIST

QTY	PART #	DESCRIPTION
1	6390-FAA (This replaces the 102FAA Photocell)	120 – 240V AC PHOTOCCELL
1	PF-250 (This replaces the FS155-30T Module)	SOLID STATE FLASHER (M1)
1	CS2620	BEACON LAMP BURNOUT DETECTOR – (M2, M4, M6, M8, M10, M12, & M14)
1	SF-250 (This replaces the FA155-2 module)	SOLID STATE LOAD CONTACTOR - (M3, M5, M7, M9, M11, M13, M16, M17 & M18)
1	KRPA5AG120V	SPDT RELAY (K1, K7 – K13)
1	9KE-3LAMP	SIDELIGHT BURNOUT DETECTOR (K3 – K6)
2	S261D20	20 amp BREAKER (B1 – B7, and S1 – S4)
1	S201D30	30 amp Breaker (R1 – R4)
2	MOVS24V15	VARISTOR (MOV1 and MOV2)

TWR Lighting, Inc. **HARK**[®]

Enlightened Technology[®]

AA4/7-MB CONTROLLER

Warranty & Return Policy

TWR Lighting[®], Inc. (“TWR[®]”) warrants its products (other than “LED Product”) against defects in design, material (excluding incandescent bulbs) and workmanship for a period ending on the earlier of two (2) years from the date of shipment or one (1) year from the date of installation.

TWR Lighting[®], Inc. (“TWR[®]”) warrants its “LED Product” against defects in design, material and workmanship for a period of five (5) years from the date of shipment. TWR[®], at its sole option, will, itself, or through others, repair, replace or refund the purchase price paid for “LED Product” that TWR[®] verifies as being inoperable due to original design, material, or workmanship. All warranty replacement “LED Product” is warranted only for the remainder of the original warranty of the “LED Product” replaced. Replacement “LED Product” will be equivalent in function, but not necessarily identical, to the replaced “LED Product.”

TWR Lighting[®], Inc. (“TWR[®]”) warrants its “LED Product” against light degradation for a period of five (5) years from the date of installation. TWR[®], at its sole option, will, itself, or through others, repair, replace, or refund the purchase price paid for “LED Product” that TWR[®] verifies as failing to meet 75% of the minimum intensity requirements as defined in the FAA Advisory Circular 150/5345-43G dated 09/26/12. All warranty replacement “LED Product” is warranted only for the remainder of the original warranty of the “LED Product” replaced. Replacement “LED Product” will be equivalent in function, but not necessarily identical, to the replaced “LED Product.”

Replacement parts (other than “LED Product”) are warranted for 90 days from the date of shipment.

Conditions not covered by this Warranty, or which might void this Warranty are as follows:

- x Improper Installation or Operation
- x Misuse
- x Abuse
- x Unauthorized or Improper Repair or Alteration
- x Accident or Negligence in Use, Storage, Transportation, or Handling
- x Any Acts of God or Nature
- x **Non-OEM Parts**

The use of Non-OEM parts or modifications to original equipment design will void the manufacturer warranty and could invalidate the assurance of complying with FAA requirements as published in Advisory Circular 150/5345-43.

TWR Lighting, Inc. HARK[®]

Enlightened Technology[®]

AA4/7-MB CONTROLLER

Warranty & Return Policy (continued)

Field Service – Labor, Travel, and Tower Climb are not covered under warranty. Customer shall be obligated to pay for all incurred charges. An extensive network of certified and insured Service Representatives is available if requested.

Return Terms – You must first contact our Customer Service Department at **713-973-6905** to acquire a Return Merchandise Authorization (RMA) number in order to return the product(s). Please have the following information available when requesting an RMA number:

- x The contact name and phone number of the tower owner
- x The contact name and phone number of the contractor
- x The site name and number
- x The part number(s)
- x The serial number(s) (if any)
- x A description of the problem
- x The billing information
- x The Ship To address

This RMA number must be clearly visible on the outside of the box. If the RMA number is not clearly labeled on the outside of the box, your shipment will be refused. Please ensure the material you are returning is packaged carefully. **The warranty is null and void if the product(s) are damaged in the return shipment.**

All RMAs must be received by TWR LIGHTING[®], INC., 10810 W. LITTLE YORK RD. #130, HOUSTON, TX 77041-4051, within 30 days of issuance.

Upon full compliance with the Return Terms, TWR[®] will replace, repair and return, or credit product(s) returned by the customer. It is TWR[®]'s sole discretion to determine the disposition of the returned item(s).

TWR Lighting, Inc. **HARK**[®]

Enlightened Technology[®]

AA4/7-MB CONTROLLER

Warranty & Return Policy (continued)

Replacements – Replacement part(s) will be shipped and billed to the customer for product(s) considered as Warranty, pending return of defective product(s). When available, a certified reconditioned part is shipped as warranty replacement with a Return Merchandise Authorization (RMA) number attached. Upon receipt of returned product(s), inspection, testing, and evaluation will be performed to determine the cause of defect. The customer is then notified of the determination of the testing.

- x Product(s) that is deemed defective and/or unrepairable and covered under warranty - a credit will be issued to the customer's account.
- x Product(s) found to have no defect will be subject to a **\$75.00 per hour testing charge (1 hour minimum), which will be invoiced to the customer.** At this time the customer may decide to have the tested part(s) returned and is responsible for the return charges.
- x Product(s) under warranty, which the customer does not wish returned, the customer will be issued a credit against the replacement invoice.

Repair & Return – A Return Merchandise Authorization (RMA) will be issued for all part(s) returned to TWR[®] for repair. Upon receipt of returned product(s), inspection, testing, and evaluation will be performed to determine the cause of defect. The customer is then notified of the determination of the testing. If the returned part(s) is deemed unrepairable, or the returned part(s) is found to have no defect, the customer will be subject to a **\$75.00 per hour testing charge (1 hour minimum), which will be invoiced to the customer.** Should the returned parts be determined to be repairable, a written estimated cost of repair will be sent to the customer for their written approval prior to any work being performed. In order to have the tested part(s) repaired and/or returned, the customer must issue a purchase order and is responsible for the return shipping charges.

Return to Stock – Any order that is returned to TWR[®] for part(s) ordered incorrectly by the customer, or unneeded upon receipt, the customer is required to pay a **20% restocking fee.** A credit will be issued once it is determined that the Return Terms are met.

Credits – Credits are issued once it is determined that all of the Warranty and Return Terms are met. All credits are processed on Fridays. In the event a Friday falls on a Holiday, the credit will be issued on the following Friday.

Freight – All warranty replacement part(s) will be shipped via ground delivery and paid for by TWR[®]. Delivery other than ground is the responsibility of the customer.

TWR Lighting, Inc. **MARK**

Enlightened Technology

AA4/7-MB CONTROLLER

Warranty & Return Policy (continued)

REMEDIES UNDER THIS WARRANTY ARE LIMITED TO PROVISIONS OF REPLACEMENT PARTS AND REPAIRS AS SPECIFICALLY PROVIDED. IN NO EVENT SHALL TWR® BE LIABLE FOR ANY OTHER LOSSES, DAMAGES, COSTS, OR EXPENSES INCURRED BY THE CUSTOMER, INCLUDING, BUT NOT LIMITED TO, LOSS FROM FAILURE OF THE PRODUCT(S) TO OPERATE FOR ANY TIME, AND ALL OTHER DIRECT, INDIRECT, SPECIAL, INCIDENTAL, OR CONSEQUENTIAL DAMAGES, INCLUDING ALL PERSONAL INJURY OR PROPERTY DAMAGE DUE TO ALLEGED NEGLIGENCE, OR ANY OTHER LEGAL THEORY WHATSOEVER. THIS WARRANTY IS MADE BY TWR® EXPRESSLY IN LIEU OF ALL OTHER WARRANTIES, WHETHER EXPRESSED OR IMPLIED. WITHOUT LIMITING THE GENERALITY OF THE FORGOING, TWR® MAKES NO WARRANTY OF MERCHANTABILITY OR FITNESS OF THE PRODUCT(S) FOR ANY PARTICULAR PURPOSE. TWR® EXPRESSLY DISCLAIMS ALL OTHER WARRANTIES.

TWR Lighting, Inc. HARK[®]

Enlightened Technology[®]

AA4/7-MB CONTROLLER

RETURN MERCHANDISE AUTHORIZATION (RMA) FORM

RMA#: _____ **DATE:** _____

CUSTOMER: _____

CONTACT: _____ **PHONE NO.:** _____

ITEM DESCRIPTION (PART NO.): _____

MODEL NO.: _____ **SERIAL NO.:** _____

ORIGINAL TWR INVOICE NO.: _____ **DATED:** _____

DESCRIPTION OF PROBLEM: _____

SIGNED: _____ **DATE NEEDED:** _____

RETURN ADDRESS: _____

PLEASE RETURN PRODUCT TO: 10810 W. LITTLE YORK RD., #130 HOUSTON TX 77041-4051

TWR Lighting, Inc. HARK[®]

Enlightened Technology[®]

AA4/7-MB CONTROLLER

RETURN MERCHANDISE AUTHORIZATION (RMA) FORM

RMA#: _____ **DATE:** _____

CUSTOMER: _____

CONTACT: _____ **PHONE NO.:** _____

ITEM DESCRIPTION (PART NO.): _____

MODEL NO.: _____ **SERIAL NO.:** _____

ORIGINAL TWR INVOICE NO.: _____ **DATED:** _____

DESCRIPTION OF PROBLEM: _____

SIGNED: _____ **DATE NEEDED:** _____

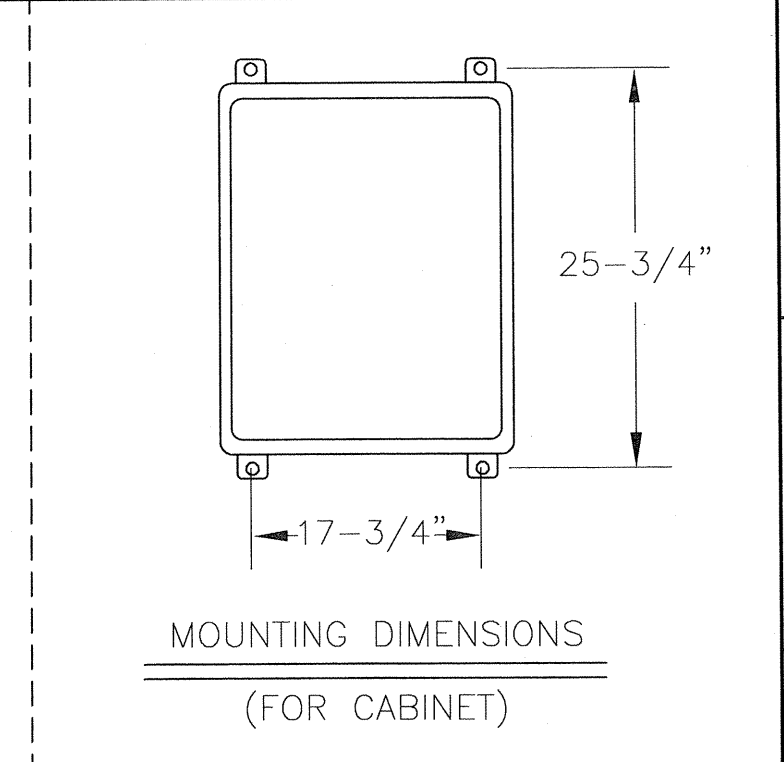
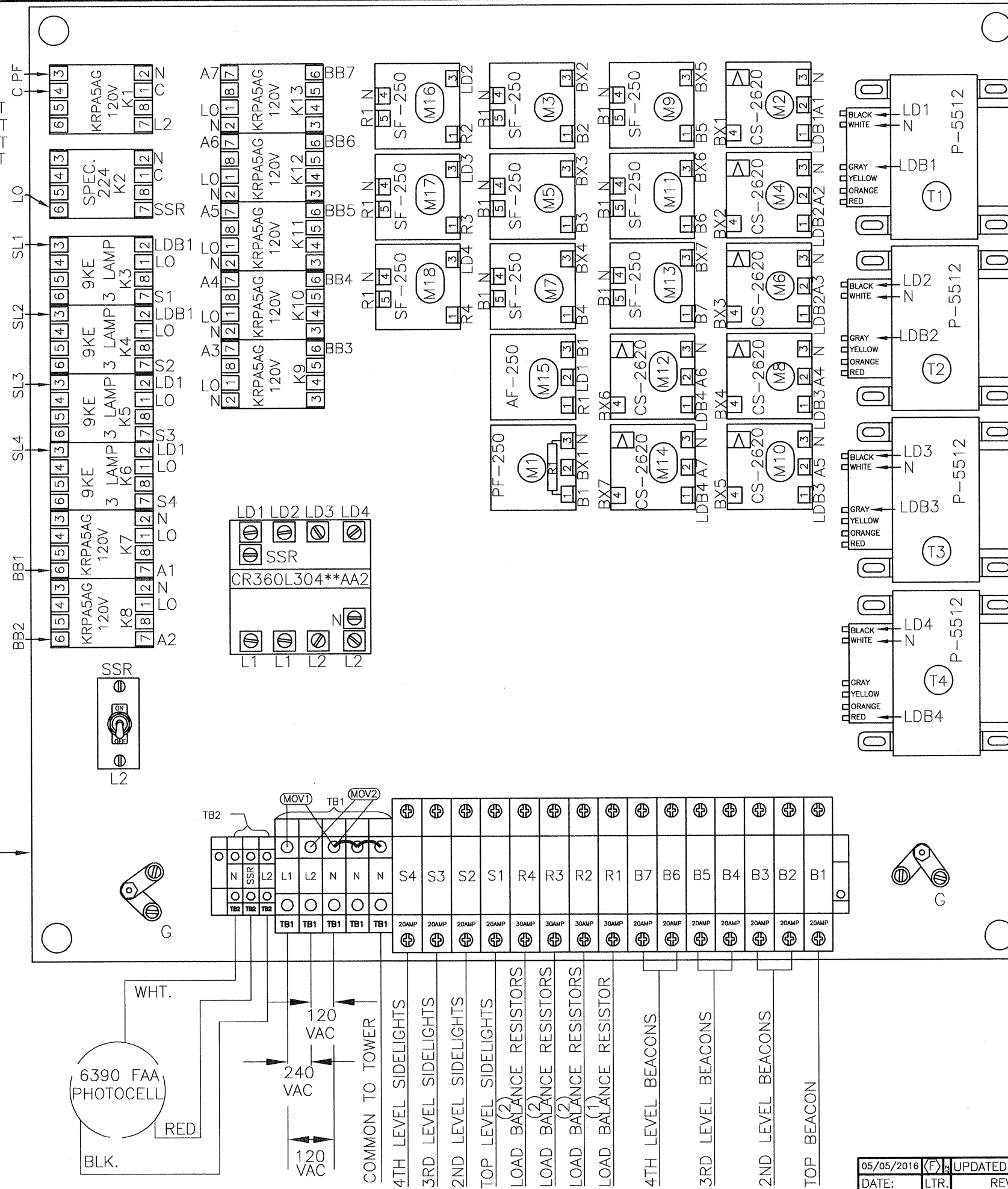
RETURN ADDRESS: _____

PLEASE RETURN PRODUCT TO: 10810 W. LITTLE YORK RD., #130 HOUSTON TX 77041-4051

CUSTOMER ALARM POINTS

- C = ALARM COMMON
- PF = POWER FAILURE
- LO = LIGHTS "ON"
- SL1 = SIDELIGHTS TOP LEVEL BURNOUT
- SL2 = SIDELIGHTS 2ND LEVEL BURNOUT
- SL3 = SIDELIGHTS 3RD LEVEL BURNOUT
- SL4 = SIDELIGHTS 4TH LEVEL BURNOUT
- BB1 = TOP BEACON BURNOUT
- BB2 = 2ND BEACON BURNOUT
- BB3 = 3RD BEACON BURNOUT
- BB4 = 4TH BEACON BURNOUT
- BB5 = 5TH BEACON BURNOUT
- BB6 = 6TH BEACON BURNOUT
- BB7 = 7TH BEACON BURNOUT

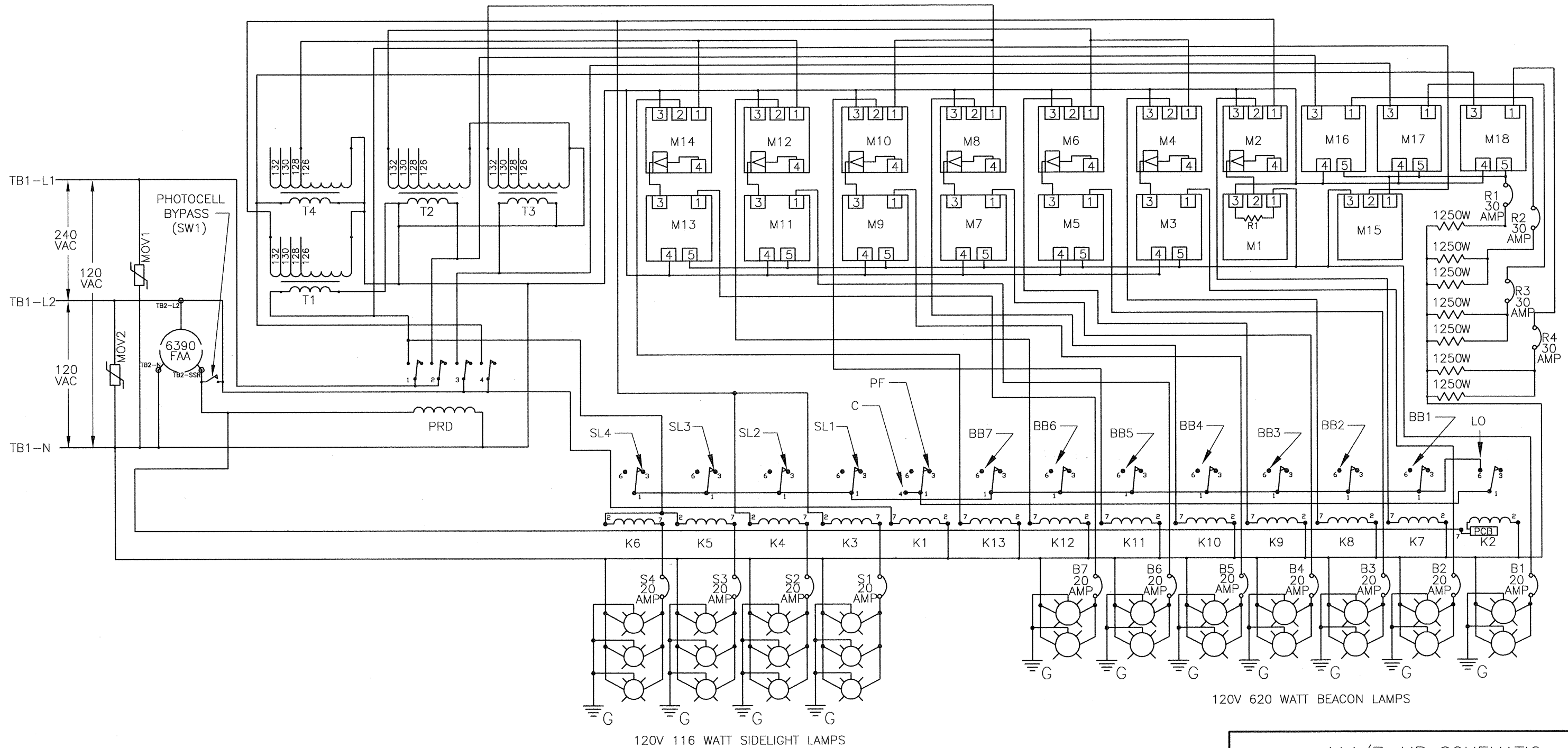
* ALARM OUTPUTS ARE NORMALLY OPEN AND CLOSED UPON FAILURE.



NOTES:

1. WHEN REPLACING MODULES USE HEAT SINK COMPOUND BETWEEN MODULE AND ALUMINUM PLATE.
2. PLUG 6390 FAA PHOTOCCELL INTO 43109 TWIST LOCK RECEPTACLE AND TWIST TO LOCK.
3. WIRES ARE CONNECTED LETTER TO LETTER. (EXAMPLE) L1 TO L1 TO L1.

AA4/7-MB CONTROLLER			
(CHASSIS LAYOUT)			
PROD. DEPT.	TWR Lighting, Inc. <i>Enlightened Technology</i>		
SERV. DEPT.			
ENGINEER			
DRAWN BY	J.L. BUSTAMANTE	SHEET SIZE	SHEET QTY.
DATE	03/08/2007	SCALE	1 OF 1
DWG. NO.	N.T.S.	1130-R	
The use of non-OEM parts or modifications to original equipment design will void the manufacturer warranty and could invalidate the assurance of complying with FAA requirements as published in Advisory Circular 150/5345-43.			
NOTICE: The drawings and photographic images contained herein are the sole property of TWR Lighting, Inc. All information contained herein that is not generally known shall be considered confidential except to the extent the information has been previously established. The drawings and photographic images contained herein may not be reproduced, copied or used as the basis for manufacture or sale or promotion or any other purpose without the expressed written permission of TWR Lighting, Inc.			
DATE:	LTR.	REVISION	



AA4/7-MB SCHEMATIC

PROD. DEPT.
SERV. DEPT.
ENGINEER

TWR Lighting, Inc.
Enlightened Technology®

DRAWN BY: J.L. BUSTAMANTE
DATE: 03/08/2007
SCALE: N.T.S.
SHEET SIZE: B
SHEET QTY.: 1 OF 1
DWG. NO.: 1130-S

05/05/2016	(D)	ADDED GROUND
DATE:	LTR.	REVISION

The use of non-OEM parts or modifications to original equipment design will void the manufacturer warranty and could invalidate the assurance of complying with FAA requirements as published in Advisory Circular 150/5345-43.
NOTICE: The drawings and photographic images contained herein are the sole property of TWR Lighting, Inc. All information contained herein that is not generally known shall be considered confidential except to the extent the information has been previously established. The drawings and photographic images contained herein may not be reproduced, copied or used as the basis for manufacture or sale or promotion or any other purpose without the expressed written permission of TWR Lighting, Inc.

4

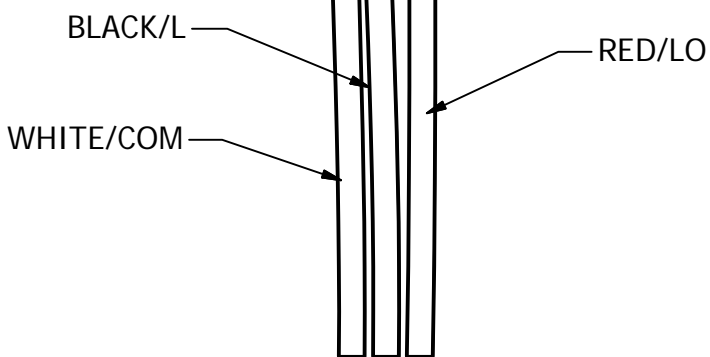
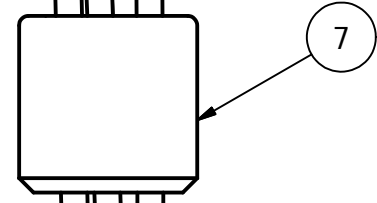
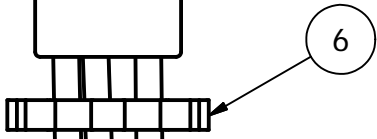
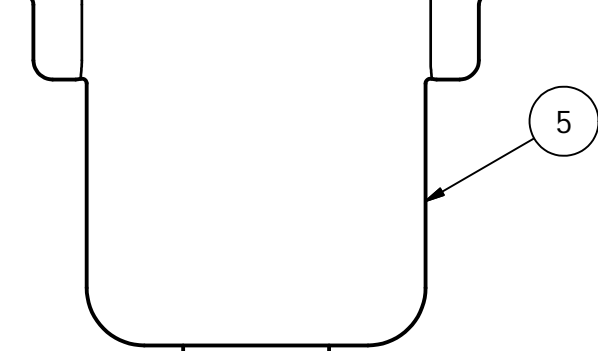
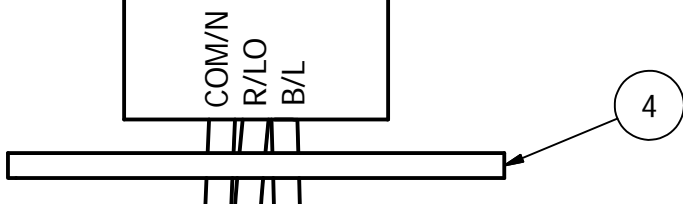
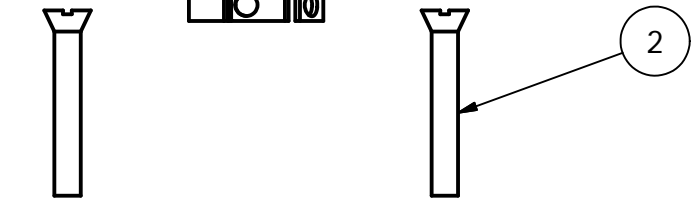
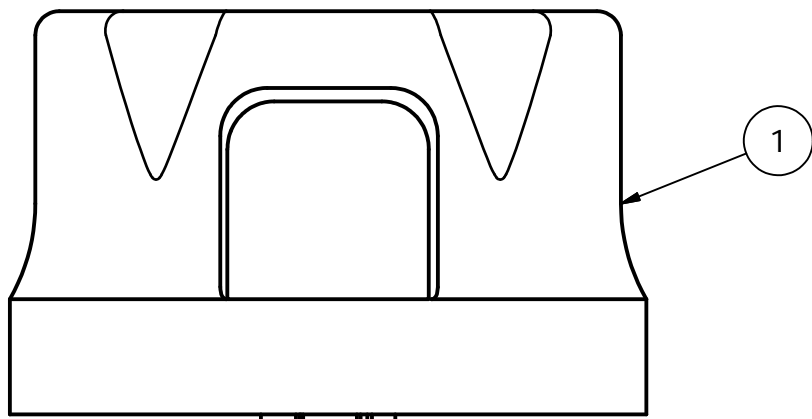
3

2

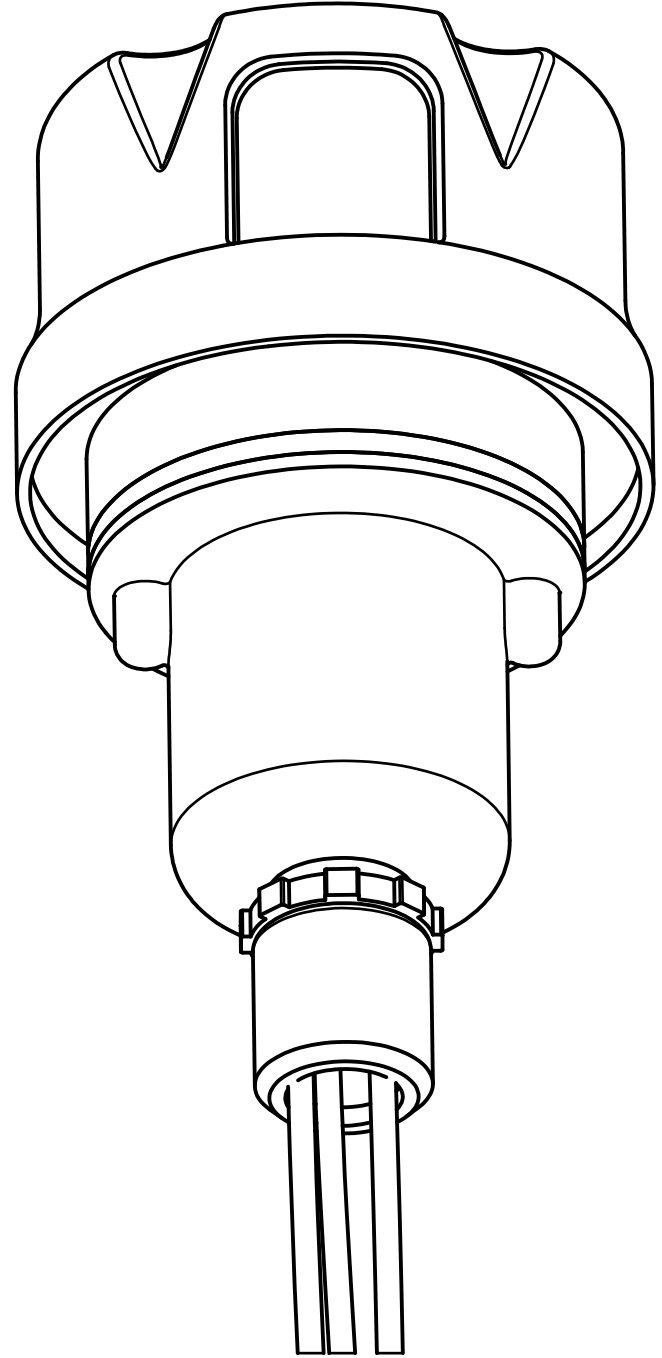
1

PARTS LIST

ITEM	QTY	PART NUMBER
1	1	PHOTOCELL
2	2	6-32 x 1" SCREW
3	1	RECEPTACLE SOCKET
4	1	RECEPTACLE GASKET
5	1	RECEPTACLE HOUSING
6	1	1/2" CONDUIT LOCKNUT
7	1	3/4" TO 1/2" REDUCER



EXPLODED VIEW



ASSEMBLY

NOTES:

- ITEM #7 CAN BE USED TO REDUCE 3/4" CONDUIT TO 1/2" CONDUIT AT THE HOUSING OR AT THE CONTROLLER ITSELF.
- IF ADDITIONAL WIRE IS REQUIRED OVER THE FACTORY 20', USE THE FOLLOWING CHART.
21' TO 300' - 16 AWG TFFN
301' TO 500' - 14 AWG TFFN
- WIRE CONNECTIONS ARE TO BE TINNED AT ITEM 3.

DATE	REV	AUTHOR	DESCRIPTION
11/7/2014	G	JZAMORANO	UPDATED BOM

DRAWN vhernandez	10/18/1995	<p>TWR Lighting, Inc. MARK Enlightened Technology®</p>
CHECKED		
QA		
MFG		
APPROVED		
SIZE B	DWG NO 100239i	REV G
SCALE 1/1	SHEET 1 OF 1	

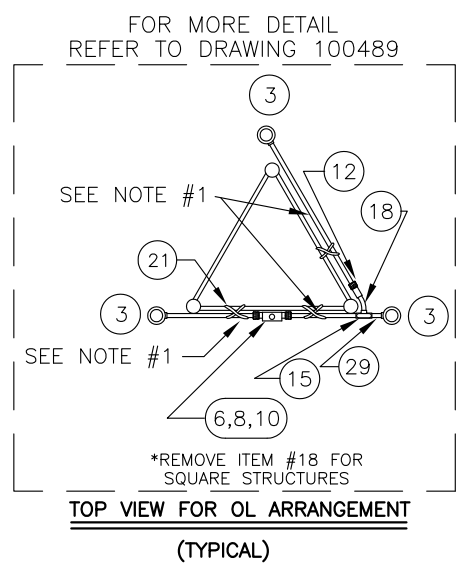
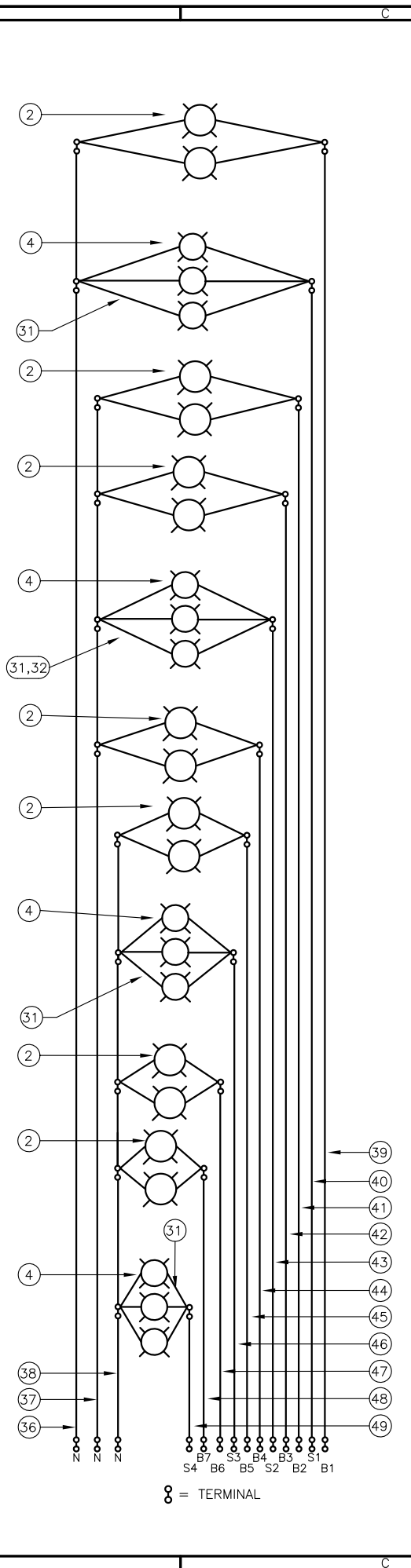
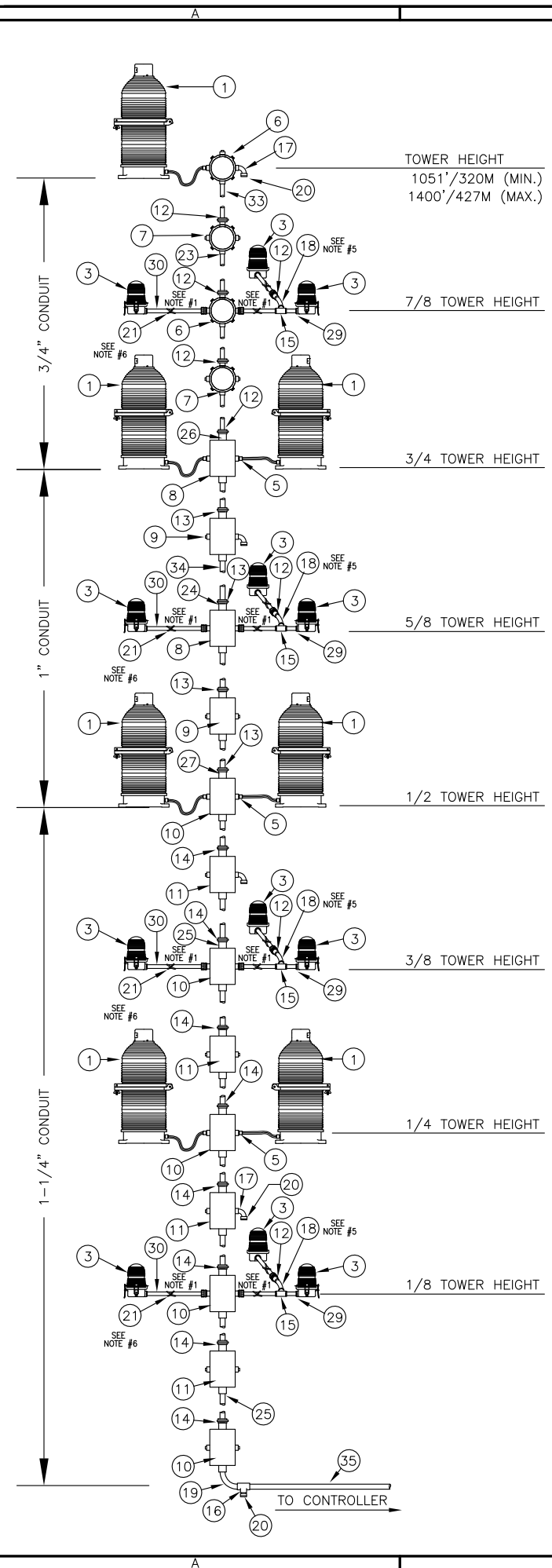
TITLE PHOTOCELL HOUSING DETAIL		
SIZE B	DWG NO 100239i	REV G
SCALE 1/1	SHEET 1 OF 1	

4

3

2

1



- NOTES:
- 1) ITEM #30 CUT TO LENGTH FOR PROPER EXTENSION OF OL1 (6"-12") FROM STRUCTURE. ATTACH ITEM #12 TO UNTHREADED CONDUIT TO COMPLETE ASSEMBLY.
 - 2) CONDUIT SIZE BASED ON USING TYPE THHN WIRE.
 - 3) USE RIGID GALVANIZED STEEL CONDUIT.
 - 4) BREATHERS ALLOW FOR CIRCULATION OF AIR TO PREVENT CONDENSATION.
 - 5) USE COUPLING THAT IS PROVIDED WITH ITEM #30 TO ATTACH ITEM#12 TO ITEM #18.
 - 6) STAINLESS STEEL WRAPLOCK TO BE ATTACH TO OL CONDUIT EVERYWHERE IT MEETS STRUCTURE.

BILL OF MATERIALS			
ITEM NO.	QTY.	TWR PART NO.	DESCRIPTION
1	7	BEACON	300 MM BEACON RED
2	14	620PS40P	620 WATT 120 VOLT LAMP
3	12	OL1	3/4" OBSTRUCTION LIGHT
4	12	116A21TS	116 WATT 120 VOLT LAMP
5	7	CGB295SA	3/4" CORD CONNECTOR
6	2	JB5	3/4" JUNCTION BOX
7	2	JB0	3/4" STRAIN RELIEF BOX
8	2	JB8	1" JUNCTION BOX
9	2	JB8SR	1" STRAIN RELIEF BOX
10	5	JB81142T	1-1/4" JUNCTION BOX(W/ TWO TERMINALS)
11	4	JB8SR114	1-1/4" STRAIN RELIEF BOX
12	12	HC402	3/4" THREADLESS CONNECTOR
13	5	UNY305	1" UNION
14	9	UNY405	1-1/4" UNION
15	4	T27CG	3/4" CONDULET W/COVER AND GASKET
16	2	T47CG	1-1/4" CONDULET W/COVER AND GASKET
17	5	EL3490	3/4" 90° SHORT ELBOW
18	4	EL3430	3/4" 30° ELBOW
19	2	EL11490	1-1/4" 90° ELBOW
20	5	5012902	3/4" BREATHER
21	4	SS10012	WRAPLOCK
22	4	PIPDOP	4 oz. PIPE DOPE
23	12	A314	3/4" CONDUIT LOCKNUTS
24	9	A315	1" CONDUIT LOCKNUTS
25	21	A316	1-1/4" CONDUIT LOCKNUTS
26	2	RE32	1" TO 3/4" REDUCER
27	2	RE43	1-1/4" TO 1" REDUCER
28	2	RE42	1-1/4" TO 3/4" REDUCER
29	4	N34T3	3/4" x 3" NIPPLE
30	120	CONDUIT34	3/4" CONDUIT (FOR OLS)
31	12	SLPIGTAIL25	25' SIDELIGHT PIGTAIL
32	1	AA4/7 B	AA4/7 B CONTROLLER W/BOOST

ITEM NUMBERS #33-#49 ARE NOT INCLUDED IN THE KIT BUT ARE AVAILABLE UPON REQUEST, AND REQUIRED FOR INSTALLATION.

33	-	CONDUIT34	3/4" CONDUIT (1/4 TOWER HT.)
34	-	CONDUIT1	1" CONDUIT (1/4 TOWER HT. + 20')
35	-	CONDUIT114	1-1/4" CONDUIT (1/2 TOWER HT. + 30'/9M)
36	-	6THHNWHT	#6 THHN WHT. WIRE (TOWER HT.+40'/12M)
37	-	4THHNWHT	#4 THHN WHT. WIRE (3/4 TOWER HT.+40'/12M)
38	-	4THHNWHT	#4 THHN WHT. WIRE (1/2 TOWER HT.+40'/12M)
39	-	6THHNBLK	#6 THHN BLK. WIRE (TOWER HT.+40'/12M)
40	-	12THHNRED	#12 THHN RED WIRE (7/8 TWR HT.+40'/12M)
41	-	8THHNBLUE	#8 THHN BLUE WIRE (3/4 TOWER HT.+40'/12M)
42	-	8THHNBLUE	#8 THHN BLUE WIRE (3/4 TOWER HT.+40'/12M)
43	-	12THHNYLW	#12 THHN YLW. WIRE(5/8 TOWER HT.+40'/12M)
44	-	10THHNBRN	#10 THHN BRN. WIRE(1/2 TOWER HT.+40'/12M)
45	-	10THHNBRN	#10 THHN BRN. WIRE(1/2 TOWER HT.+40'/12M)
46	-	10THHNRANGE	#10 THHN ORG. WIRE (3/8 TWR HT.+40'/12M)
47	-	10THHNBLK	#10 THHN BLK. WIRE (1/4 TWR HT.+40'/12M)
48	-	10THHNBLK	#10 THHN BLK. WIRE (1/4 TWR HT.+40'/12M)
49	-	12THHNPLE	#12 THHN PLE. WIRE (1/8 TWR HT.+40'/12M)

* = ITEMS NOT SHOWN

03/14/07	(D)	ADDED HC402
05/14/96	(C)	UPDATED B.O.M.
9/19/94	(B)	REWORK KIT PARTS
2/25/94	(A)	ADDED MATERIALS
DATE:	LTR.	REVISION

LKA4/7B TOWER LIGHTING KIT W/ BOOST
(TOWERS 1051'/320M TO 1400'/427M)

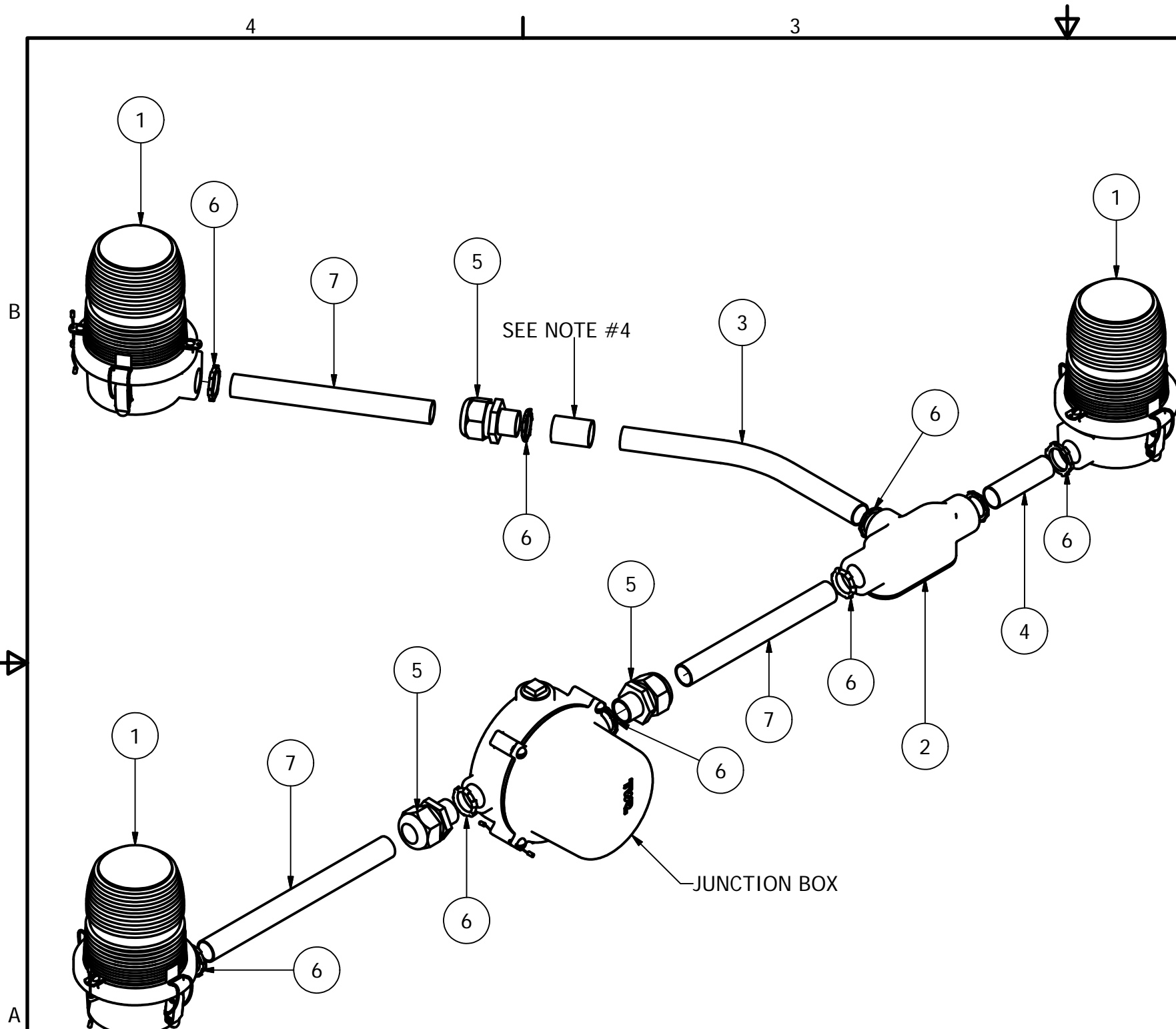
PROD DEPT
SERV DEPT
ENGINEER

TWR Lighting, Inc.
Enlightened Technology®

DRAWN BY: E.A.SALAZAR
DATE: 09/03/93
SCALE: N.T.S.

SHEET SIZE: B
SHEET QTY.: 1 OF 1
DWG. NO.: 263-7B

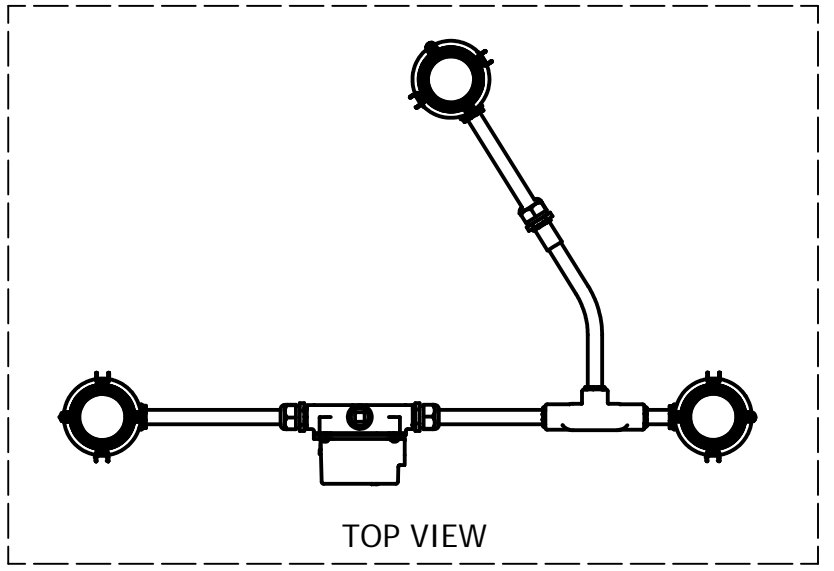
The use of non-OEM parts or modifications to original equipment design will void the manufacturer warranty and could invalidate the assurance of complying with FAA requirements as published in Advisory Circular 150/5345-43.
NOTICE: The drawings and photographic images contained herein are the sole property of TWR Lighting, Inc. All information contained herein that is not generally known shall be considered confidential except to the extent the information has been previously established. The drawings and photographic images contained herein may not be reproduced, copied or used as the basis for manufacture or sale or promotion or any other purpose without the expressed written permission of TWR Lighting, Inc.



ISOMETRIC VIEW

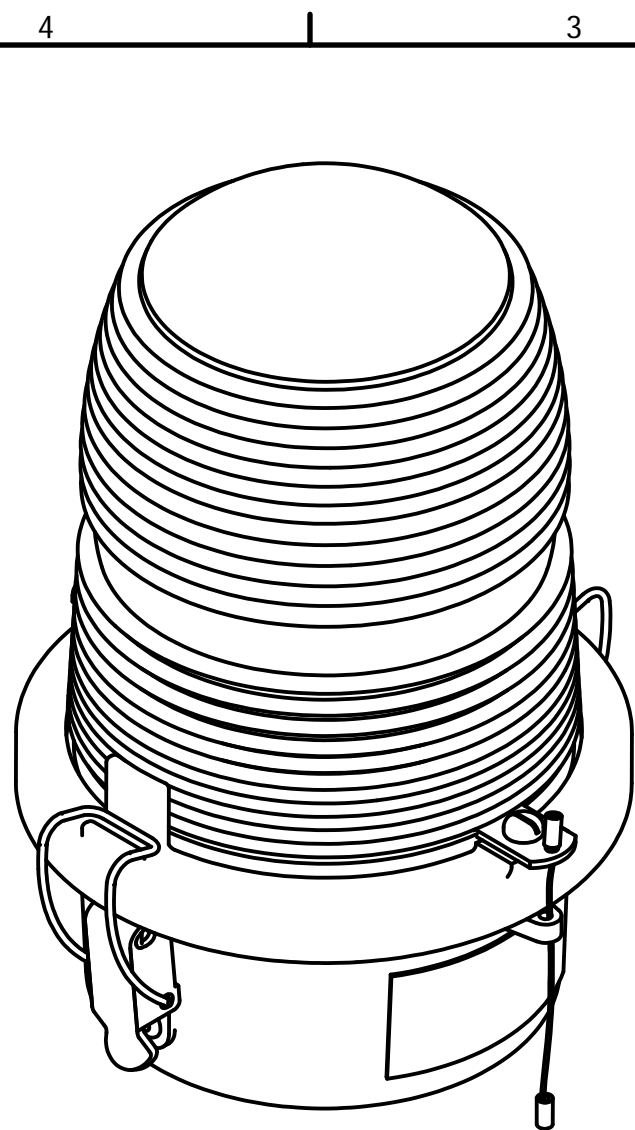
Parts List			
ITEM	QTY	PART NUMBER	DESCRIPTION
1	3	OL1/LED	3/4" OBSTRUCTION LIGHT
2	1	T27CG	3/4" CONDULET W/COVER AND GASKET
3	1	EL3430	3/4" 30° ELBOW
4	1	N34T3	3/4" X 3" NIPPLE
5	3	HC402	3/4" NO THREAD CONNECTOR
6	5	A314	3/4" CONDUIT LOCKNUTS
7	1	CONDUIT34	3/4" CONDUIT

- NOTES:
1. THIS DRAWING IS A TYPICAL INSTALLATION DETAIL FOR 3 OL-1 PER LEVEL SYSTEM.
 2. PART # EL3430 MAY BE OMITTED WHEN ARRANGING FOUR LEG TOWERS.
 3. PART # COUNDUIT34 CUT TO LENGTH FOR PROPER EXTENTION OF OL1 FROM STRUCTURE (6"-12"). ATTACH PART # HC402 TO UNTHREADED CONDUIT TO COMPLETE ASSEMBLY.
 4. USE COUPLING THAT IS PROVIDED BY PART # CONDUIT34.
 5. GREEN WIRE USED ONLY ON LED SIDELIGHTS



DRAWN jbustamante	1/4/2008	TWR Lighting, Inc. <i>Enlightened Technology®</i>		
CHECKED				
QA				
MFG				
APPROVED				
		TITLE SIDELIGHT MOUNT ASSEMBLY (10' FACE WIDTH MAX)		
		SIZE B	DWG NO 100489	REV A
		SCALE	SHEET 1 OF 1	

The use of non-OEM parts or modifications to original equipment design will void the manufacturer warranty and could invalidate the assurance of complying with FAA requirements as published in Advisory Circular 150/5345-43. NOTICE: The drawings and photographic images contained herein are the sole property of TWR Lighting, Inc. All information contained herein that is not generally known shall be considered confidential except to the extent the information has been previously established. The drawings and photographic images contained herein may not be reproduced, copied or used as the basis for manufacture or sale or promotion or any other purpose without the expressed written permission of TWR Lighting, Inc.

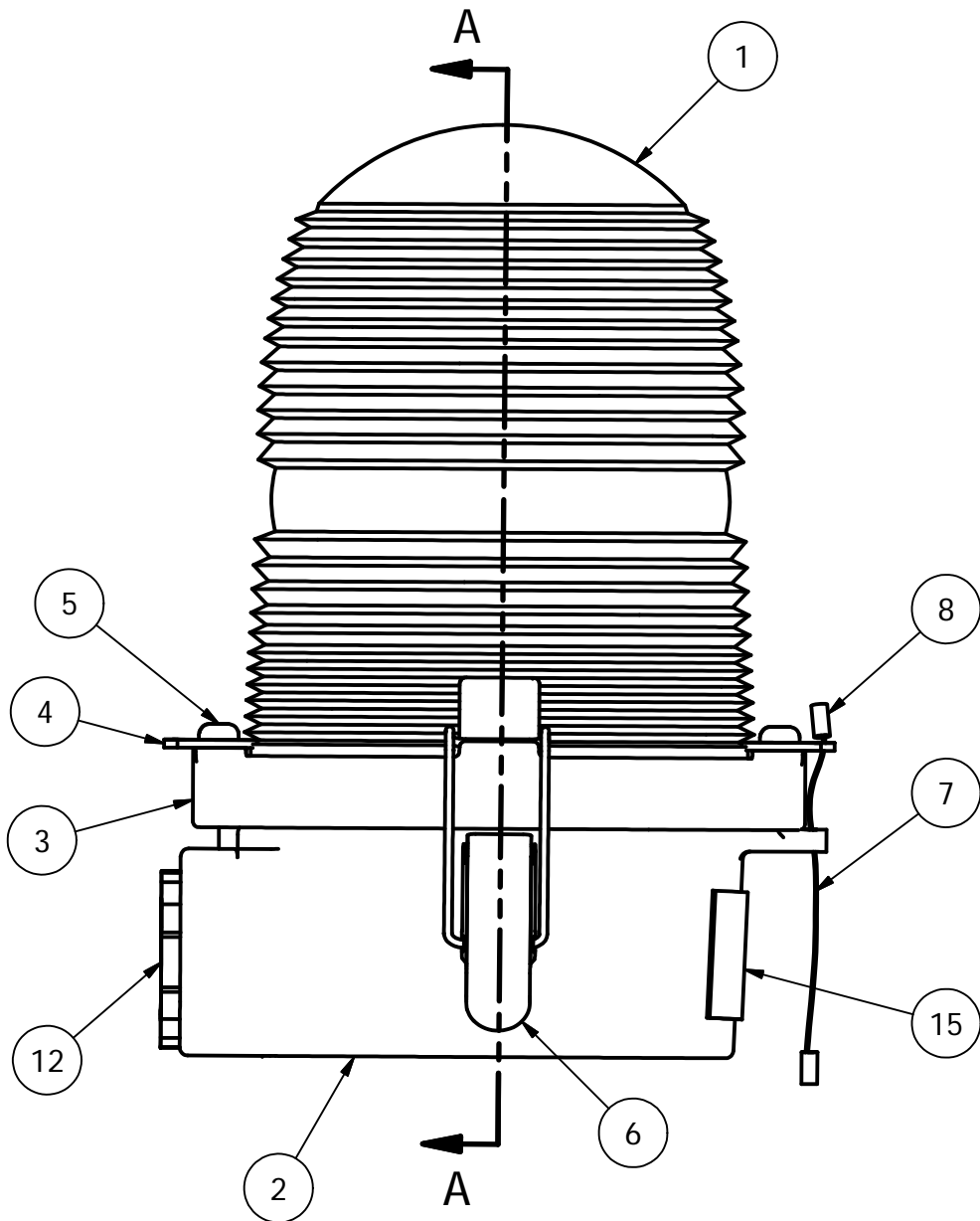


PARTS LIST			
ITEM	QTY	PART NUMBER	DESCRIPTION
1	1	AP35222	RED SIDELIGHT GLASS
2	1	105C	SINGLE SIDELIGHT BODY
3	1	106C	LENS HOLDER RING
4	2	12V245	OL LENS CLIP
5	2	832X14PH	8-32 X 1/4" PH SS SLOT SCREW
6	2	HC255SS	SIDELIGHT LATCH
7	1	7X7SS	1/16 HOL 7X7 S.S. WIRE
8	2	A1A	STAKON CRIMP
9	1	OLG	OL GASKET
10	1	TWR19062	SIDELIGHT RECEPTACLE
11	4	18PRSS	1/8 X .40 SS POP RIVET
12	1	A314	3/4" CONDUIT LOCKNUT GALV.
*	2	104G	WHITE TEFLON WASHER
14	2	832X34PH	8-32 X 3/4" S.S. RH SLOT
15	1	100327	OL1 SERIAL NUMBER LABEL
~	1	116A21TS	116W-120V LAMP (TYP.)

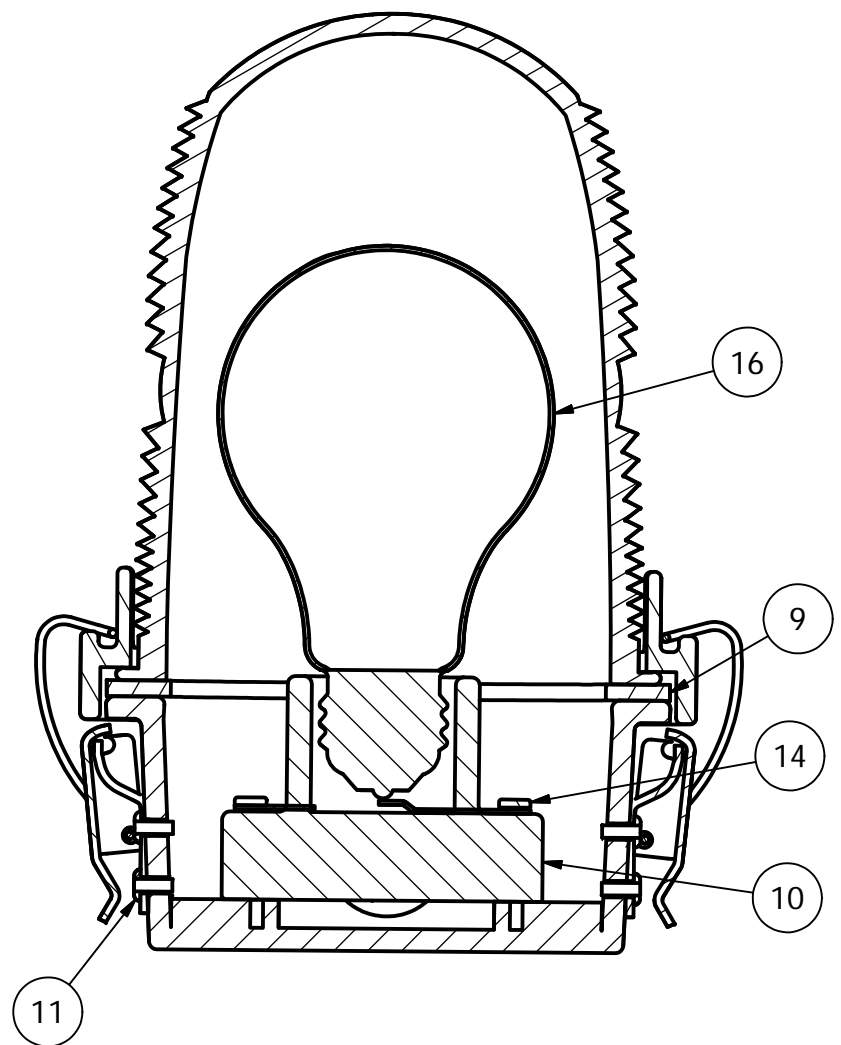
* = PART NOT SHOWN
 ~ = PART SOLD SEPARATELY

NOTE:

1. FAA APPROVED LIGHT USES THE 116A21TS LAMP.
 OTHER LAMPS ARE AVAILABLE TO MEET YOUR APPLICATION.

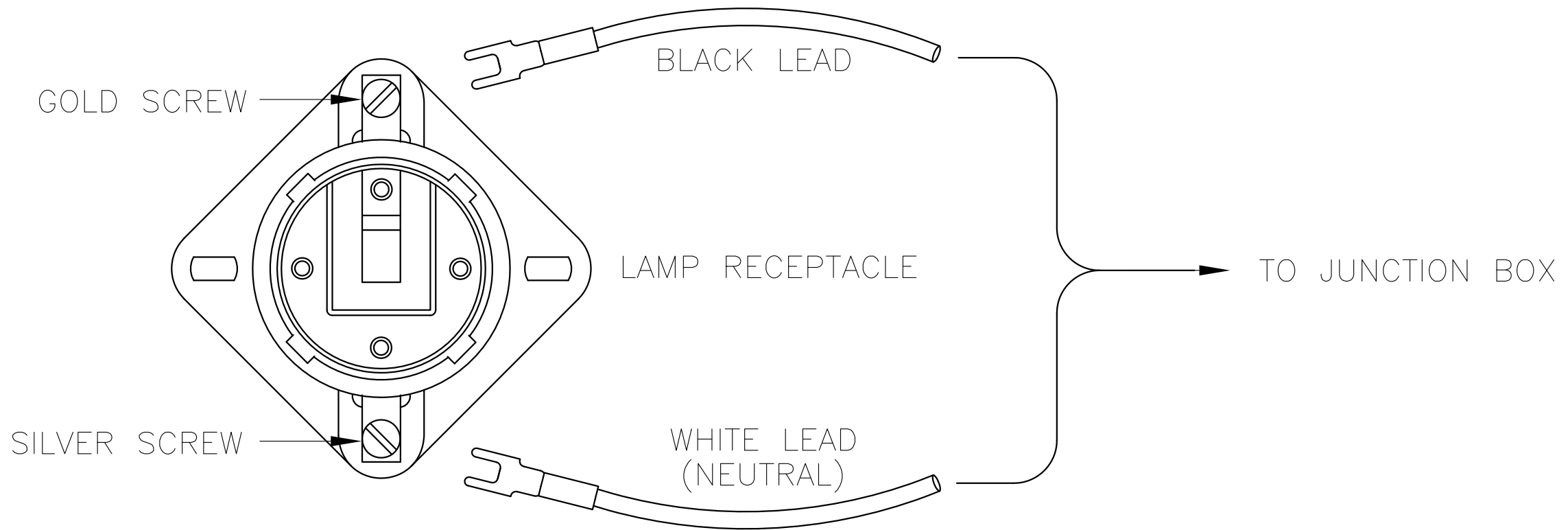


SECTION A-A



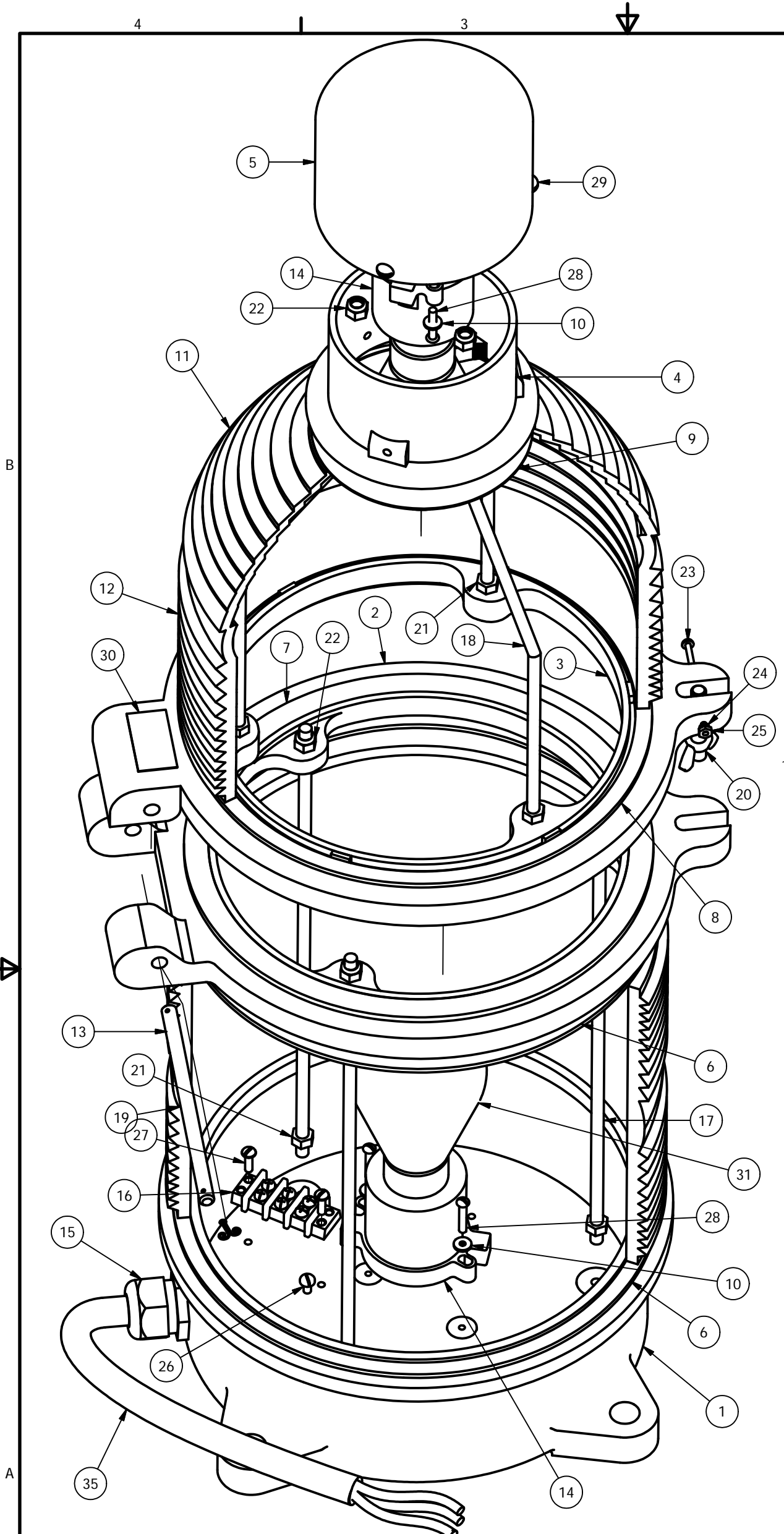
DRAWN	vhernandez	2/13/2012
CHECKED		
QA		
MFG		
APPROVED		

TWR Lighting, Inc. <i>Enlightened Technology</i>		
TITLE		
3/4" OL1 SIDE HUB ASSEMBLY DETAIL (PART#OL1)		
SIZE	DWG NO	REV
B	279-OL	C
SCALE	SHEET 1 OF 1	
2/3		



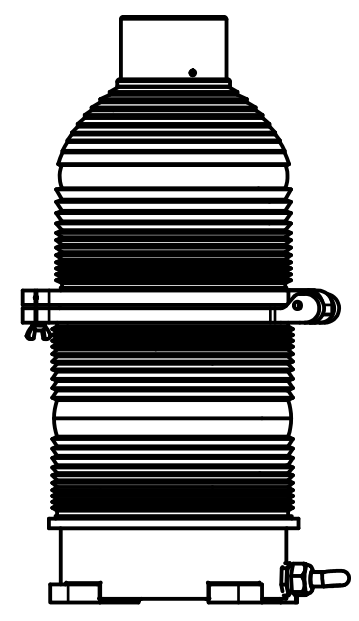
SIDELIGHT RECEPTACLE WIRING			
PROD DEPT	TWR Lighting, Inc. <i>Enlightened Technology</i> WORK		
SERV DEPT			
ENGINEER			
DRAWN BY	G.D. SEBEK	SHEET SIZE	SHEET QTY.
DATE	06/08/91	B	1 OF 1
		SCALE	DWG. NO.
		N.T.S.	274-S
<small>NOTE: The use of non-OEM parts or modifications to original equipment design will void the manufacturer warranty and could invalidate the assurance of complying with FAA requirements as published in Advisory Circular 150/5345-43.</small>			
<small>NOTICE: The drawings and photographic images contained herein are the sole property of TWR Lighting, Inc. All information contained herein that is not generally known shall be considered confidential except to the extent the information has been previously established. The drawings and photographic images contained herein may not be reproduced, copied or used as the basis for manufacture or sale or promotion or any other purpose without the expressed written permission of TWR Lighting, Inc.</small>			

7/2/98	(A)	CHANGED LABEL
DATE:	LTR.	REVISION



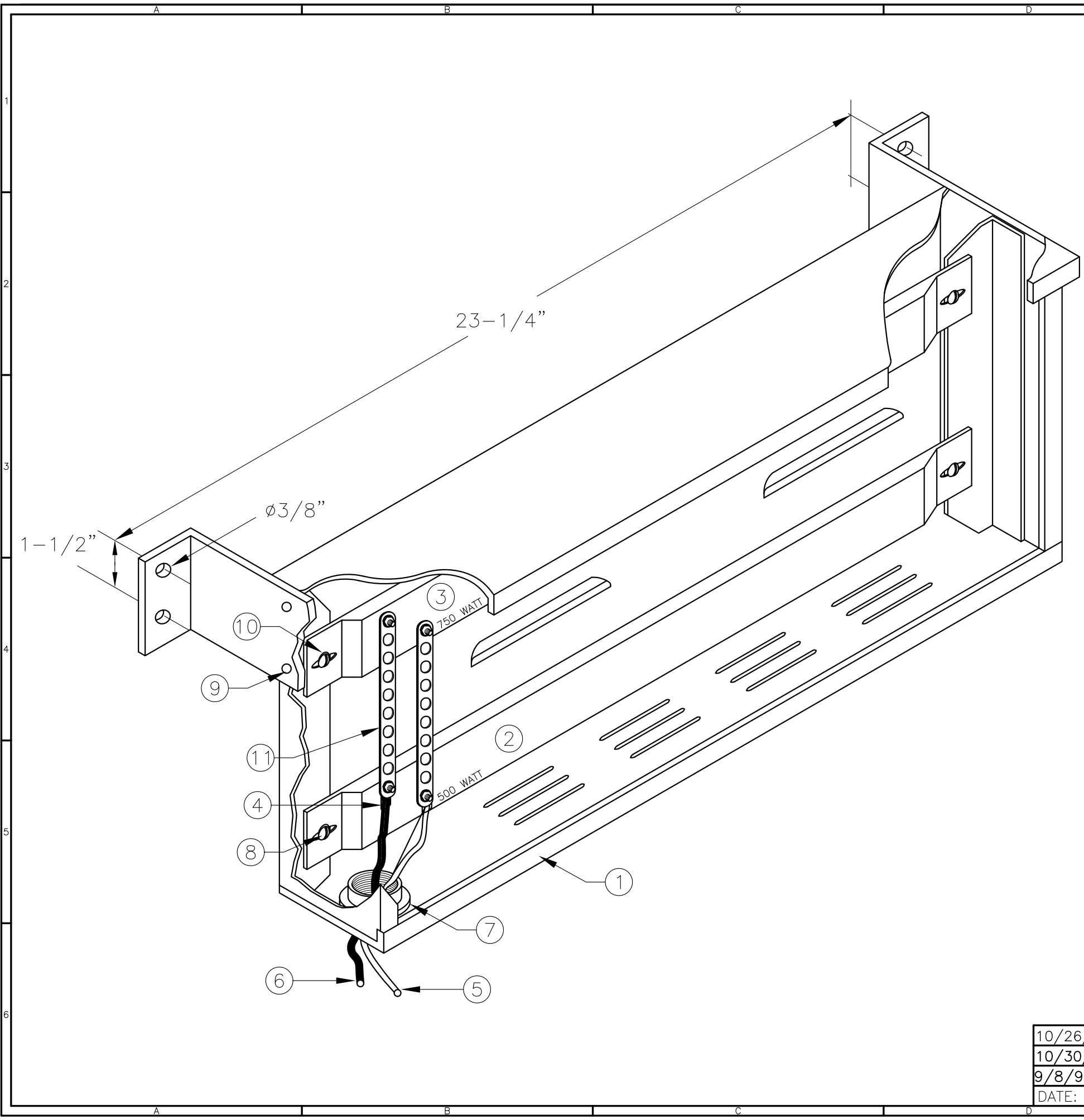
Parts List			
ITEM	QTY	PART NUMBER	DESCRIPTION
1	1	100C	BEACON BASE
2	1	101C	LOWER HINGE
3	1	102C	UPPER HINGE
4	1	103C	CANOPY CAP
5	1	104C	CANOPY FLANGE
6	2	100G	GASKET BEACON BASE
7	1	101G	GASKET MIDDLE BEACON
8	1	102G	GASKET, TOP HINGE
9	1	103G	GASKET TEFLON, TOP
10	4	104G	WHITE TEFLON WASHER
11	1	AP3557	CAP LENS RED
12	1	AP3556	MIDDLE LENS RED
13	2	AP3555	BOTTOM LENS RED
14	2	TWR23-546	BEACON LAMP RECEPTACLE
15	1	CGB295SA	3/4" CORD CONNECTOR .62 TO .75
16	1	TERMBLK3	TERMINAL BLOCK 3-PART
17	3	BTRS-1	BEACON TIE ROD STRAIGHT
18	3	BTRB	BEACON TIE ROD BENT
19	1	BHP	BEACON HINGE PIN W/ COTTER PIN
20	1	BLP	BEACON LATCH PIN
21	6	516NUT	5/16-15 HEX NUT
22	6	516NUTN	5/16-18 NUT W/NYLON INSERT
23	1	632X2RH	6-32 X 2 SS RH SLOT SCREW
24	1	632LW	6-32 LOCK WASHER
25	1	632NUT	6-32 NUT HEX
26	1	1032x38BH	10-32 X 3/8 PILLIPS PAN HEAD
27	2	1032x58PH	10-32 X 5/8 PH SLOT SCREW
28	4	1032X1RH	10-32 X 1 SS RH SCREW
29	3	1420X58RH	14-20 X 5/8 RH SLOT SCREW
30	1	100328	BEACON SERIAL NUMBER LABEL
31	2	---	BEACON LAMP
*	32	7	TYZ23M HI TEMP TY WRAPS T&B TEFZEL
*	33	4'	16HTWH #16 HI-TEMP WIRE SRML WHITE
*	34	4'	16HTBL #16 HI-TEMP WIRE SRML BLACK
35	5'	CSO14/3	S.O. CORD 14AWG/3 CONDUCTOR
*	36	11	YAV14-H34F (STAKON) BURNDY HEAVY DUTY

* = ITEMS NOT SHOWN
 ~ = PART SOLD SEPARATELY



DRAWN J.L.BUSTAMANTE	11/27/07	TWR Lighting, Inc. <i>Enlightened Technology®</i> 300 MM BEACON ASSEMBLY DETAIL		
CHECKED				
QA				
MFG				
APPROVED				
		SIZE B	DWG NO 275-B	REV E
		SCALE	SHEET 1 OF 1	

The use of non-OEM parts or modifications to original equipment design will void the manufacturer warranty and could invalidate the assurance of complying with FAA requirements as published in Advisory Circular 150/5345-43. NOTICE: The drawings and photographic images contained herein are the sole property of TWR Lighting, Inc. All information contained herein that is not generally known shall be considered confidential except to the extent the information has been previously established. The drawings and photographic images contained herein may not be reproduced, copied or used as the basis for manufacture or sale or promotion or any other purpose without the expressed written permission of TWR Lighting, Inc.



ITEM NO	QTY.	TWR PART NUMBER	DESCRIPTION
1	1	LBRBX	RESISTOR BOX GALVANIZED
2	1	LBR500	LBR HEATING ELEMENT
3	1	LBR750	LBR HEATING ELEMENT
4	2	YAV14-H56F	(STAKON) BURNDY HEAVY DUTY
5	20'	16HTWH	#16 HI-TEMP. APPL. WIRE SRML-1
6	20'	16HTBL	#16 HI-TEMP. APPL. WIRE
7	1	ST2	3/4" MEYERS HUB
8	4	832X12RH	8-32 x 1/2" RH, S.S. SCREW
9	8	832X14PH	8-32 x 1/4" PH S.S. SLOT
10	4	104G	WHITE TEFLON WASHER 5K MIN.
11	2	BUSSBAR	BUSS BAR, BRASS, CA-1003(LBR)

NOTES:

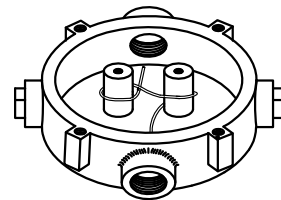
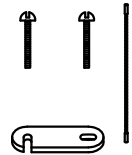
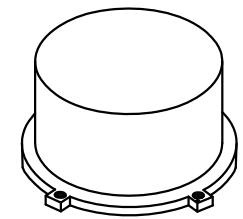
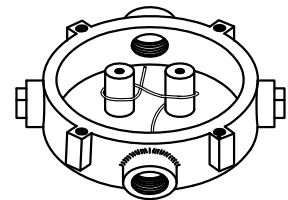
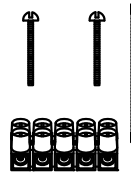
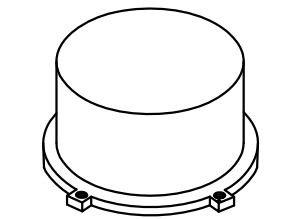
1. ALLOW A MINIMUM OF 6" CLEARANCE FOR TOP AND BOTTOM OF HOUSING.
2. MOUNTING BRACKETS CAN BE RELOCATED 90° FOR OVERHEAD MOUNT.
3. RUN WIRE IN 3/4" CONDUIT TO CONTROLLER.
4. 20' OF HIGH TEMPERATURE WIRE IS PROVIDED WITH LOAD BALANCE RESISTOR.

LBR

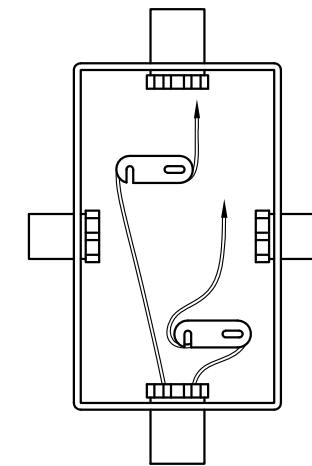
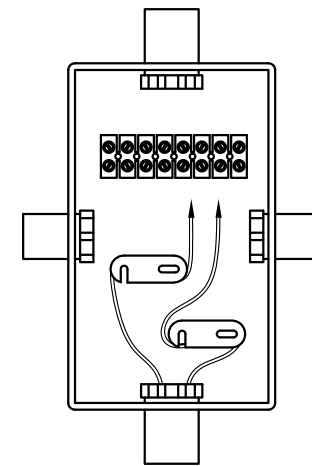
LOAD BALANCE RESISTOR ASSEMBLY DETAIL (PART #LBR)				
PROD DEPT	TWR Lighting, Inc. <i>Enlightened Technology®</i>		SHEET SIZE	SHEET QTY.
SERV DEPT			B	1 OF 1
ENGINEER			DWG. NO.	276-R
DRAWN BY	E.A.SALAZAR	SCALE	N.T.S.	
DATE	10/26/98	SCALE	N.T.S.	
DATE	10/30/96	SCALE	N.T.S.	
DATE	9/8/94	SCALE	N.T.S.	
DATE:	LTR.	REVISION		

10/26/98	(C)	CHG. B.O.M.
10/30/96	(B)	UPDATED DRAWING
9/8/94	(A)	DELETED NOTE
DATE:	LTR.	REVISION

The use of non-OEM parts or modifications to original equipment design will void the manufacturer warranty and could invalidate the assurance of complying with FAA requirements as published in Advisory Circular 150/5345-43.
NOTICE: The drawings and photographic images contained herein are the sole property of TWR Lighting, Inc. All information contained herein that is not generally known shall be considered confidential except to the extent the information has been previously established. The drawings and photographic images contained herein may not be reproduced, copied or used as the basis for manufacture or sale or promotion or any other purpose without the expressed written permission of TWR Lighting, Inc.



JB-5 AND JB-0
3/4" JUNCTION BOX



JB-8 AND JB-8SR
1" JUNCTION BOX

NOTES:

- 1) DRAWING ILLUSTRATES METHOD OF STRAIN RELIEVING WIRE. USE THIS METHOD ON ALL JUNCTION BOXES.
- 2) THE NATIONAL ELECTRICAL CODE-ARTICLE 300-19-B3 REQUIRES CONDUCTORS IN A VERTICAL CONDUIT BE SUPPORTED TO RELIEVE STRAIN ON TERMINAL BLOCK CONNECTIONS.
- 3) SKETCH ILLUSTRATES METHOD OF STRAIN RELIEVING A SINGLE CONDUCTOR. SEVERAL CONDUCTORS MAY BE GROUPED TOGETHER.
- 4) CONDUCTORS MAY BE MIXED BUT SHOULD NOT TAKE UP MORE THAN 40% OF CONDUIT'S INSIDE AREA.

USING THIS JUNCTION BOX METHOD SPACING IS 100 FEET MAXIMUM.

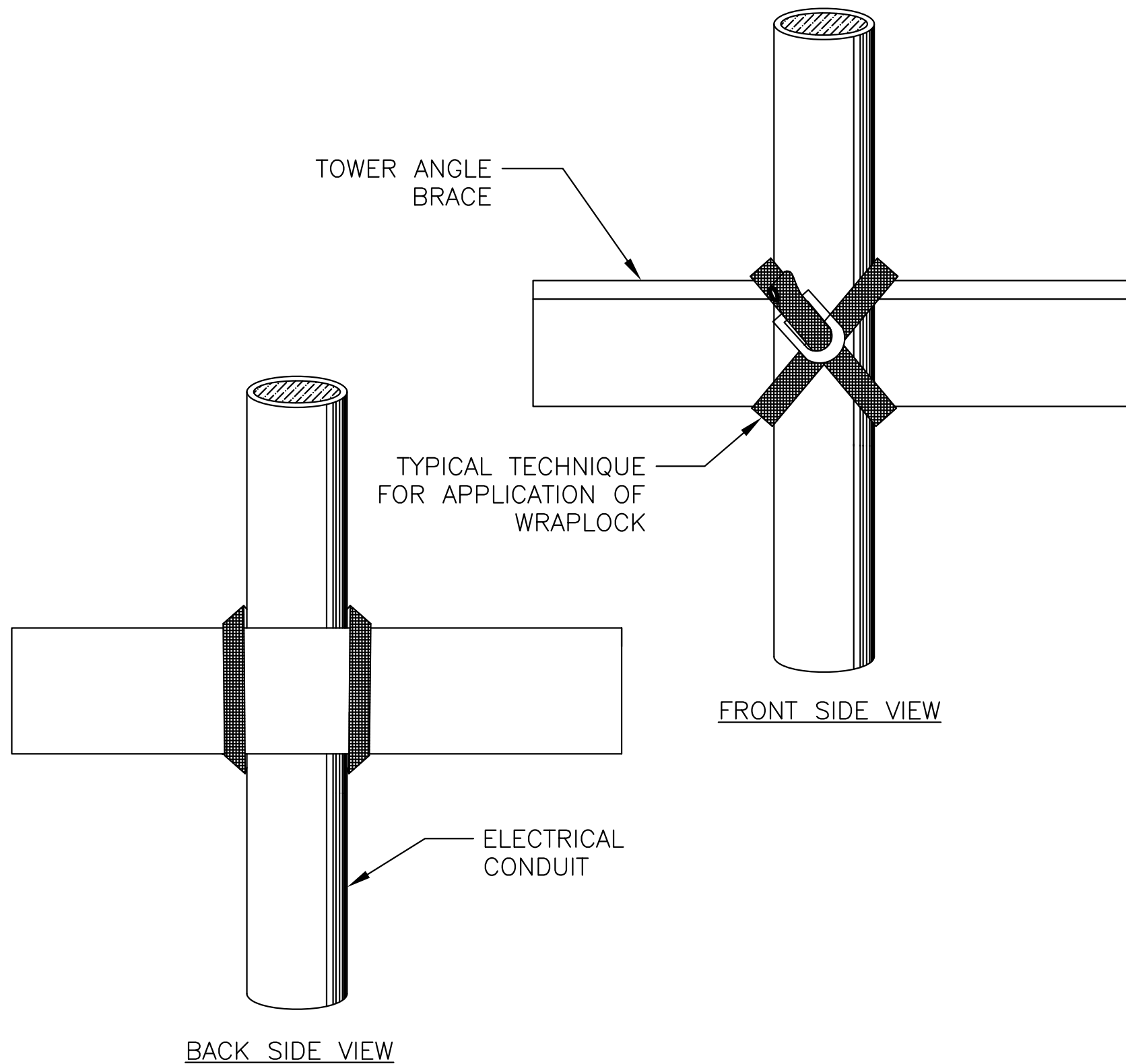
AWG WIRE SIZE	MAX. NUMBER WIRES IN 3/4" CONDUIT	MAX. NUMBER WIRES IN 1" CONDUIT	WIRE AREA SQ. INCHES	WEIGHT PER 100 FEET
12 THHN	16	26	0.0117	2.50
10 THHN	10	17	0.0184	4.10
8 THHN	6	9	0.0373	6.70
6 THHN	4	7	0.0519	10.30
4 THHN	2	4	0.0845	16.20

JUNCTION AND STRAIN RELIEF BOXES

PROD DEPT	TWR Lighting, Inc. <i>Enlightened Technology®</i>	
SERV DEPT		
ENGINEER		
DRAWN BY G.D. SEBEK	SHEET SIZE B	SHEET QTY. 1 OF 1
DATE 07/26/93	SCALE N.T.S.	DWG. NO. 100089

9/29/00	(A)	UPDATED NOTES
DATE:	LTR.	REVISION

The use of non-OEM parts or modifications to original equipment design will void the manufacturer warranty and could invalidate the assurance of complying with FAA requirements as published in Advisory Circular 150/5345-43.
NOTICE: The drawings and photographic images contained herein are the sole property of TWR Lighting, Inc. All information contained herein that is not generally known shall be considered confidential except to the extent the information has been previously established. The drawings and photographic images contained herein may not be reproduced, copied or used as the basis for manufacture or sale or promotion or any other purpose without the expressed written permission of TWR Lighting, Inc.



**DIRECTIONS FOR USING
WrapLock**
CUT OFF BAND TO PROPER LENGTH.
(SEE TABLE ON COVER OF BOX)

- 1.— PASS ONE END THROUGH YOKE AND BEND BACK ABOUT 1 1/2" AND FLATTEN DOWN.
- 2.— PASS BAND AROUND WORK AND THROUGH YOKE.
- 3.— REPEAT AND PASS END THROUGH A SECOND TIME, DRAW UP FREE END SNUGLY WITH PLIERS.



TO REMOVE WrapLock
UNCOIL END WITH RATCHET. PRESS DOWN AT POINT WHERE BAND METAL HAS BEEN FORCED THROUGH CURVED PART OF YOKE.

WRAPLOCK FASTENING DETAIL

ENGINEER	TWR Lighting, Inc. <i>Enlightened Technology®</i>		
APPROVED			
APPROVED			
APPROVED	DRAWN BY M. PETERMAN	SHEET SIZE B	SHEET QTY. 1 OF 1
APPROVED	DATE 05/01/2014	SCALE N.T.S.	DWG. NO. 100984

The use of non-OEM parts or modifications to original equipment design will void the manufacturer warranty and could invalidate the assurance of complying with FAA requirements as published in Advisory Circular 150/5345-43.
NOTICE: The drawings and photographic images contained herein are the sole property of TWR Lighting, Inc. All information contained herein that is not generally known shall be considered confidential except to the extent the information has been previously established. The drawings and photographic images contained herein may not be reproduced, copied or used as the basis for manufacture or sale or promotion or any other purpose without the expressed written permission of TWR Lighting, Inc.