

# **TWR Lighting, Inc.** HARK<sup>®</sup>

*Enlightened Technology<sup>®</sup>*

10810 W. LITTLE YORK RD., #130 - HOUSTON TX 77041-4051  
VOICE (713) 973-6905 - FAX (713) 973-9352  
web: [www.twrlighting.com](http://www.twrlighting.com)

## **IMPORTANT!!!**

PLEASE TAKE THE TIME TO FILL OUT THIS FORM COMPLETELY. FILE IT IN A SAFE PLACE. IN THE EVENT YOU EXPERIENCE PROBLEMS WITH OR HAVE QUESTIONS CONCERNING YOUR CONTROLLER, THE FOLLOWING INFORMATION IS NECESSARY TO OBTAIN PROPER SERVICE AND PARTS.

MODEL # AA1-MDF

SERIAL # \_\_\_\_\_

PURCHASE DATE \_\_\_\_\_

PURCHASED FROM \_\_\_\_\_



# **TWR Lighting, Inc.** **HARK**

*Enlightened Technology*

## **AA1-MDF CONTROLLER**

---

### TABLE OF CONTENTS

<b>1.0</b>	<b>GENERAL INFORMATION.....</b>	<b>1</b>
<b>2.0</b>	<b>INSTALLATION INSTRUCTIONS .....</b>	<b>2</b>
2.1	MOUNTING THE CONTROL CABINET.....	2
2.2	EXTERNAL PHOTOCELL WIRING .....	2
2.3	POWER WIRING .....	3
2.4	RED BEACON AND SIDELIGHT WIRING.....	3
<b>3.0</b>	<b>THEORY OF OPERATION .....</b>	<b>4</b>
3.1	POWER SUPPLY .....	4
3.2	SIDELIGHTS .....	4
3.3	BEACON .....	4
<b>4.0</b>	<b>MAINTENANCE GUIDE.....</b>	<b>5</b>
4.1	RED OBSTRUCTION LIGHTING .....	5
4.2	L-864 LAMP REPLACEMENT .....	5
4.3	LAMP REPLACEMENT .....	5
4.4	L-864 CONTROLLER.....	6
4.5	PHOTOCELL.....	6
<b>5.0</b>	<b>MAJOR COMPONENTS PARTS LIST .....</b>	<b>7</b>
<b>6.0</b>	<b>SUGGESTED SPARE PARTS LIST .....</b>	<b>8</b>

**WARRANTY & RETURN POLICY**

**RETURN MERCHANDISE AUTHORIZATION (RMA) FORM**



# **TWR Lighting, Inc.** HARK<sup>®</sup>

*Enlightened Technology<sup>®</sup>*

## **AA1-MDF CONTROLLER**

---

### APPENDIX

CHASSIS COMPONENT LAYOUT .....	213-R (REV E)
SCHEMATIC LAYOUT .....	213-S (REV D)
TROUBLESHOOTING FLOW CHART .....	213-F
PHOTOCELL HOUSING DETAIL.....	100239 (REV H)
TOWER LIGHTING KIT 151' TO 200' .....	260-11 (REV E) 260-13 (REV E)
TOWER LIGHTING KIT 201' TO 350' .....	260-12 (REV E) 260-14 (REV E)
SIDELIGHT MOUNT ASSEMBLY .....	100489 (REV A)
L-810 OL-1 SINGLE OBSTRUCTION LIGHT DETAIL.....	279-OL (REV C)
L-810 OL-1 WIRING DETAIL .....	274 S (REV A)
L-864 FB 300 MM BEACON DETAIL.....	275-B (REV E)
L-864 FB 300 MM WIRING DETAIL .....	273 B
JUNCTION BOX DETAIL .....	100089 (REV A)
WRAPLOCK FASTENING DETAIL.....	100984



# **TWR Lighting, Inc.** HARK<sup>®</sup>

*Enlightened Technology<sup>®</sup>*

## **AA1-MDF CONTROLLER**

---

### **1.0 GENERAL INFORMATION**

The TWR Lighting<sup>®</sup>, Inc. (TWR<sup>®</sup>) Model AA1-MDF Controller is for A1 lighting of towers 151' to 350' AGL (above ground level). One (1) beacon should be placed at the top of the structure. One (1) set of three (3) obstruction lights should be placed at the mid-point with respect to the overall tower height.

The flash rate of the beacon is 30 per minute. The sidelights burn steady.

A by-pass switch (SW1) allows the controller to be turned on during daylight hours without covering the photocell. This is particularly helpful since the controller can be mounted indoors while the photocell is outdoors. SW1 can be operated by turning "on" the toggle switch mounted on the panel of the controller.

The beacon requires two (2) 620 watt or two (2) 700 watt, 120V bulbs. TWR<sup>®</sup> recommends that you use only these bulbs. Do not try to use 130V bulbs. Each sidelight requires one (1) 116 watt, 120V bulb (620PS40P, 700PS40P, and 116A21TS).

The photocell is the three (3) blade, twist to lock, type.

Power supplied to the controller shall be 120V AC, 50/60 Hz.

The controller housing is rated at NEMA 4X. It is suitable for indoor or outdoor mounting.

# **TWR Lighting, Inc.** HARK<sup>®</sup>

*Enlightened Technology<sup>®</sup>*

## **AA1-MDF CONTROLLER**

---

### **2.0 INSTALLATION INSTRUCTIONS**

#### **2.1 MOUNTING THE CONTROL CABINET**

(Refer to Drawing 213-R)

The power supply control cabinet can be located at the base of the structure or in an equipment building. Mounting footprints are shown on drawing 213-R. Power wiring to the control cabinet should be in accordance with local methods and the National Electric Codes (NEC).

**2.1.1** If the control cabinet is mounted inside an equipment building, the photocell should be mounted vertically on ½” conduit outside the building above the eaves facing north. Wiring from the photocell socket to the control cabinet should consist of one (1) each, red, black, and white wires. The white wire is connected to the socket terminal marked “N,” the black wire is connected to the socket terminal marked “Li,” and the red wire is connected to the socket terminal marked “Lo.” As above, the photocell should be positioned so that it does not “see” ambient light, which would prevent it from switching to the nightmode.

**2.1.2** If the control cabinet is mounted outside an equipment building, the photocell should be mounted vertically on ½” conduit so the photocell is above the control cabinet. Care must be taken to assure that the photocell does not “see” any ambient light that would prevent it from switching into the nightmode. The photocell wiring is the same as in 2.1.1.

**2.1.3** The wiring from the photocell, the service breaker, the red incandescent beacon, and the sidelights should enter the control cabinet through the watertight connectors in the bottom of the cabinet. Inside the cabinet, the connections will be made on the terminal strips and circuit breakers located at the bottom of the chassis. These connections are made as follows:



## **AA1-MDF CONTROLLER**

---

### **2.2 EXTERNAL PHOTOCELL WIRING**

(Refer to Drawing 213-R)

**2.2.1** Connect the **BLACK** wire from the photocell to terminal block TB2 marked "L."

**2.2.2** Connect the **RED** wire from the photocell to terminal block TB2 marked "SSR."

**2.2.3** Connect the **WHITE** wire from the photocell to terminal block TB2 marked "N."

### **2.3 POWER WIRING**

(Refer to Drawing 214-R)

**2.3.1** Power wiring to the control cabinet should be in accordance with local methods and the National Electric Codes (NEC).

**2.3.2** Circuit breaker needs to be rated at 20 amps.

**2.3.3** Connect incoming 120V AC line to terminal block TB1 marked "L."

**2.3.4** Connect the neutral wire(s) to one (1) of the terminal blocks on TB1 marked "N."

**2.3.5** Connect the AC ground to the aluminum mounting plate.

# **TWR Lighting, Inc.** HARK®

*Enlightened Technology®*

## **AA1-MDF CONTROLLER**

---

### **2.4 RED BEACON and SIDELIGHT WIRING**

(Refer to Drawings 213-R, and 260-11 through 260-14)

Install wiring between the controller and the beacon utilizing either strobe cable or conduit method. Refer to drawings 213-R, and 260-11 through 260-14, for installation of light kits. Following these requirements, installing light kits will require lifting of the cable by the supplied cable grip or conduit to affix to the tower. Always work safely and adhere to all OSHA Safety Guidelines when lifting, wiring, or working on the structure or tower itself. It is the installer's responsibility to install the lighting kit in a safe manner. Installers can request from OSHA their requirements 29CFT 1926.21, and 29CFR 1926.105 to ensure compliance to regulations.

**NOTE:** *On occasion, a set of custom lighting kit drawings may be specifically requested by a customer and installed in this manual. In cases such as this, the drawings will precede the manual if a conflict occurs.*

**2.4.1** Connect the **BLACK** wire from the beacon to the circuit breaker marked "B."

**2.4.2** Connect the **RED** wires from the sidelight group to the circuit breaker marked "S."

**2.4.3** Connect the **NEUTRAL** wire(s) to one of the terminal blocks on TB1 marked "N."

# **TWR Lighting, Inc.** HARK<sup>®</sup>

*Enlightened Technology<sup>®</sup>*

## **AA1-MDF CONTROLLER**

---

### **3.0 THEORY OF OPERATION**

#### **3.1 POWER SUPPLY**

120V AC enters the controller from the circuit breaker panel. Line sits at the PRD, waiting to be switched. When the 6390-FAA photocell is activated, line energizes the coil of the PRD. This also can be accomplished by using the photocell by-pass switch (SW1).

#### **3.2 SIDELIGHTS**

Line LD is sent directly to the circuit breaker marked "S."

#### **3.3 BEACON**

Line LDB is sent to the Motor Driven Flasher, which is the primary flasher for the beacon that provides control voltage. The output of the Motor Driven Flasher is sent to the circuit breaker marked "B."

# **TWR Lighting, Inc.** **HARK**

*Enlightened Technology*

## **AA1-MDF CONTROLLER**

---

### **4.0 MAINTENANCE**

#### **4.1 RED OBSTRUCTION LIGHTING**

The only required maintenance needed to be performed is replacement of the lamps in the L-864 and L-810 fixtures. Lamps should be replaced after being operated for not more than 75% of the rated life or immediately upon failure as per Federal Advisory Circular 70/7460-1K. By following these instructions, maximum safety and performance can be achieved.

**TOOLS REQUIRED:** NONE

#### **4.2 L-864 LAMP REPLACEMENT**

**4.2.1** Loosen the one (1) wing nut on the latch pin so that it can recline.

**4.2.2** Open the lens and tilt it back.

**4.2.3** To remove each lamp, depress down while rotating the lamp counter-clockwise 90°.

**4.2.4** Install the new lamps by depressing down while rotating the lamp clockwise 90°.

**4.2.5** Close the lens and let the latch pin drop in the recessed slot.

**4.2.6** Tighten the wing nut snug, then ¼ turn more.

#### **4.3 LAMP REPLACEMENT**

**4.3.1** Unclasp the two (2) latches and let the bail recline back.

**4.3.2** Lift the lens up and over the lamp, letting the lens hang from the safety cable.

**4.3.3** Unscrew the lamp counter-clockwise and remove.

**4.3.4** Install the new lamp by screwing the lamp clockwise.

**4.3.5** Reinstall the lens, making sure it is seated properly on the base.

## **AA1-MDF CONTROLLER**

---

4.3.6 Reclasp the two (2) latches.

### **4.4 L-864 CONTROLLER**

No scheduled maintenance is required. Perform on an “as needed” basis only.

### **4.5 PHOTOCELL**

The photocell is a sealed unit. No maintenance is needed or required other than replacement as necessary.

# **TWR Lighting, Inc.** HARK<sup>®</sup>

*Enlightened Technology<sup>®</sup>*

## **AA1-MDF CONTROLLER**

---

### **5.0 MAJOR COMPONENTS PARTS LIST**

<b>QTY</b>	<b>PART NUMBER</b>	<b>DESCRIPTION</b>
1	6390-FAA (This replaces the 102FAA Photocell)	120 – 240V AC Photocell
1	22-02	Motor Driven Flasher
1	PRD7AGO	Mechanical Load Contactor (PRD)
1	VJ1008HWPL1X004	Enclosure
1	STJ01002	15 amp SPDT Switch (SW1)
1	MOV524V15	Metal Oxide Varistor (MOV)
2	S261D20	20 amp Circuit Breaker (B and S)
2	8WA1808	End Stop
6	8WA1204	Terminal Blocks (TB1, TB2)
1	SSPIGTAIL	20' Pigtail

# **TWR Lighting, Inc.** HARK<sup>®</sup>

*Enlightened Technology<sup>®</sup>*

## **AA1-MDF CONTROLLER**

---

### **6.0 SUGGESTED SPARE PARTS LIST**

<b>QTY</b>	<b>PART NUMBER</b>	<b>DESCRIPTION</b>
1	6390-FAA (This replaces the 102FAA Photocell)	120 – 240V AC Photocell
1	22-02	Motor Driven Flasher
1	PRD7AGO	Load Contactor (PRD)

# **TWR Lighting<sup>®</sup>, Inc.** **HARK<sup>®</sup>**

*Enlightened Technology<sup>®</sup>*

## **AA1-MDF CONTROLLER**

---

### **Warranty & Return Policy**

**TWR Lighting<sup>®</sup>, Inc. (“TWR<sup>®</sup>”) warrants its products (other than “LED Product”)** against defects in design, material (excluding incandescent bulbs) and workmanship for a period ending on the earlier of two (2) years from the date of shipment or one (1) year from the date of installation.

**TWR Lighting<sup>®</sup>, Inc. (“TWR<sup>®</sup>”) warrants its “LED Product”** against defects in design, material and workmanship for a period of five (5) years from the date of shipment. TWR<sup>®</sup>, at its sole option, will, itself, or through others, repair, replace or refund the purchase price paid for “LED Product” that TWR<sup>®</sup> verifies as being inoperable due to original design, material, or workmanship. All warranty replacement “LED Product” is warranted only for the remainder of the original warranty of the “LED Product” replaced. Replacement “LED Product” will be equivalent in function, but not necessarily identical, to the replaced “LED Product.”

**TWR Lighting<sup>®</sup>, Inc. (“TWR<sup>®</sup>”) warrants its “LED Product”** against light degradation for a period of five (5) years from the date of installation. TWR<sup>®</sup>, at its sole option, will, itself, or through others, repair, replace, or refund the purchase price paid for “LED Product” that TWR<sup>®</sup> verifies as failing to meet 75% of the minimum intensity requirements as defined in the FAA Advisory Circular 150/5345-43G dated 09/26/12. All warranty replacement “LED Product” is warranted only for the remainder of the original warranty of the “LED Product” replaced. Replacement “LED Product” will be equivalent in function, but not necessarily identical, to the replaced “LED Product.”

**Replacement parts (other than “LED Product”) are warranted for 90 days from the date of shipment.**

Conditions not covered by this Warranty, or which might void this Warranty are as follows:

- x Improper Installation or Operation
- x Misuse
- x Abuse
- x Unauthorized or Improper Repair or Alteration
- x Accident or Negligence in Use, Storage, Transportation, or Handling
- x Any Acts of God or Nature
- x **Non-OEM Parts**

**The use of Non-OEM parts or modifications to original equipment design will void the manufacturer warranty and could invalidate the assurance of complying with FAA requirements as published in Advisory Circular 150/5345-43.**



# **TWR Lighting, Inc.** HARK®

*Enlightened Technology®*

## **AA1-MDF CONTROLLER**

---

### **Warranty & Return Policy** (continued)

**Field Service** – Labor, Travel, and Tower Climb are not covered under warranty. Customer shall be obligated to pay for all incurred charges. An extensive network of certified and insured Service Representatives is available if requested.

**Repair, Replacement or Product Return RMA Terms** – You must first contact our Customer Service Department at **713-973-6905** to acquire a Return Merchandise Authorization (RMA) number in order to return the product(s). Please have the following information available when requesting an RMA number:

- x The contact name and phone number of the tower owner or
- x The contact name and phone number of the contractor
- x The site name and number
- x The part number(s)
- x The serial number(s) (if any)
- x A description of the problem
- x The billing information
- x The Ship To address

**This RMA number must be clearly visible on the outside of the box.** If the RMA number is not clearly labeled on the outside of the box, your shipment will be refused. Please ensure the material you are returning is packaged carefully. **The warranty is null and void if the product(s) are damaged in the return shipment.**

**All RMAs must be received by TWR LIGHTING®, INC., 10810 W. LITTLE YORK RD. #130, HOUSTON, TX 77041-4051, within 30 days of issuance.**

Upon full compliance with the Return Terms, TWR® will replace, repair and return, or credit product(s) returned by the customer. It is TWR®'s sole discretion to determine the disposition of the returned item(s).

# **TWR Lighting, Inc.** **HARK**<sup>®</sup>

*Enlightened Technology*<sup>®</sup>

## **AA1-MDF CONTROLLER**

---

### **Warranty & Return Policy** (continued)

**RMA Replacements** – Replacement part(s) will be shipped and billed to the customer for product(s) considered as Warranty, pending return of defective product(s). When available, a certified reconditioned part is shipped as warranty replacement with a Return Merchandise Authorization (RMA) number attached. Upon receipt of returned product(s), inspection, testing, and evaluation will be performed to determine the cause of defect. The customer is then notified of the determination of the testing.

- x Product(s) that is deemed defective and/or unrepairable and covered under warranty - a credit will be issued to the customer's account.
- x Product(s) found to have no defect will be subject to a **\$75.00 per hour testing charge (1 hour minimum), which will be invoiced to the customer.** At this time the customer may decide to have the tested part(s) returned and is responsible for the return charges.
- x Product(s) under warranty, which the customer does not wish returned, the customer will be issued a credit against the replacement invoice.

**RMA Repair & Return** – A Return Merchandise Authorization (RMA) will be issued for all part(s) returned to TWR<sup>®</sup> for repair. Upon receipt of returned product(s), inspection, testing, and evaluation will be performed to determine the cause of defect. The customer is then notified of the determination of the testing. If the returned part(s) is deemed unrepairable, or the returned part(s) is found to have no defect, the customer will be subject to a **\$75.00 per hour testing charge (1 hour minimum), which will be invoiced to the customer.** Should the returned parts be determined to be repairable, a written estimated cost of repair will be sent to the customer for their written approval prior to any work being performed. In order to have the tested part(s) repaired and/or returned, the customer must issue a purchase order and is responsible for the return shipping charges.

**RMA Return to Stock** – Any product order that is returned to TWR<sup>®</sup> for part(s) ordered incorrectly or found to be unneeded upon receipt by the customer, the customer may be required to pay a minimum **20% restocking fee.** Product returned for credit must be returned within 60-days of original purchase, be in new and resalable condition, and in original packaging. Once the product is received by TWR it's condition will be evaluated and a credit will be issued only once it is determined that the RMA Return Terms have been met.

**Credits** – Credits are issued once it is determined that all of the Warranty and Return Terms are met. All credits are processed on Fridays. In the event a Friday falls on a Holiday, the credit will be issued on the following Friday.

# **TWR Lighting, Inc.** **HARK**

*Enlightened Technology*

## **AA1-MDF CONTROLLER**

---

### **Warranty & Return Policy** (continued)

**Freight** – All warranty replacement part(s) will be shipped via ground delivery and paid for by TWR®. Delivery other than ground is the responsibility of the customer.

REMEDIES UNDER THIS WARRANTY ARE LIMITED TO PROVISIONS OF REPLACEMENT PARTS AND REPAIRS AS SPECIFICALLY PROVIDED. IN NO EVENT SHALL TWR® BE LIABLE FOR ANY OTHER LOSSES, DAMAGES, COSTS, OR EXPENSES INCURRED BY THE CUSTOMER, INCLUDING, BUT NOT LIMITED TO, LOSS FROM FAILURE OF THE PRODUCT(S) TO OPERATE FOR ANY TIME, AND ALL OTHER DIRECT, INDIRECT, SPECIAL, INCIDENTAL, OR CONSEQUENTIAL DAMAGES, INCLUDING ALL PERSONAL INJURY OR PROPERTY DAMAGE DUE TO ALLEGED NEGLIGENCE, OR ANY OTHER LEGAL THEORY WHATSOEVER. THIS WARRANTY IS MADE BY TWR® EXPRESSLY IN LIEU OF ALL OTHER WARRANTIES, WHETHER EXPRESSED OR IMPLIED. WITHOUT LIMITING THE GENERALITY OF THE FORGOING, TWR® MAKES NO WARRANTY OF MERCHANTABILITY OR FITNESS OF THE PRODUCT(S) FOR ANY PARTICULAR PURPOSE. TWR® EXPRESSLY DISCLAIMS ALL OTHER WARRANTIES.



# **TWR Lighting, Inc.** HARK<sup>®</sup>

*Enlightened Technology<sup>®</sup>*

## **AA1-MDF CONTROLLER**

---

---

### **RETURN MERCHANDISE AUTHORIZATION (RMA) FORM**

**RMA#:** \_\_\_\_\_ **DATE:** \_\_\_\_\_

**CUSTOMER:** \_\_\_\_\_

---

**CONTACT:** \_\_\_\_\_ **PHONE NO.:** \_\_\_\_\_

**ITEM DESCRIPTION (PART NO.):** \_\_\_\_\_

---

**MODEL NO.:** \_\_\_\_\_ **SERIAL NO.:** \_\_\_\_\_

**ORIGINAL TWR INVOICE NO.:** \_\_\_\_\_ **DATED:** \_\_\_\_\_

**DESCRIPTION OF PROBLEM:** \_\_\_\_\_

---

---

---

**SIGNED:** \_\_\_\_\_ **DATE NEEDED:** \_\_\_\_\_

**RETURN ADDRESS:** \_\_\_\_\_

---

PLEASE RETURN PRODUCT TO: 10810 W. LITTLE YORK RD. #130 HOUSTON, TX 77041-4051



# **TWR Lighting, Inc.** HARK<sup>®</sup>

*Enlightened Technology<sup>®</sup>*

## **AA1-MDF CONTROLLER**

---

---

### **RETURN MERCHANDISE AUTHORIZATION (RMA) FORM**

**RMA#:** \_\_\_\_\_ **DATE:** \_\_\_\_\_

**CUSTOMER:** \_\_\_\_\_

\_\_\_\_\_

**CONTACT:** \_\_\_\_\_ **PHONE NO.:** \_\_\_\_\_

**ITEM DESCRIPTION (PART NO.):** \_\_\_\_\_

\_\_\_\_\_

**MODEL NO.:** \_\_\_\_\_ **SERIAL NO.:** \_\_\_\_\_

**ORIGINAL TWR INVOICE NO.:** \_\_\_\_\_ **DATED:** \_\_\_\_\_

**DESCRIPTION OF PROBLEM:** \_\_\_\_\_

\_\_\_\_\_

\_\_\_\_\_

\_\_\_\_\_

**SIGNED:** \_\_\_\_\_ **DATE NEEDED:** \_\_\_\_\_

**RETURN ADDRESS:** \_\_\_\_\_

\_\_\_\_\_

PLEASE RETURN PRODUCT TO: 10810 W. LITTLE YORK RD. #130 HOUSTON, TX 77041-4051





**AA1-MDF (MOTOR DRIVEN FLASHER)**  
**CHASSIS LAYOUT**

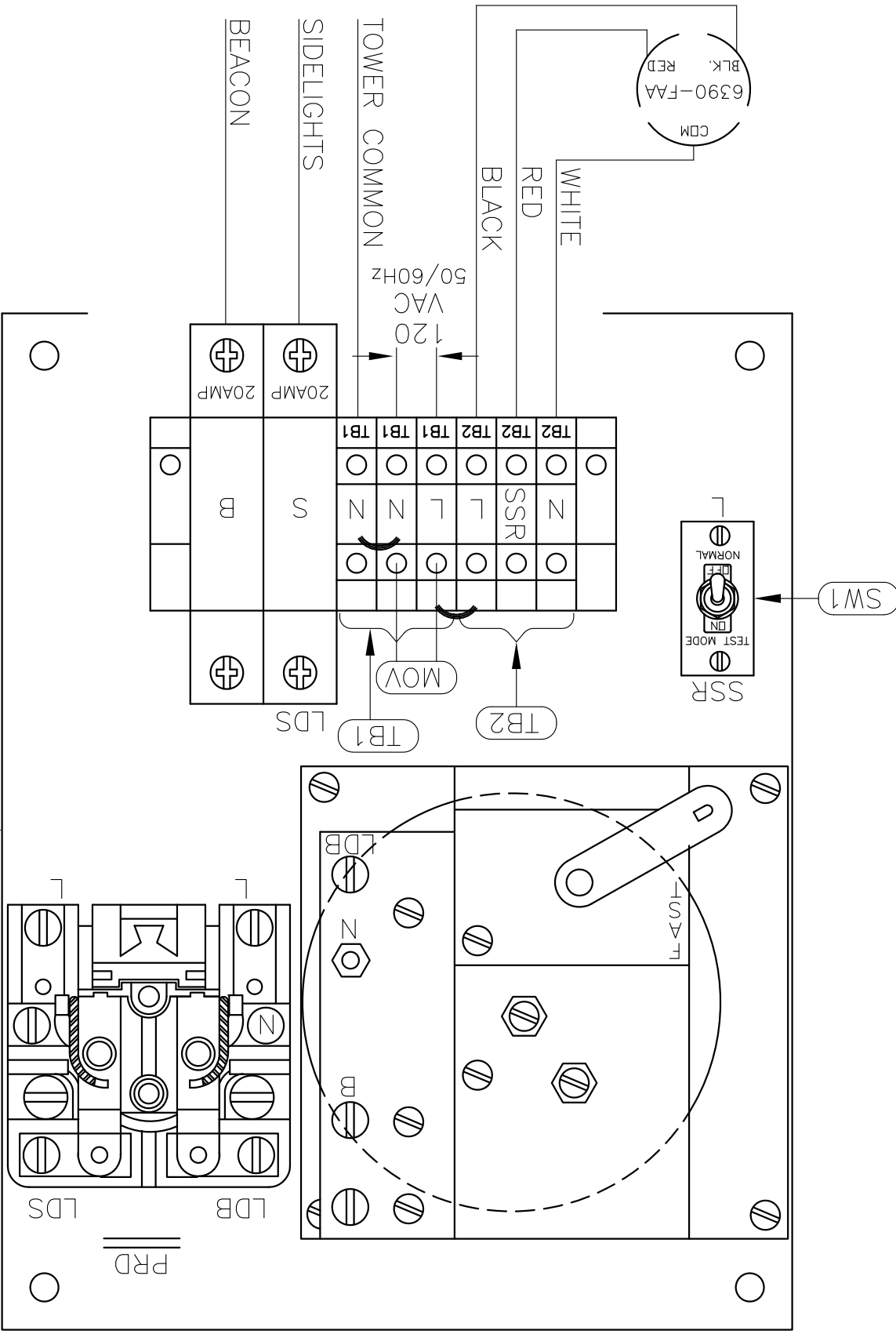
PROD DEPT \_\_\_\_\_  
SERV DEPT \_\_\_\_\_  
ENGINEER \_\_\_\_\_

DRAWN BY G.D. SEBEK  
DATE 06/12/92 SCALE N.T.S.  
SHEET SIZE SHEET QTY. 1 OF 1  
DWG. NO. 213-R

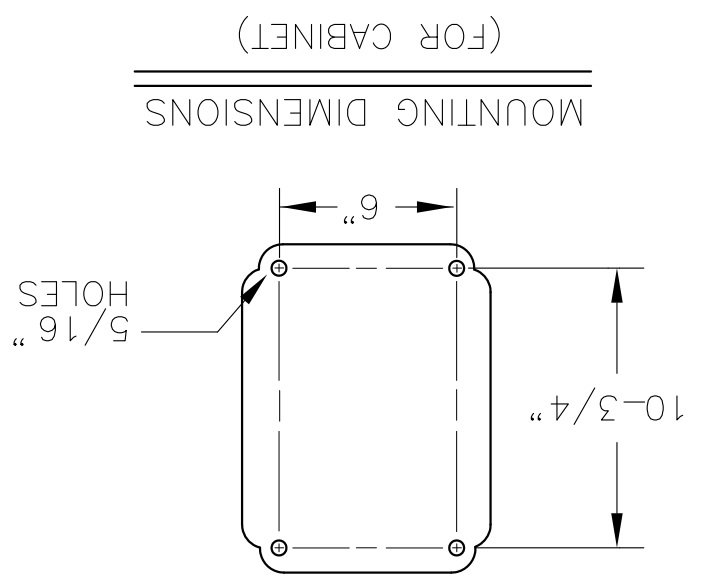
PHOTOCEL  
E LTR. REVISION  
DATE: 07/22/08

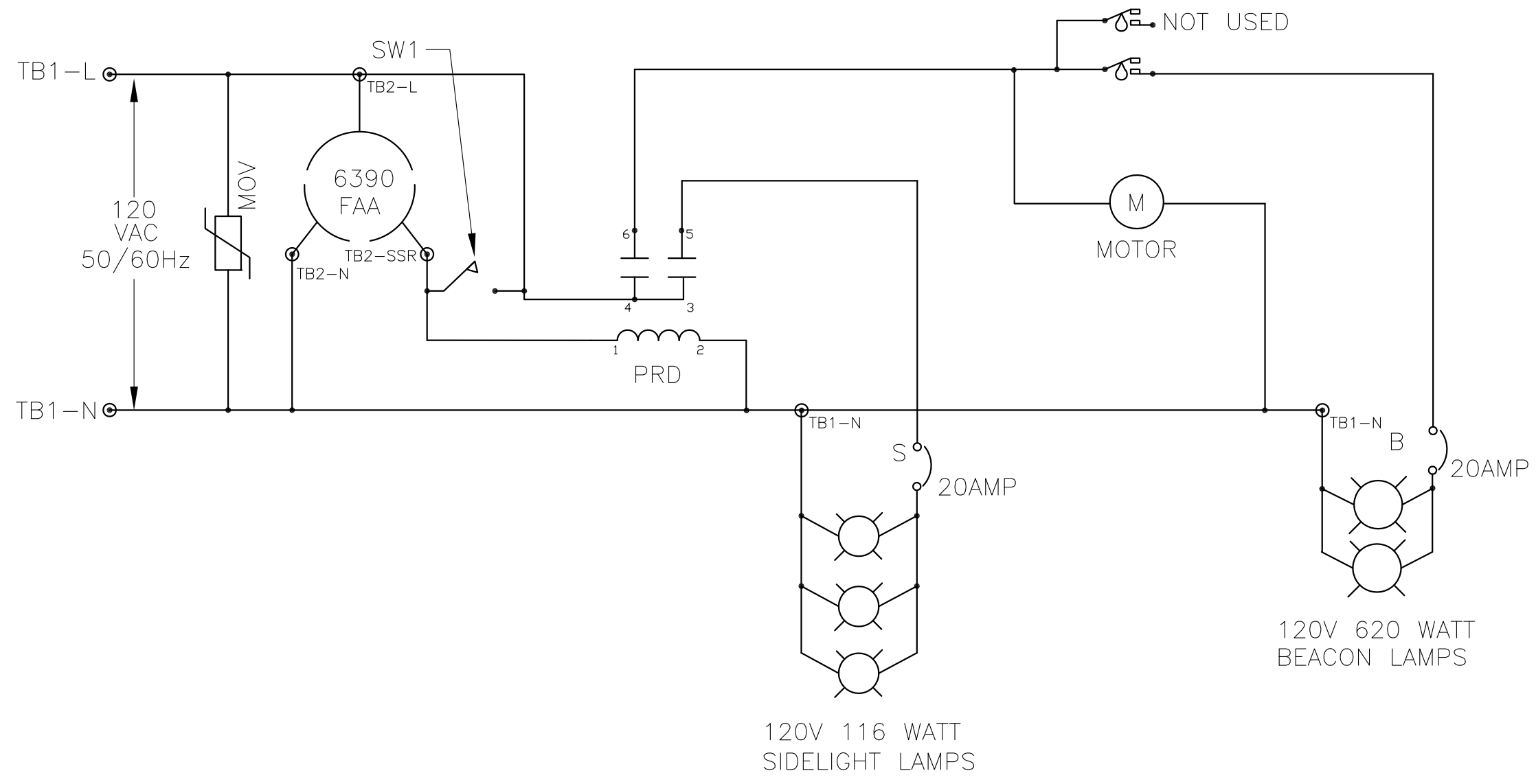
NOTICE: The drawings and photographic images contained herein are the sole property of TWR Lighting, Inc. All information contained herein that is not generally known shall be considered confidential except to the extent the information has been previously established. The drawings and photographic images contained herein may not be reproduced, copied or used as the basis for manufacture or sale or promotion or any other purpose without the expressed written permission of TWR Lighting, Inc.

The use of non-Cad part or modifications to digital equipment design will void the manufacturer warranty and could invalidate the assurance of complying with FAA requirements as published in Advisory Circular 150/545-43.



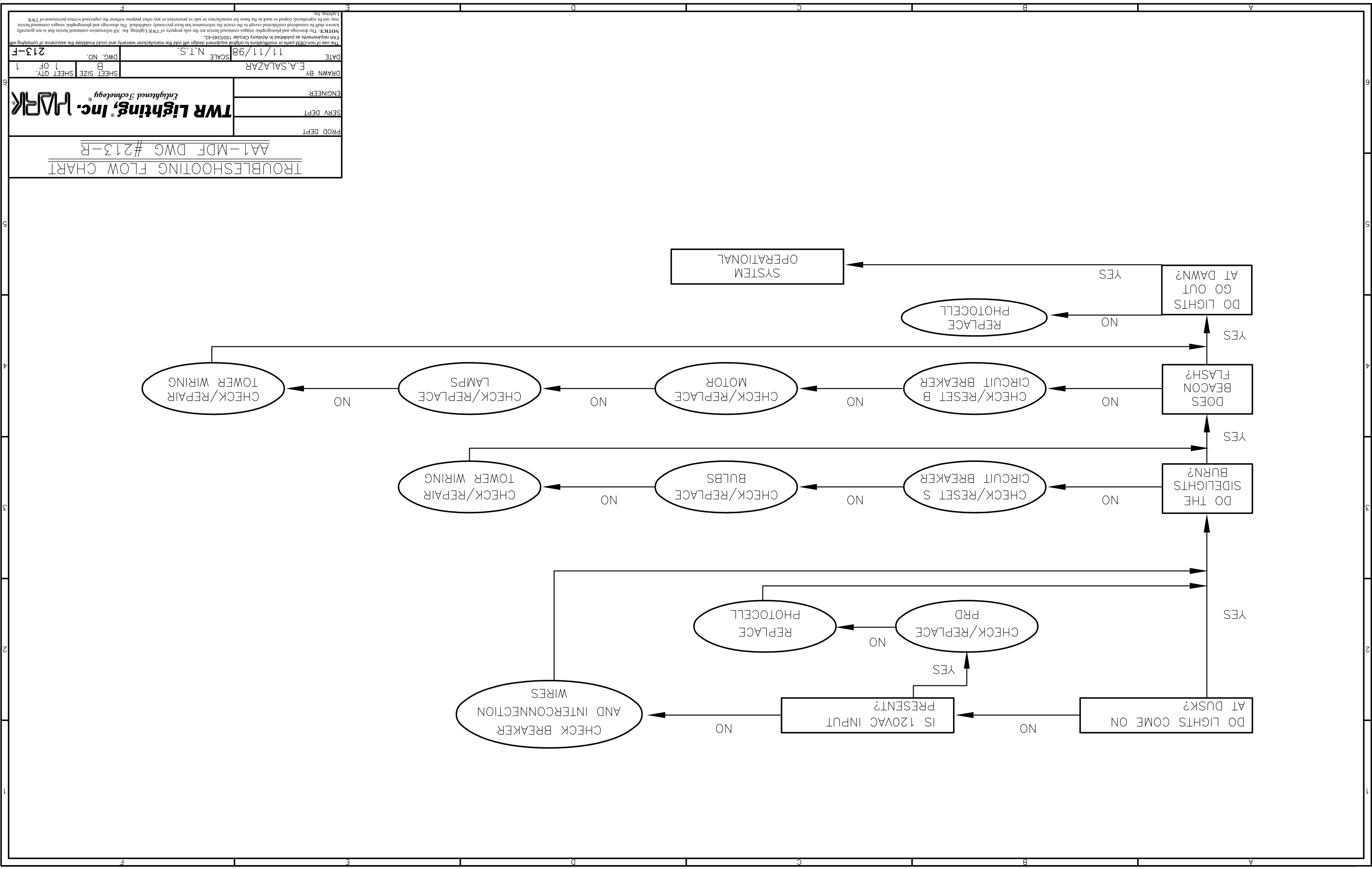
- NOTES:
1. PLUG 6390-FAA PHOTOCELL INTO 43109 TWIST LOCK RECEPTACLE AND TWIST TO LOCK.
  2. WIRES ARE CONNECTED LETTER TO LETTER. (EXAMPLE) L TO L TO L...





<b>AA1-MDF (MOTOR DRIVEN FLASHER)</b>			
<b>SCHEMATIC LAYOUT</b>			
PROD DEPT	<b>TWR Lighting, Inc.</b> <i>Enlightened Technology</i> <b>WORK</b>		
SERV DEPT			
ENGINEER			
DRAWN BY	E.A.SALAZAR	SHEET SIZE	SHEET QTY.
DATE	06/12/95	B	1 OF 1
		SCALE	DWG. NO.
		N.T.S.	213-S
<small>The use of non-OEM parts or modifications to original equipment design will void the manufacturer warranty and could invalidate the assurance of complying with FAA requirements as published in Advisory Circular 150/5345-43.</small>			
<small>NOTICE: The drawings and photographic images contained herein are the sole property of TWR Lighting, Inc. All information contained herein that is not generally known shall be considered confidential except to the extent the information has been previously established. The drawings and photographic images contained herein may not be reproduced, copied or used as the basis for manufacture or sale or promotion or any other purpose without the expressed written permission of TWR Lighting, Inc.</small>			

07/22/08		PHOTOCELL
DATE:	LTR.	REVISION



TRUBLESHOOTING FLOW CHART  
A1-MDF DWG #213-R

PROD DEPT

SERV DEPT

ENGINEER

DRAWN BY E.A.SALAZAR

DATE 11/11/98 SCALE N.T.S.

DWG. NO. 213-F

SHEET SIZE B SHEET QTY. 1 OF 1

The use of non-CAD parts or modifications to original equipment design will void the manufacturer warranty and could invalidate the assurance of compliance with FAA requirements as published in Advisory Circular 150/545-43.

NOTICE: The drawings and photographic images contained herein are the sole property of TWR Lighting, Inc. All information contained herein that is not generally known shall be considered confidential except to the extent the information has been previously established. The drawings and photographic images contained herein may not be reproduced, copied or used as the basis for manufacture or sale or promotion or any other purpose without the expressed written permission of TWR Lighting, Inc.



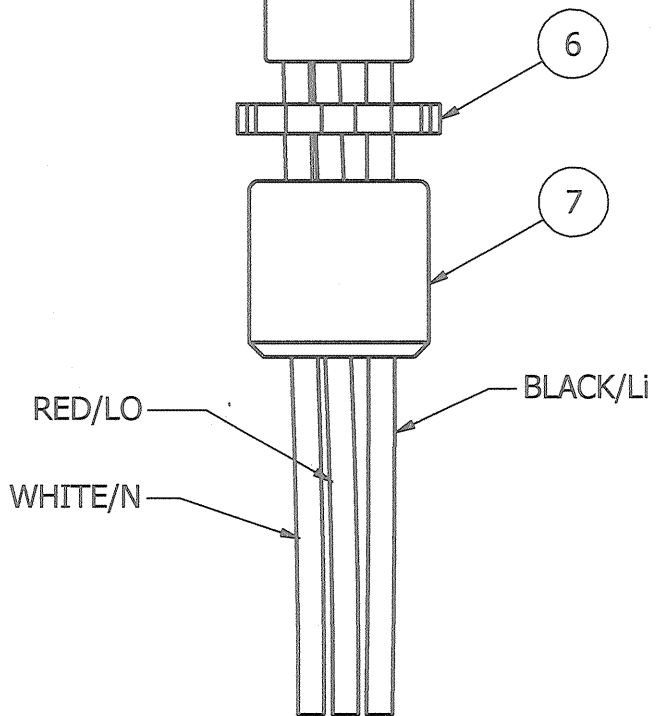
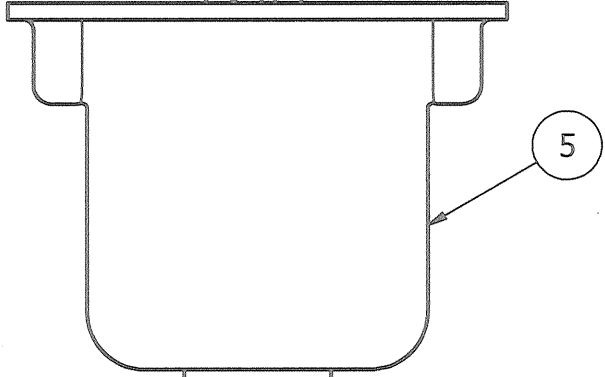
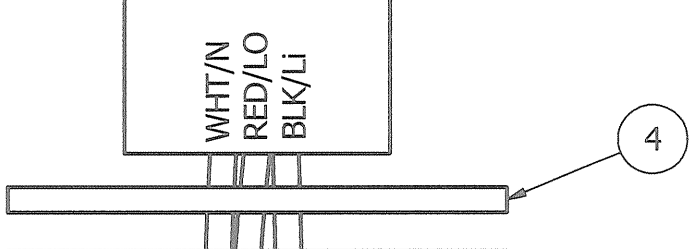
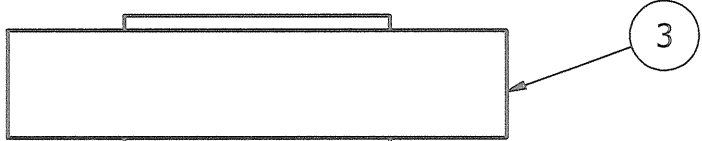
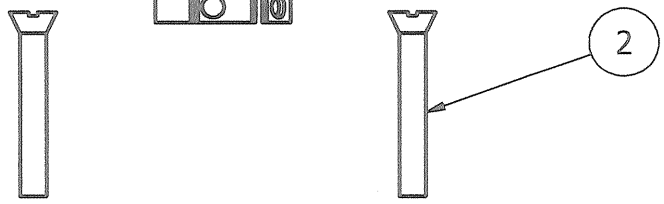
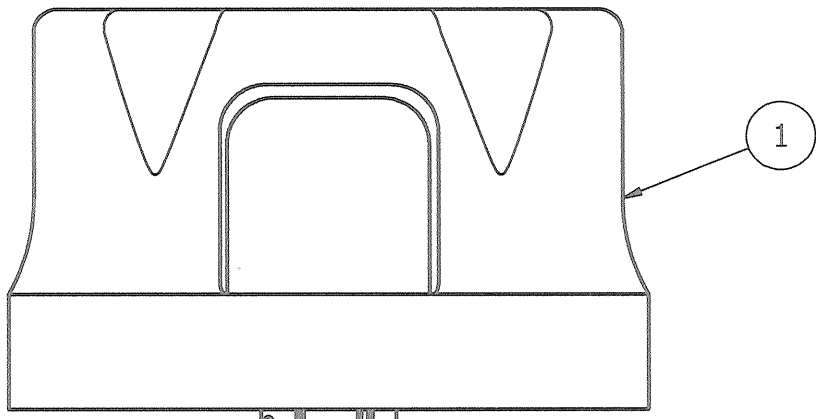
4

3

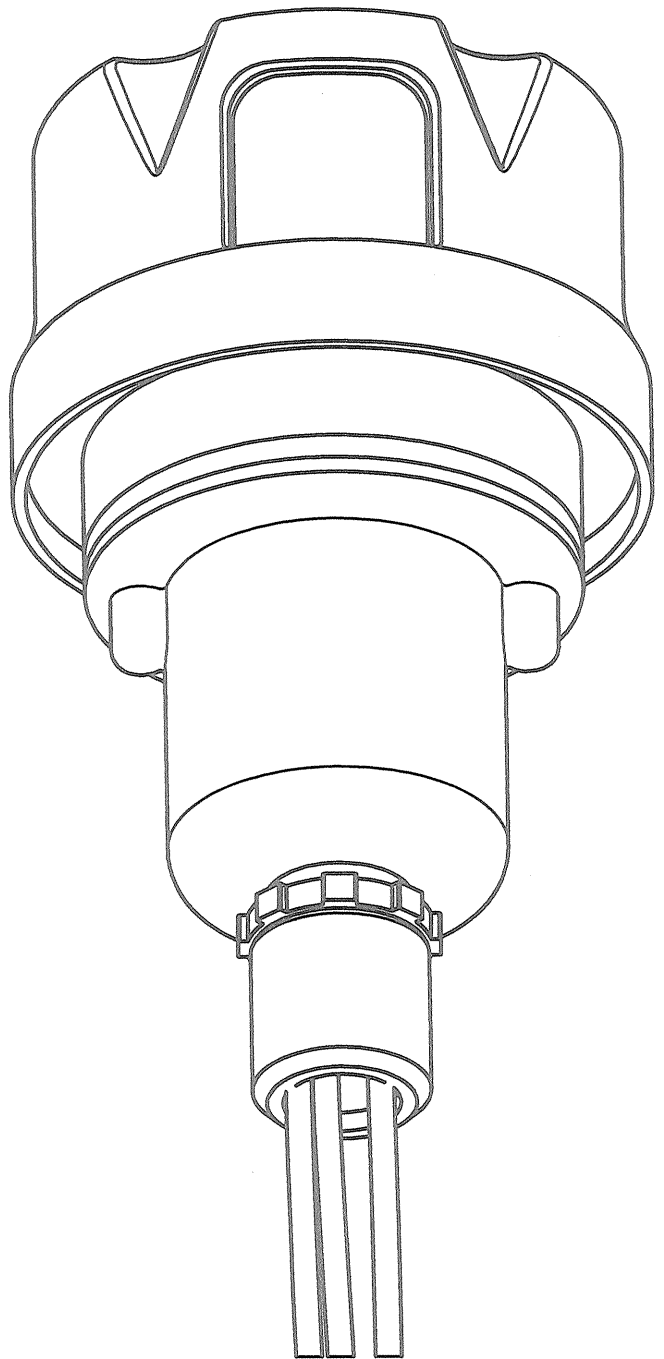
2

1

PARTS LIST		
ITEM	QTY	PART NUMBER
1	1	PHOTOCELL
2	2	6-32 x 1" SCREW
3	1	RECEPTACLE SOCKET
4	1	RECEPTACLE GASKET
5	1	RECEPTACLE HOUSING
6	1	1/2" CONDUIT LOCKNUT
7	1	3/4" TO 1/2" REDUCER



EXPLODED VIEW



ASSEMBLY

NOTES:

- ITEM #7 CAN BE USED TO REDUCE 3/4" CONDUIT TO 1/2" CONDUIT AT THE HOUSING OR AT THE CONTROLLER ITSELF.
- IF ADDITIONAL WIRE IS REQUIRED OVER THE FACTORY 20', USE THE FOLLOWING CHART.  
 21' TO 300' - 16 AWG TFFN  
 301' TO 500' - 14 AWG TFFN

PHOTOCELL HOUSING DETAIL

PROD. DEPT  
 SERV. DEPT  
 ENGINEER

**TWR Lighting, Inc. HARK**  
 Enlightened Technology®

DRAWN BY	vhernandez	SHEET SIZE	B	SHEET QTY.	1 OF 1
DATE	10/18/1995	SCALE	1/1	DWG. NO.	100239i

DATE	REV	AUTHOR	DESCRIPTION
02/03/2015	H	JZAMORANO	UPDATED NOTES

4

3

2

1

**BILL OF MATERIALS**

ITEM NO.	QTY.	TWR PART NO.	DESCRIPTION
1	1	BEACON	300 MM BEACON RED
2	2	---	120 OR 240 VOLT LAMP
3	2	OL1	3/4" OBSTRUCTION LIGHT
4	2	---	120 OR 240 VOLT LAMP
5	1	CGB295SA	3/4" CORD CONNECTOR
6	3	JB5	3/4" JUNCTION BOX
7	2	EL3490	3/4" 90° SHORT ELBOW
8	2	5012902	3/4" BREATHER
9	3	UNY205	3/4" UNION
10	1	SS10012	WRAPLOCK
11	1	PDPDP	4 oz. PIPE DOPE
12	10	A314	3/4" CONDUIT LOCKNUTS
13	2	HC402	3/4" NO THREAD CONNECTOR
14	20	CONDUIT34	3/4" CONDUIT (FOR OL)
15	2	SLPIGTA16	SIDELIGHT PIGTAIL 6 FEET
16	1	AA1	AA1 CONTROLLER

ITEM NUMBERS #17-#20 ARE NOT INCLUDED IN THE KIT BUT, ARE AVAILABLE UPON REQUEST AND REQUIRED FOR INSTALLATION.

17	---	CONDUIT34	3/4" CONDUIT (TOWER HT. + 30'/9M)
18	---	8THHNWHT	#8 THHN WHT. WIRE (TOWER HT.+40'/12M)
19	---	8THHNBK	#8 THHN BLK. WIRE (TOWER HT.+40'/12M)
20	---	12THNRED	#12 THHN RED WIRE (1/2 TWR HT.+40'/12M)

\* = ITEMS NOT SHOWN

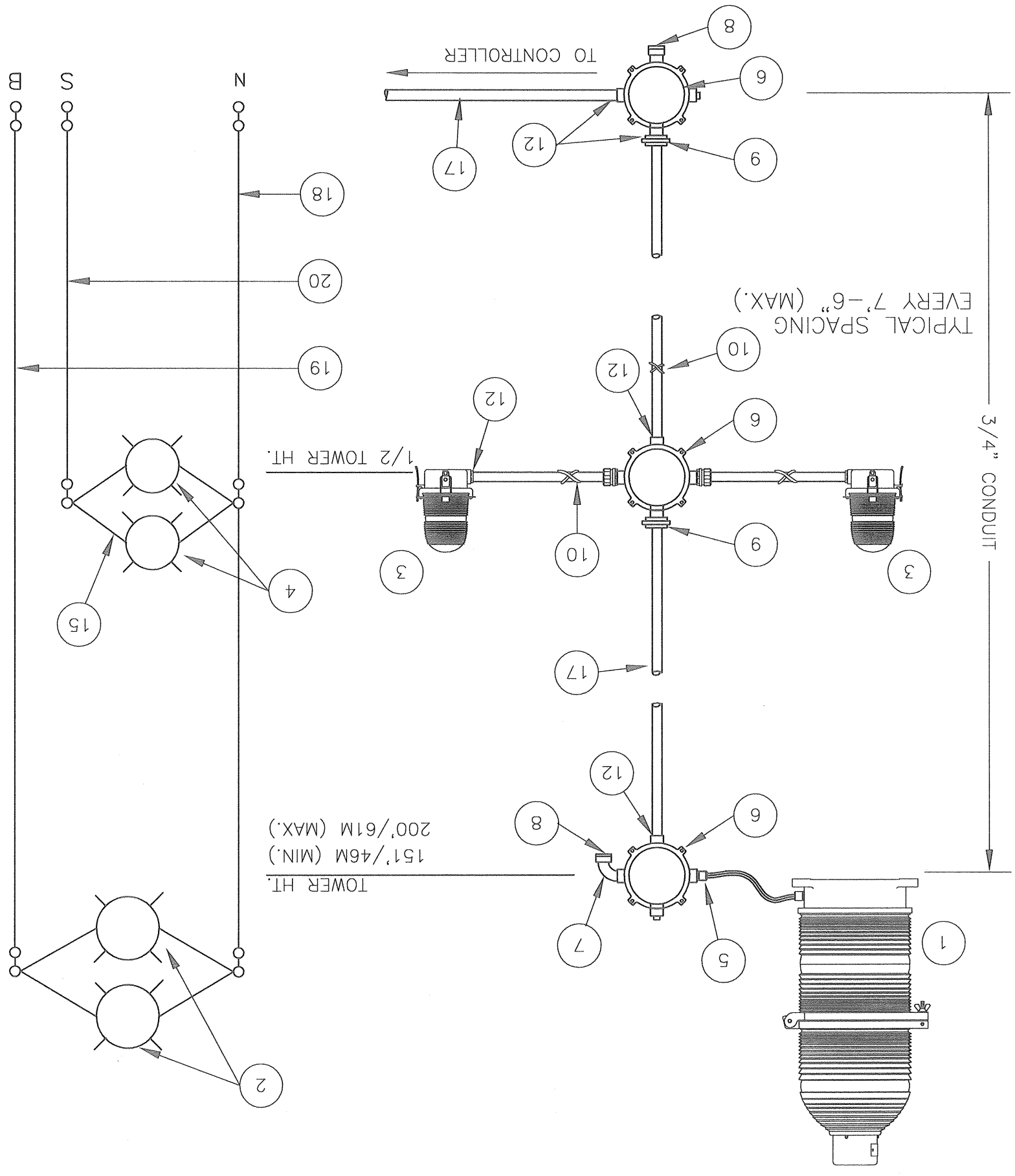
- NOTES:
- 1) PART #CONDUIT34 CUT TO LENGTH FOR PROPER EXTENSION OF OL1 (6"-12") FROM STRUCTURE. ATTACH PART #HC402 TO UNTHREADED CONDUIT TO COMPLETE ASSEMBLY.
  - 2) CONDUIT SIZE BASED ON USING TYPE THHN WIRE.
  - 3) USE RIGID GALVANIZED STEEL CONDUIT.
  - 4) BREATHERS ALLOW FOR CIRCULATION OF AIR TO PREVENT CONDENSATION.

**TWR Lighting, Inc.**  
*Enlightened Technology*

PROD DEPT: \_\_\_\_\_  
 SERV DEPT: \_\_\_\_\_  
 ENGINEER: \_\_\_\_\_  
 DRAWN BY: E.A.SALAZAR  
 SCALE: N.T.S.  
 DATE: 1/5/93  
 SHEET SIZE: B  
 SHEET QTY: 1 OF 1  
 DWG. NO.: 260-11

CHG OL ARRANGEMENT  
 DATE: 12/04/07  
 LTR. [E]  
 REVISION

The use of non-OEM parts or modifications to original equipment design will void the manufacturer warranty and could invalidate the assurance of compliance with FAA requirements as published in Advisory Circular 150/5345-43. All drawings and photographic images contained herein are the sole property of TWR Lighting, Inc. All information contained herein that is not generally known shall be considered confidential except to the extent the information has been previously established. The drawings and photographic images contained herein may not be reproduced, copied or used in any other purpose without the expressed written permission of TWR Lighting, Inc.

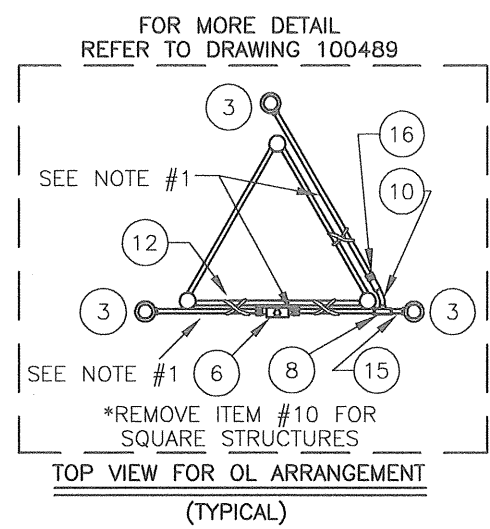
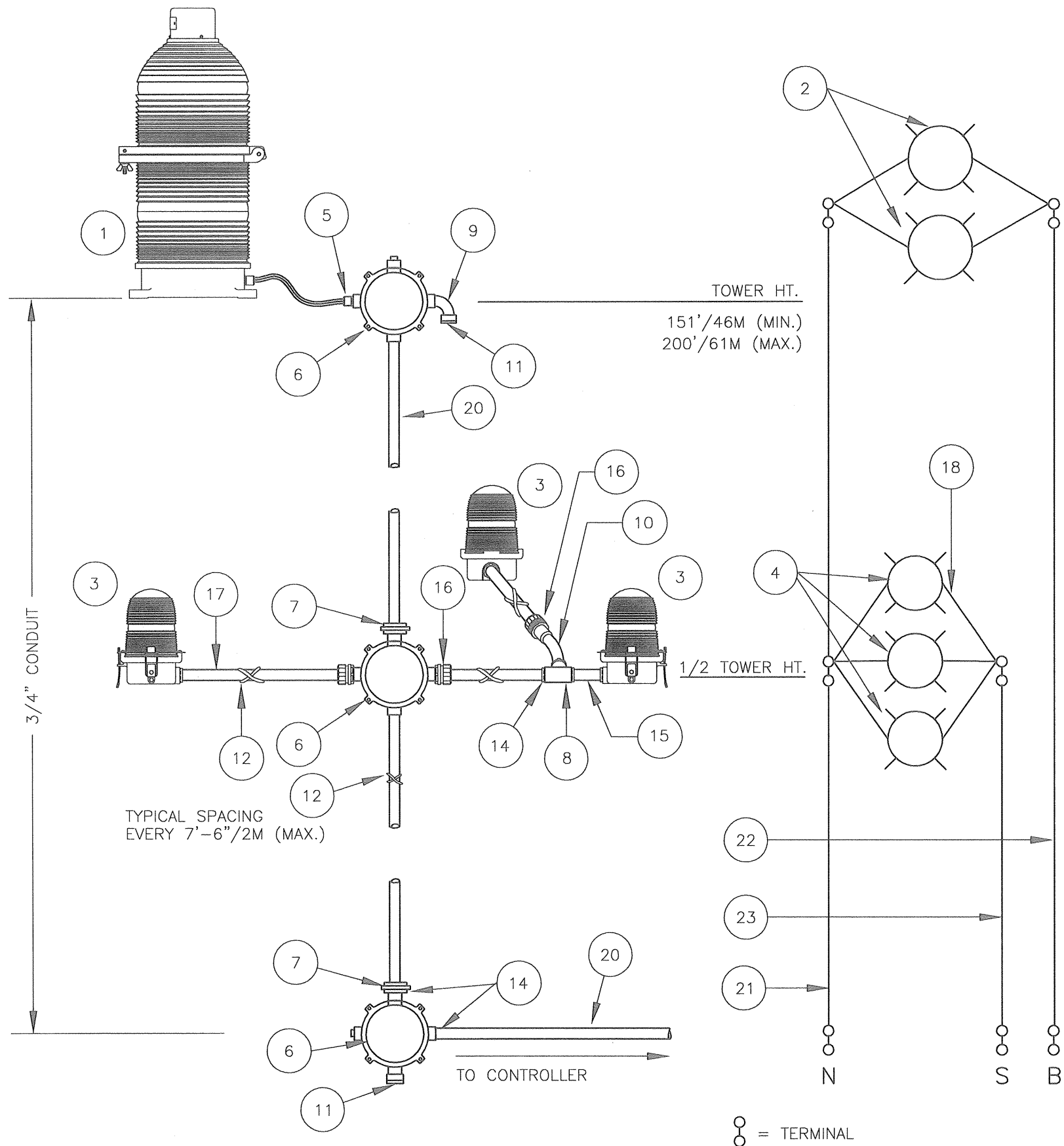


TOWER HT.  
 151'/46M (MIN.)  
 200'/61M (MAX.)

TYPICAL SPACING  
 EVERY 7'-6" (MAX.)

3/4" CONDUIT

⊗ = TERMINAL



### BILL OF MATERIALS

ITEM NO.	QTY.	TWR PART NO.	DESCRIPTION
1	1	BEACON	300 MM BEACON RED
2	2	---	120 OR 240 VOLT LAMP
3	3	OL1	3/4" OBSTRUCTION LIGHT
4	3	---	120 OR 240 VOLT LAMP
5	1	CGB295SA	3/4" CORD CONNECTOR
6	3	JB5	3/4" JUNCTION BOX
7	4	UNY205	3/4" UNION
8	2	T27CG	3/4" CONDULET W/COVER AND GASKET
9	2	EL3490	3/4" 90° SHORT ELBOW
10	1	EL3430	3/4" 30° ELBOW
11	2	5012902	3/4" BREATHER
12	1	SS10012	WRAPLOCK
* 13	1	PIPDOP	4 oz. PIPE DOPE
14	12	A314	3/4" CONDUIT LOCKNUTS
15	1	N34T3	3/4" x 3" NIPPLE
16	3	HC402	3/4" NO THREAD CONNECTOR
17	30'	CONDUIT34	3/4" CONDUIT (FOR OL)
18	3	SLPIGTAIL25	25' SIDELIGHT PIGTAIL
* 19	1	AA1	AA1 CONTROLLER

ITEM NUMBERS #20-#23 ARE NOT INCLUDED IN THE KIT BUT ARE AVAILABLE UPON REQUEST, AND REQUIRED FOR INSTALLATION.

20	-	CONDUIT34	3/4" CONDUIT (TOWER HT. + 30'/9M)
21	-	8THHNWHT	#8 THHN WHT. WIRE (TOWER HT.+40'/12M)
22	-	8THHNBK	#8 THHN BLK. WIRE (TOWER HT.+40'/12M)
23	-	12THHNRED	#12 THHN RED WIRE (1/2 TWR HT.+40'/12M)

\* = ITEMS NOT SHOWN

#### NOTES:

- 1) PART #CONDUIT34 CUT TO LENGTH FOR PROPER EXTENTION OF OL1 (6"-12") FROM STRUCTURE. ATTACH PART #HC402 TO UNTHREADED CONDUIT TO COMPLETE ASSEMBLY.
- 2) CONDUIT SIZE BASED ON USING TYPE THHN WIRE.
- 3) USE RIGID GALVANIZED STEEL CONDUIT.
- 4) BREATHERS ALLOW FOR CIRCULATION OF AIR TO PREVENT CONDENSATION.
- 5) USE COUPLING THAT IS PROVIDED WITH PART #CONDUIT34 TO ATTACH PART #EL3430 TO PART #HC402.

LK3A1 TOWER LIGHTING KIT W/NO BOOST  
(TOWERS 151'/46M TO 200'/61M)

PROD DEPT \_\_\_\_\_  
SERV DEPT \_\_\_\_\_  
ENGINEER \_\_\_\_\_

**TWR Lighting, Inc.**  
Enlightened Technology®

DRAWN BY G.D. SEBEK  
DATE 3/5/94 SCALE N.T.S.

SHEET SIZE B SHEET QTY. 1 OF 1  
DWG. NO. 260-13

The use of non-OEM parts or modifications to original equipment design will void the manufacturer warranty and could invalidate the assurance of complying with FAA requirements as published in Advisory Circular 150/5345-43.  
NOTICE: The drawings and photographic images contained herein are the sole property of TWR Lighting, Inc. All information contained herein that is not generally known shall be considered confidential except to the extent the information has been previously established. The drawings and photographic images contained herein may not be reproduced, copied or used as the basis for manufacture or sale or promotion of any other purpose without the expressed written permission of TWR Lighting, Inc.

12/03/07	(E)	CHG OL ARRANGEMENT
DATE:	LTR.	REVISION

**BILL OF MATERIALS**

ITEM NO.	QTY.	TWR PART NO.	DESCRIPTION
1	1	BEACON	300 MM BEACON RED
2	2	---	120 OR 240 VOLT LAMP
3	2	OL1	3/4" OBSTRUCTION LIGHT
4	2	---	120 OR 240 VOLT LAMP
5	1	CGB2955A	3/4" CORD CONNECTOR
6	3	JB5	3/4" JUNCTION BOX
7	2	JB0	3/4" STRAIN RELIEF BOX
8	2	EL3490	3/4" 90° SHORT ELBOW
9	2	5012902	3/4" BREATHER
10	5	UNY205	3/4" UNION
11	1	SS10012	WRAPLOCK
12	1	PIPDOP	4 oz. PIPE DOPE
13	14	A314	3/4" CONDUIT LOCKNUTS
14	2	HC402	3/4" NO THREAD CONNECTOR
15	20'	CONDUIT34	3/4" CONDUIT (FOR OL)
16	2	SLPIG1AL6	SIDELIGHT PIGTAIL 6 FEET
17	1	AA1	AA1 CONTROLLER
* ITEM NUMBERS #18-#21 ARE NOT INCLUDED IN THE KIT BUT ARE AVAILABLE UPON REQUEST, AND REQUIRED FOR INSTALLATION.			
18	-	CONDUIT34	3/4" CONDUIT (TOWER HT. + 30'/9M)
19	-	6THHNWHT	#6 THHN WHT. WIRE (TOWER HT.+40'/12M)
20	-	6THHNBK	#6 THHN BLK. WIRE (TOWER HT.+40'/12M)
21	-	12THHNRED	#12 THHN RED WIRE (1/2 TWR HT.+40'/12M)
* = ITEMS NOT SHOWN			

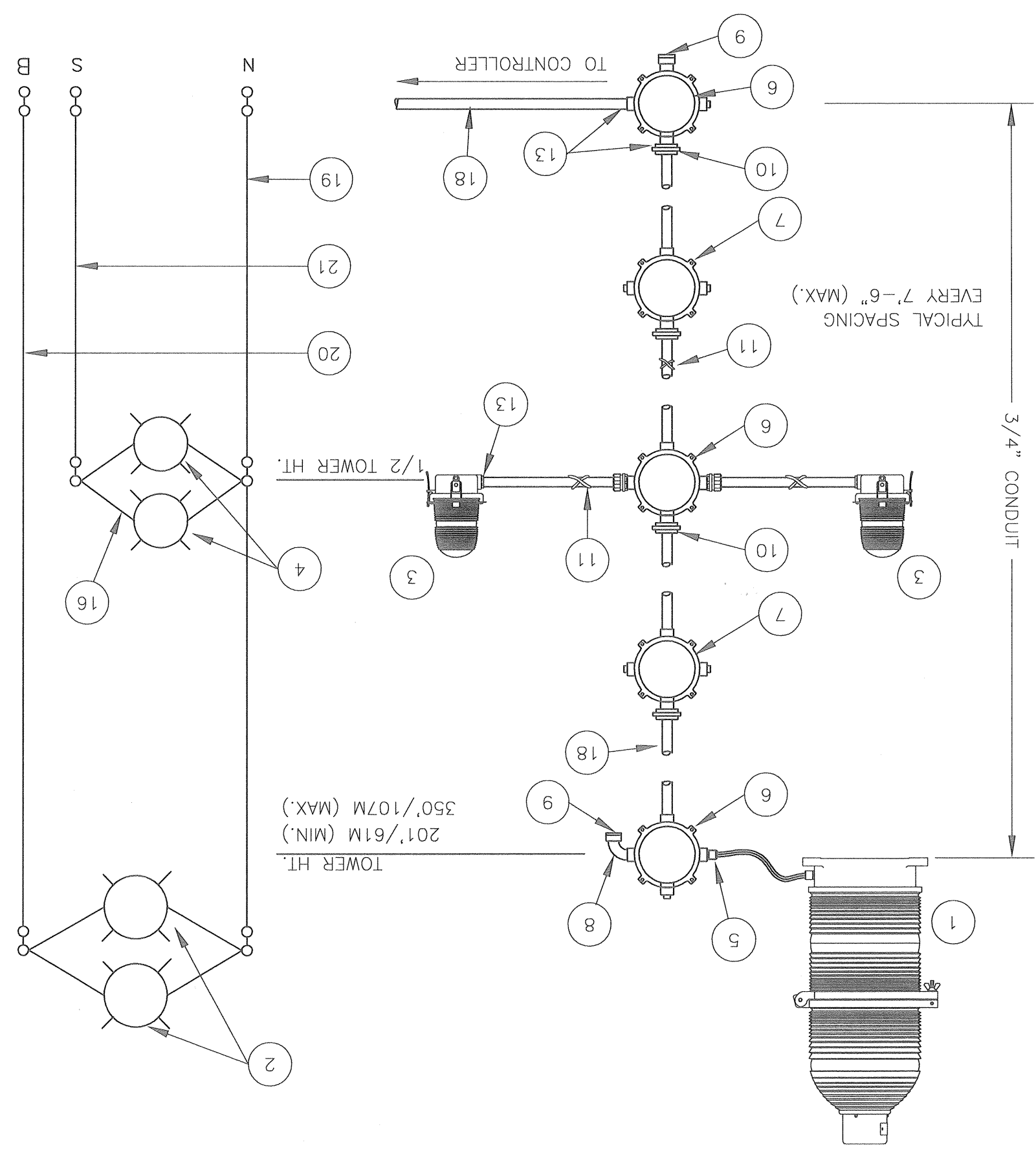
**NOTES:**  
 1) PART #CONDUIT34 CUT TO LENGTH FOR PROPER EXTENSION OF OL1 (6"-12") FROM STRUCTURE. ATTACH PART #HC402 TO UNTHREADED CONDUIT TO COMPLETE ASSEMBLY.  
 2) CONDUIT SIZE BASED ON USING TYPE THHN WIRE.  
 3) USE RIGID GALVANIZED STEEL CONDUIT.  
 4) BREATHERS ALLOW FOR CIRCULATION OF AIR TO PREVENT CONDENSATION.

**LK2A1 TOWER LIGHTING KIT W/NO BOOST**  
 (TOWERS 201'/61M TO 350'/107M)

PROD. DEPT. \_\_\_\_\_  
 SERV. DEPT. \_\_\_\_\_  
 ENGINEER \_\_\_\_\_  
 DRAWN BY E.A.SALAZAR  
 DATE 01/05/93 SCALE N.I.S.  
 DWG. NO. \_\_\_\_\_ SHEET SIZE B SHEET QTY. 1 OF 1  
 260-12

DATE: 02/17/2015 LTR. \_\_\_\_\_ REVISION \_\_\_\_\_  
 02/17/2015 [E] UPDATED B.O.M.

NOTICE: The drawings and photographic images contained herein are the sole property of TWR Lighting, Inc. All information contained herein that is not generally known shall be considered confidential except to the extent the information has been previously established. The drawings and photographic images contained herein may not be reproduced, copied or used as the basis for manufacture or sale or promotion or any other purpose without the expressed written permission of TWR Lighting, Inc.  
 The use of non-OEM parts or modifications to original equipment design will void the manufacturer warranty and could invalidate the assurance of complying with FAA requirements as published in Advisory Circular 150/534-43.



# BILL OF MATERIALS

ITEM NO.	QTY.	TWR PART NO.	DESCRIPTION
1	1	BEACON	300 MM BEACON RED
2	2	---	120 OR 240 VOLT LAMP
3	3	OL1	3/4" OBSTRUCTION LIGHT
4	3	---	120 OR 240 VOLT LAMP
5	1	CGB295SA	3/4" CORD CONNECTOR
6	3	JB5	3/4" JUNCTION BOX
7	2	JB0	3/4" STRAIN RELIEF BOX
8	6	UNY205	3/4" UNION
9	2	T27CG	3/4" CONDULET W/COVER AND GASKET
10	2	EL3490	3/4" 90° SHORT ELBOW
11	1	EL3430	3/4" 30° ELBOW
12	2	5012902	3/4" BREATHER
13	1	SS10012	WRAPLOCK
* 14	1	PIPDOP	4 oz. PIPE DOPE
15	16	A314	3/4" CONDUIT LOCKNUTS
16	3	HC402	3/4" NO THREAD CONNECTOR
17	3	N34T3	3/4" x 3" NIPPLE
18	30'	CONDUIT34	3/4" CONDUIT (FOR OLS)
19	3	SLPIGTAIL25	25' SIDELIGHT PIGTAIL
* 20	1	AA1	AA1 CONTROLLER

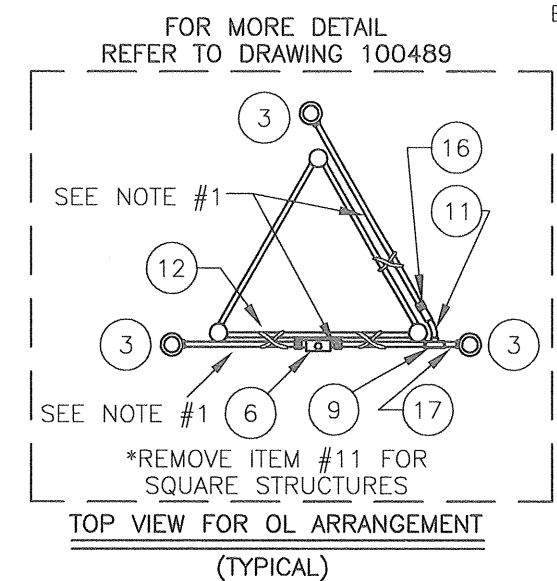
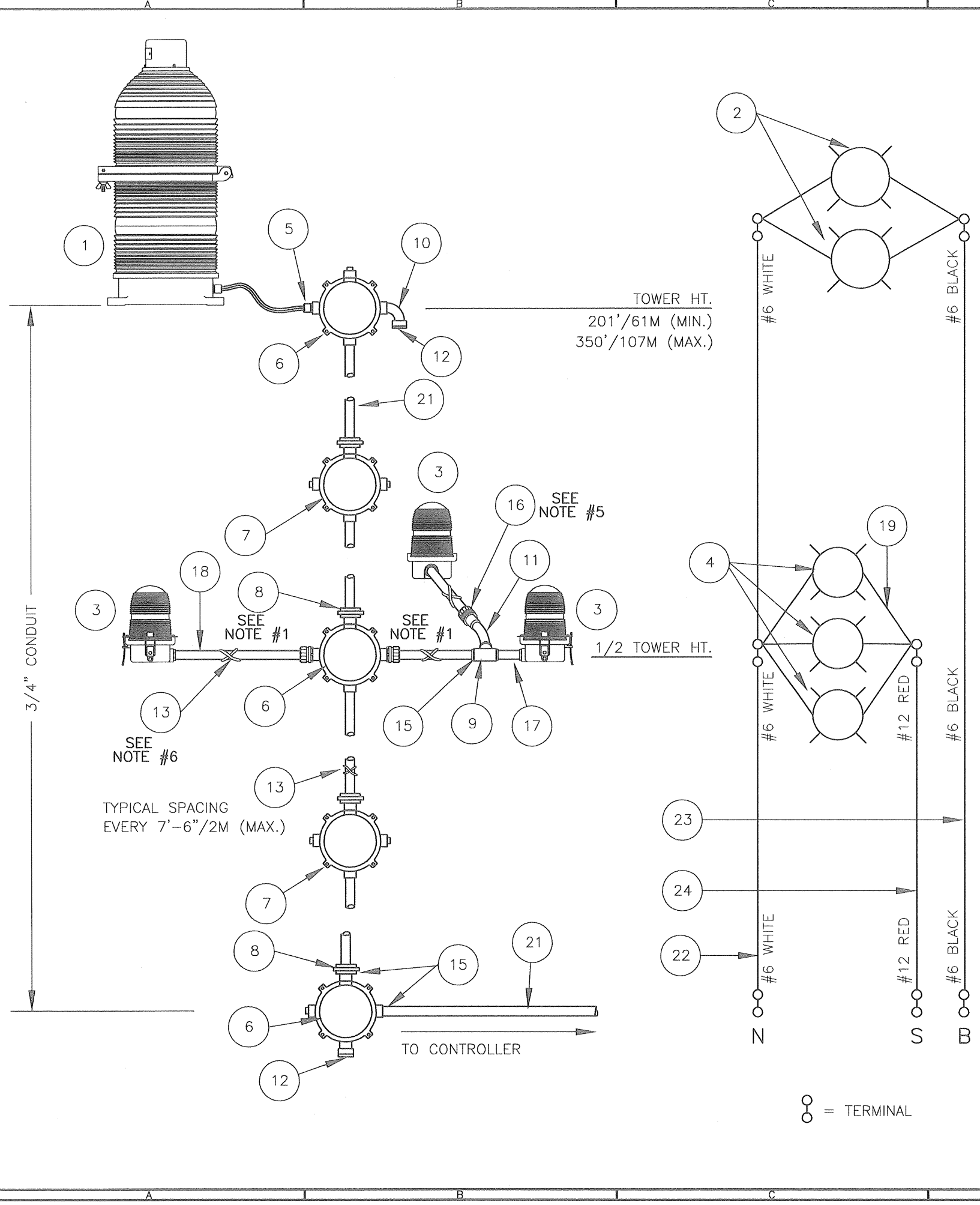
ITEM NUMBERS #21-#24 ARE NOT INCLUDED IN THE KIT BUT ARE AVAILABLE UPON REQUEST, AND REQUIRED FOR INSTALLATION.

21	-	CONDUIT34	3/4" CONDUIT (TOWER HT. + 30'/9M)
22	-	6THHNWHT	#6 THHN WHT. WIRE (TOWER HT.+40'/12M)
23	-	6THHNBK	#6 THHN BLK. WIRE (TOWER HT.+40'/12M)
24	-	12THHNRED	#12 THHN RED WIRE (1/2 TWR HT.+40'/12M)

\* = ITEMS NOT SHOWN

### NOTES:

- ITEM #CONDUIT34 CUT TO LENGTH FOR PROPER EXTENSION OF OL1 (6"-12") FROM STRUCTURE. ATTACH ITEM #HC402 TO UNTHREADED CONDUIT TO COMPLETE ASSEMBLY.
- CONDUIT SIZE BASED ON USING TYPE THHN WIRE.
- USE RIGID GALVANIZED STEEL CONDUIT.
- BREATHERS ALLOW FOR CIRCULATION OF AIR TO PREVENT CONDENSATION.
- USE COUPLING THAT IS PROVIDED WITH ITEM #CONDUIT34 TO ATTACH ITEM #EL3430 TO ITEM #HC402.
- STAINLESS STEEL WRAPLOCK TO BE ATTACH TO OL CONDUIT EVERYWHERE IT MEETS STRUCTURE.



11/11/04	(E)	UPDATED BOM
DATE:	LTR.	REVISION

(NO BOOST)

LK4A1 TOWER LIGHTING KIT W/3 OL-1  
(TOWERS 201'/61M TO 350'/107M)

PROD DEPT

SERV DEPT

ENGINEER

DRAWN BY G.D. SEBEK

DATE 03/05/94

SCALE N.T.S.

SHEET SIZE B

SHEET QTY. 1 OF 1

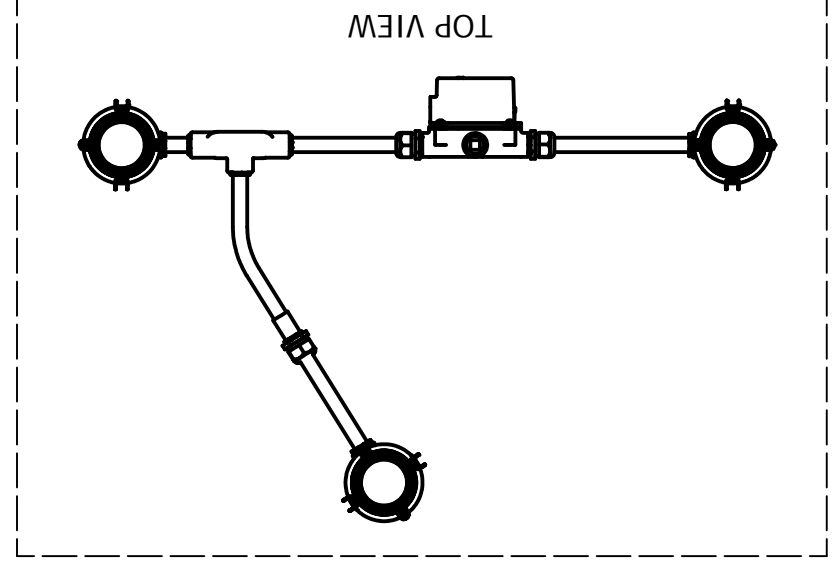
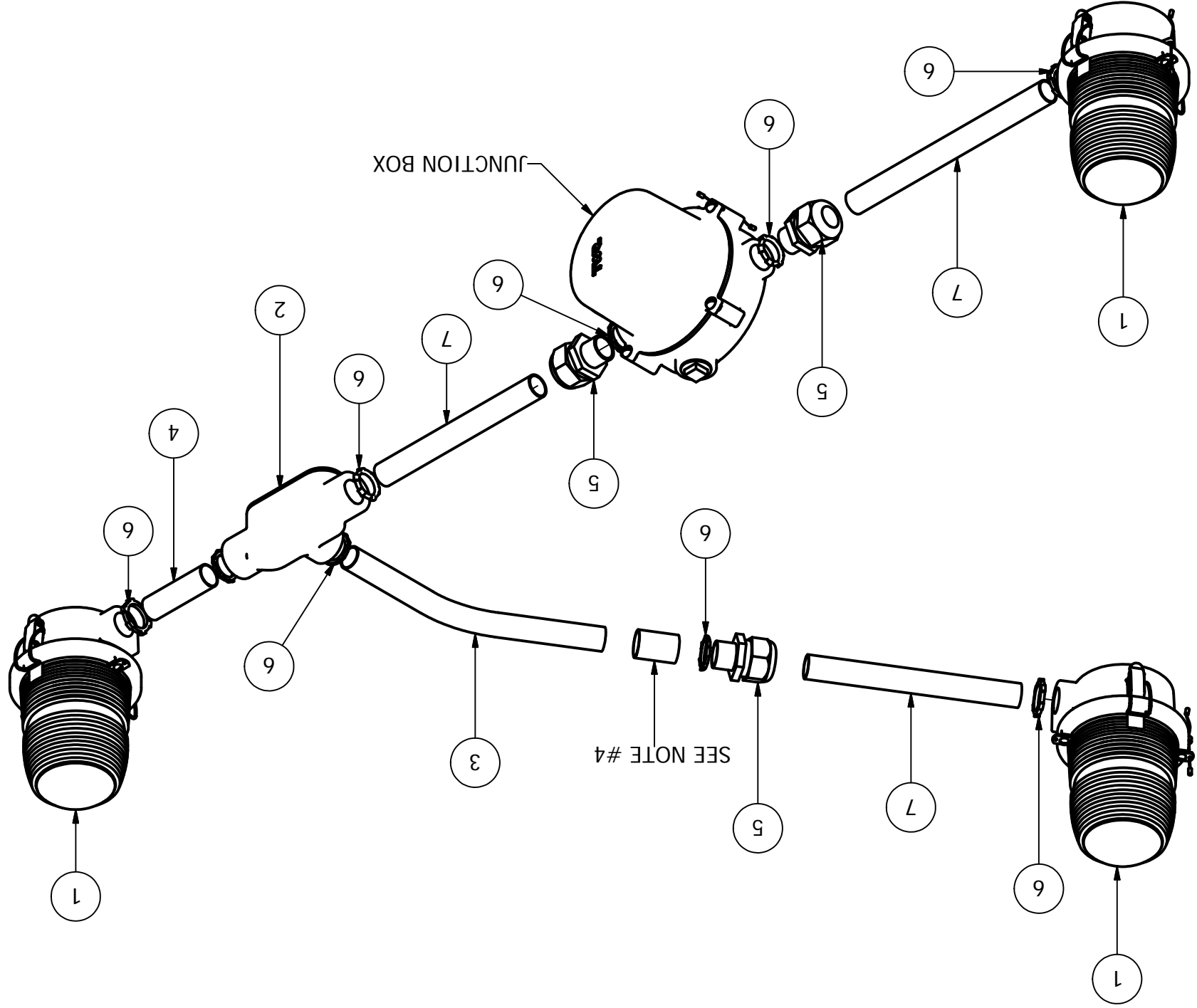
DWG. NO. 260-14

**TWR Lighting, Inc.**  
Enlightened Technology®

The use of non-OEM parts or modifications to original equipment design will void the manufacturer warranty and could invalidate the assurance of complying with FAA requirements as published in Advisory Circular 150/5345-43.

NOTICE: The drawings and photographic images contained herein are the sole property of TWR Lighting, Inc. All information contained herein that is not generally known shall be considered confidential except to the extent the information has been previously established. The drawings and photographic images contained herein may not be reproduced, copied or used as the basis for manufacture or sale or promotion or any other purpose without the expressed written permission of TWR Lighting, Inc.



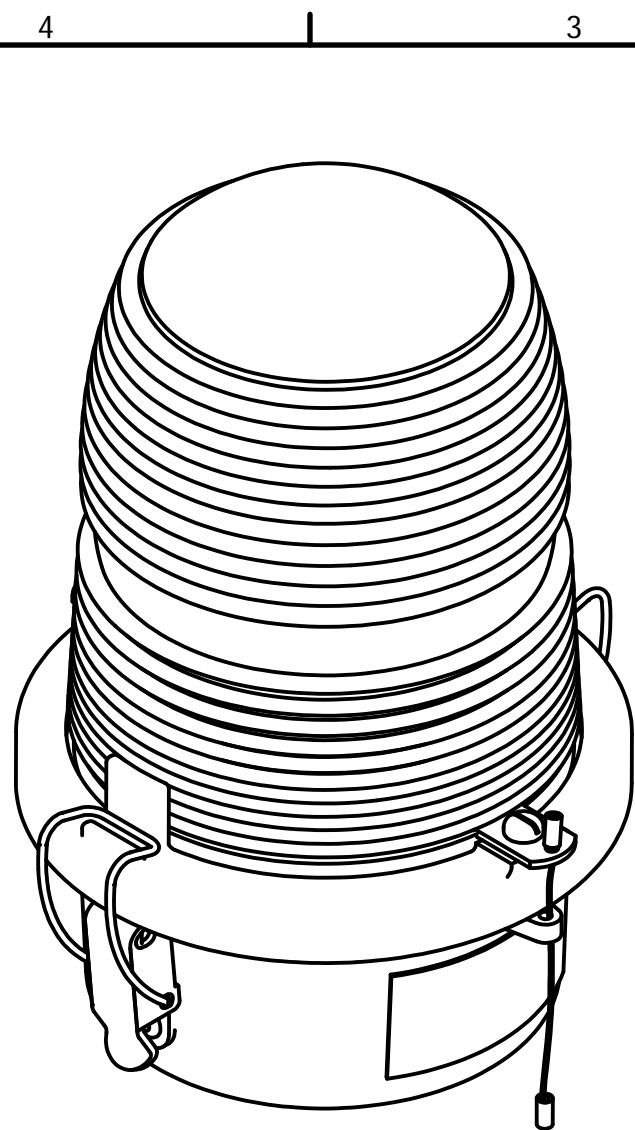


Parts List			
ITEM	QTY	PART NUMBER	DESCRIPTION
1	3	OL1/LED	3/4" OBSTRUCTION LIGHT
2	1	T27CG	3/4" CONDULET W/COVER AND GASKET
3	1	EL3430	3/4" 30° ELBOW
4	1	N34T3	3/4" X 3" NIPPLE
5	3	HC402	3/4" NO THREAD CONNECTOR
6	5	A314	3/4" CONDUIT LOCKNUTS
7	1	CONDUIT34	3/4" CONDUIT

NOTES:  
 1. THIS DRAWING IS A TYPICAL INSTALLATION DETAIL FOR 3 OL-1 PER LEVEL SYSTEM.  
 2. PART # EL3430 MAY BE OMITTED WHEN ARRANGING FOUR LEG TOWERS.  
 3. PART # CONDUIT34 CUT TO LENGTH FOR PROPER EXTENSION OF OL1 FROM STRUCTURE (6"-12"). ATTACH PART # HC402 TO UNTHREADED CONDUIT TO COMPLETE ASSEMBLY.  
 4. USE COUPLING THAT IS PROVIDED BY PART # CONDUIT34.  
 5. GREEN WIRE USED ONLY ON LED SIDELIGHTS

1	DRAWN Jbustamante		1/4/2008	CHECKED	GA
2	TITLE <b>TWR Lighting, Inc.</b> <i>Enlightened Technology</i>		MFG		
3	APPROVED		APPROVED		
4	SIZE B	DWG NO 100489	REV A	SCALE	
5	SHEET 1 OF 1				

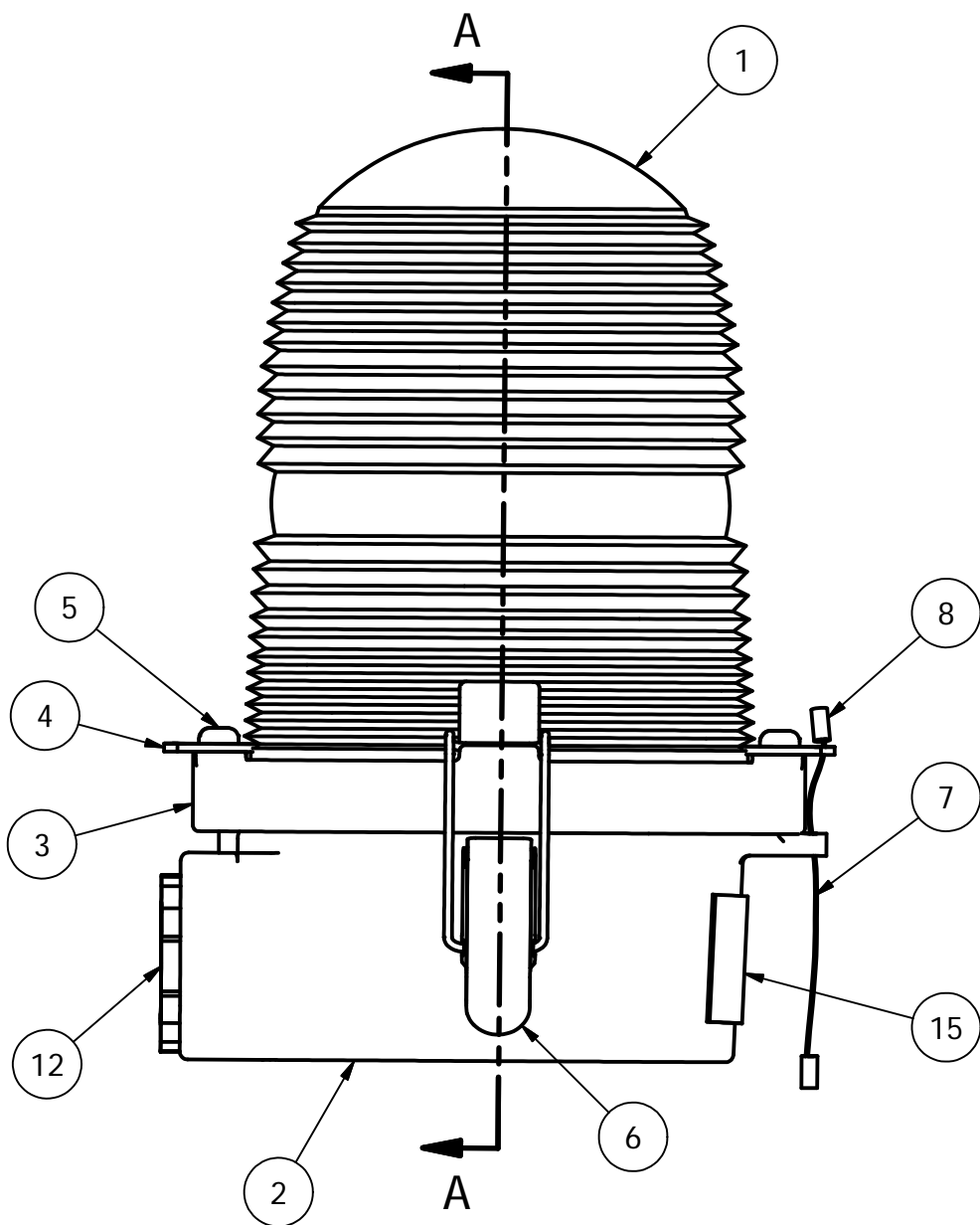
The use of non-OEM parts or modifications to original equipment design will void the manufacturer warranty and could invalidate the assurance of complying with FAA requirements as published in Advisory Circular 150/5345-43. NOTICE: The drawings and photographic images contained herein are the sole property of TWR Lighting, Inc. All information contained herein is not generally known shall be considered confidential except to the extent the information has been previously established. The drawings and photographic images contained herein may not be reproduced, copied or used as the basis for manufacture or sale or promotion or any other purpose without the expressed written permission of TWR Lighting, Inc.



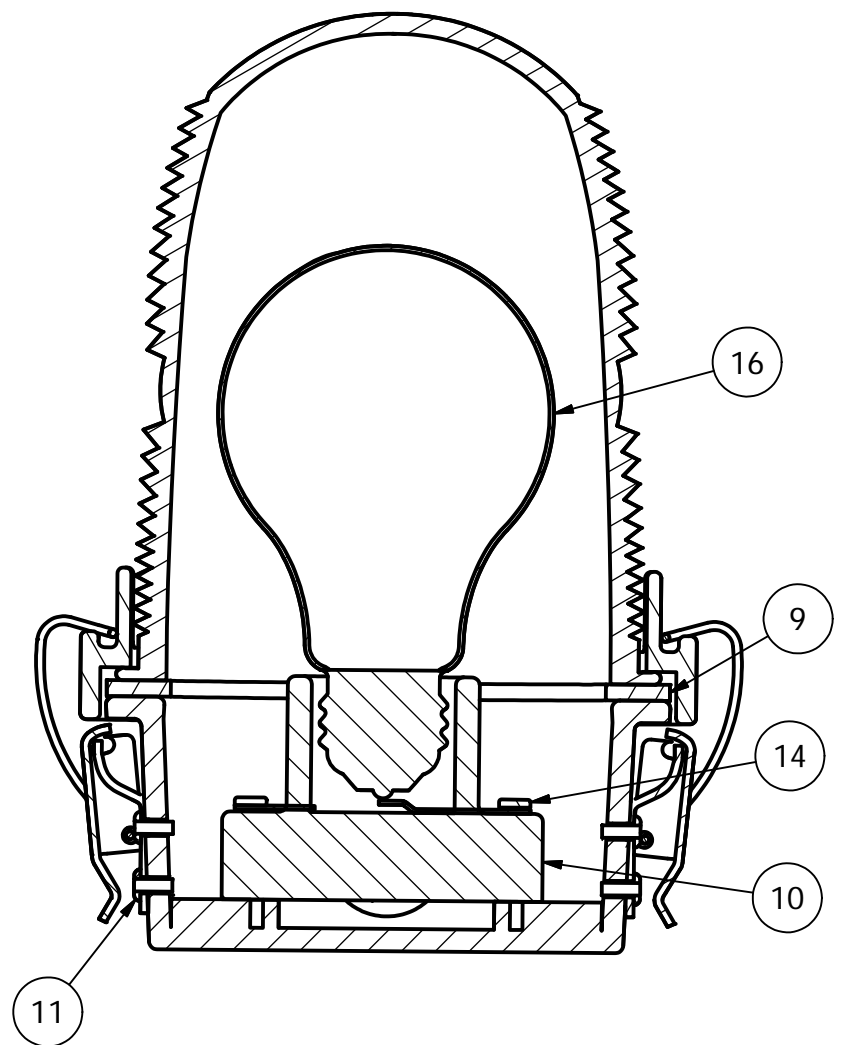
PARTS LIST			
ITEM	QTY	PART NUMBER	DESCRIPTION
1	1	AP35222	RED SIDELIGHT GLASS
2	1	105C	SINGLE SIDELIGHT BODY
3	1	106C	LENS HOLDER RING
4	2	12V245	OL LENS CLIP
5	2	832X14PH	8-32 X 1/4" PH SS SLOT SCREW
6	2	HC255SS	SIDELIGHT LATCH
7	1	7X7SS	1/16 HOL 7X7 S.S. WIRE
8	2	A1A	STAKON CRIMP
9	1	OLG	OL GASKET
10	1	TWR19062	SIDELIGHT RECEPTACLE
11	4	18PRSS	1/8 X .40 SS POP RIVET
12	1	A314	3/4" CONDUIT LOCKNUT GALV.
*	2	104G	WHITE TEFLON WASHER
14	2	832X34PH	8-32 X 3/4" S.S. RH SLOT
15	1	100327	OL1 SERIAL NUMBER LABEL
~	1	116A21TS	116W-120V LAMP (TYP.)

\* = PART NOT SHOWN  
 ~ = PART SOLD SEPARATELY

NOTE:  
 1. FAA APPROVED LIGHT USES THE 116A21TS LAMP.  
 OTHER LAMPS ARE AVAILABLE TO MEET YOUR APPLICATION.



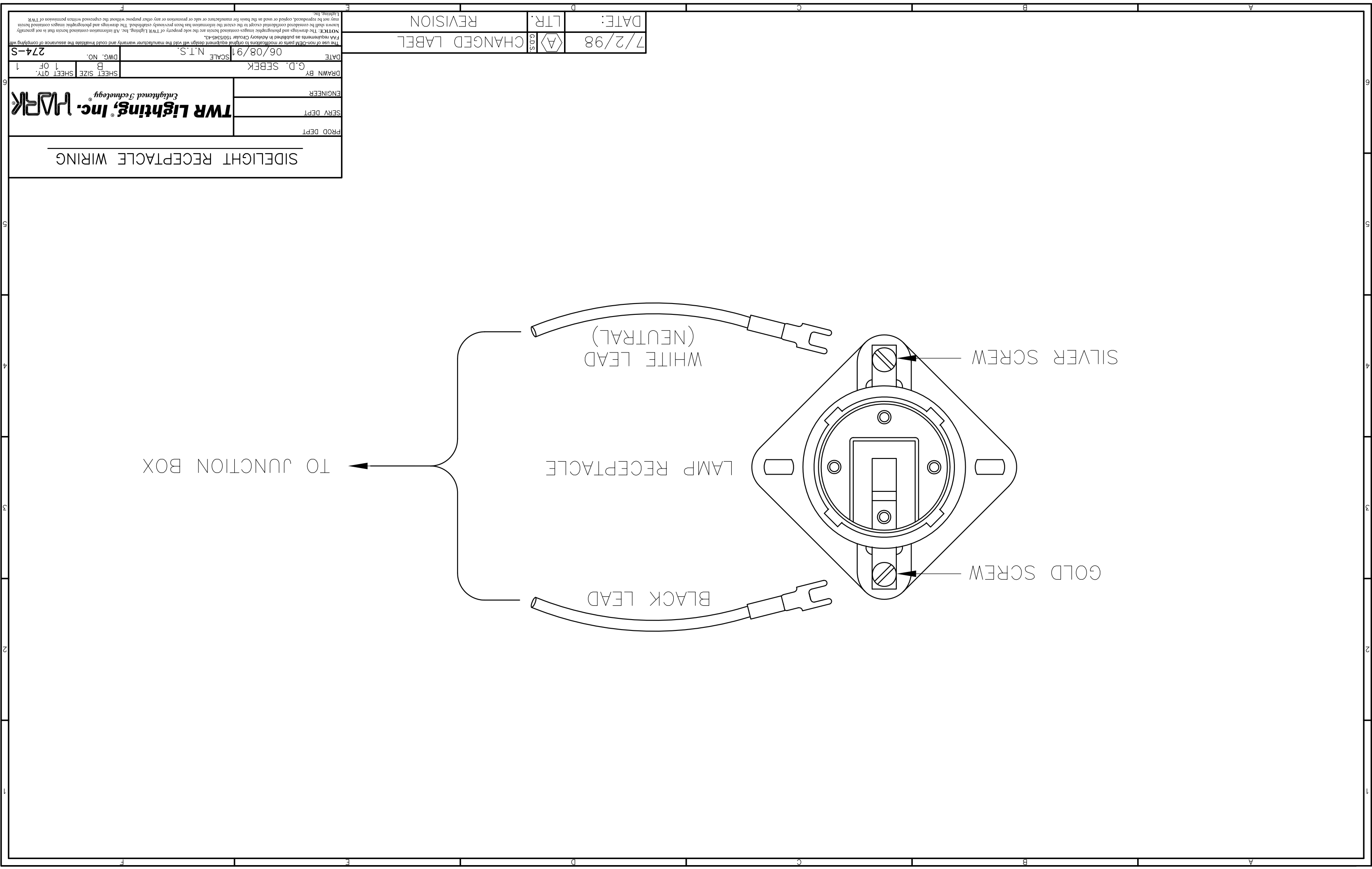
SECTION A-A



DRAWN	vhernandez	2/13/2012
CHECKED		
QA		
MFG		
APPROVED		

**TWR Lighting, Inc.** **WARK**  
 Enlightened Technology®

TITLE			
3/4" OL1 SIDE HUB ASSEMBLY DETAIL (PART#OL1)			
SIZE	B	DWG NO	279-OL
REV	C	SCALE	2/3
SHEET 1 OF 1			



SIDELIGHT RECEPTACLE WIRING

PROD DEPT

SERV DEPT

ENGINEER

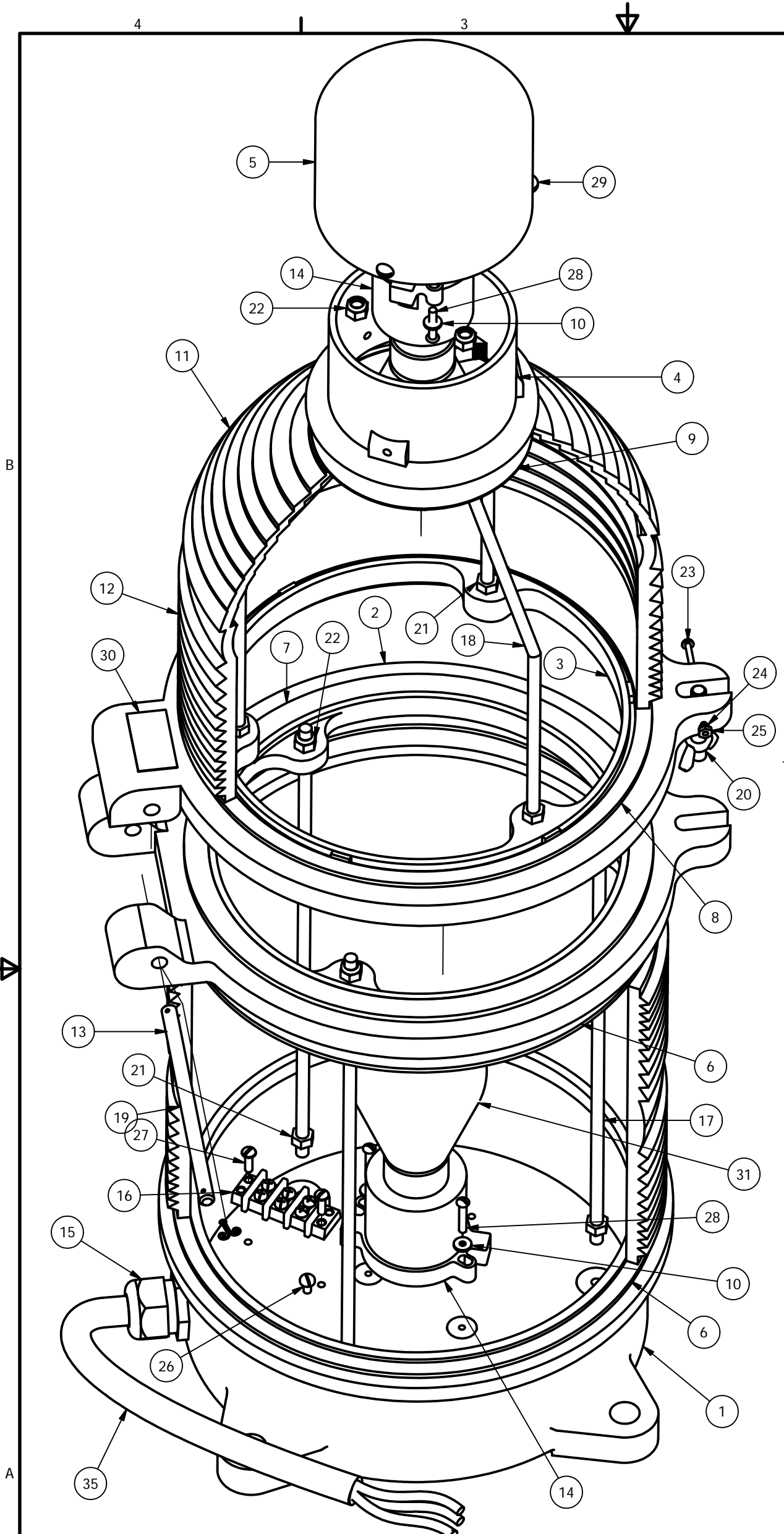
DRAWN BY G.D. SEBEK

DATE 06/08/91 SCALE N.T.S.

274-S

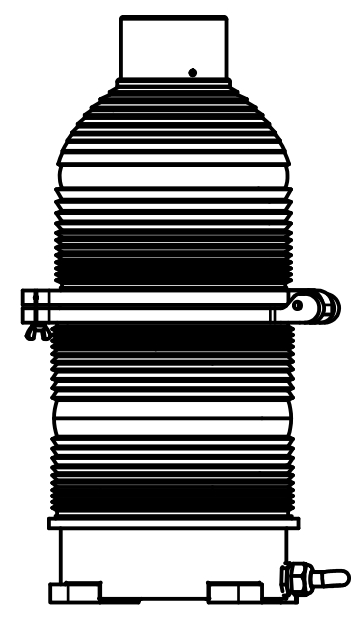
NOTICE: The drawings and photographic images contained herein are the sole property of TWR Lighting, Inc. All information contained herein that is not generally known shall be considered confidential except to the extent the information has been previously established. The drawings and photographic images contained herein may not be reproduced, copied or used as the basis for manufacture or sale or promotion or any other purpose without the expressed written permission of TWR Lighting, Inc.

DATE: 7/2/98	LTR.	REVISION
CHANGED LABEL		



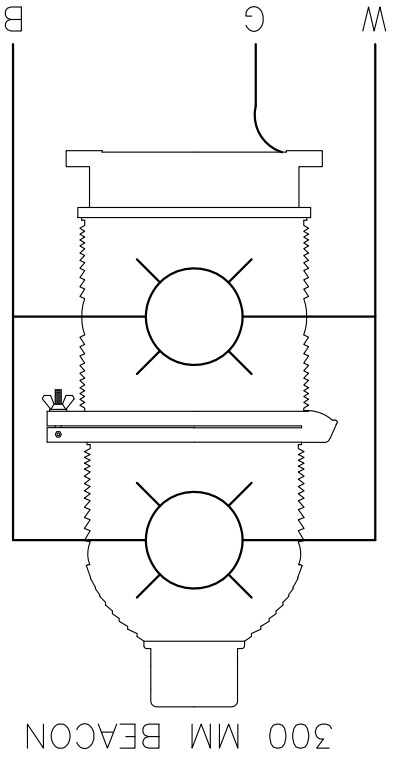
Parts List			
ITEM	QTY	PART NUMBER	DESCRIPTION
1	1	100C	BEACON BASE
2	1	101C	LOWER HINGE
3	1	102C	UPPER HINGE
4	1	103C	CANOPY CAP
5	1	104C	CANOPY FLANGE
6	2	100G	GASKET BEACON BASE
7	1	101G	GASKET MIDDLE BEACON
8	1	102G	GASKET, TOP HINGE
9	1	103G	GASKET TEFLON, TOP
10	4	104G	WHITE TEFLON WASHER
11	1	AP3557	CAP LENS RED
12	1	AP3556	MIDDLE LENS RED
13	2	AP3555	BOTTOM LENS RED
14	2	TWR23-546	BEACON LAMP RECEPTACLE
15	1	CGB295SA	3/4" CORD CONNECTOR .62 TO .75
16	1	TERMBLK3	TERMINAL BLOCK 3-PART
17	3	BTRS-1	BEACON TIE ROD STRAIGHT
18	3	BTRB	BEACON TIE ROD BENT
19	1	BHP	BEACON HINGE PIN W/ COTTER PIN
20	1	BLP	BEACON LATCH PIN
21	6	516NUT	5/16-15 HEX NUT
22	6	516NUTN	5/16-18 NUT W/NYLON INSERT
23	1	632X2RH	6-32 X 2 SS RH SLOT SCREW
24	1	632LW	6-32 LOCK WASHER
25	1	632NUT	6-32 NUT HEX
26	1	1032x38BH	10-32 X 3/8 PILLIPS PAN HEAD
27	2	1032x58PH	10-32 X 5/8 PH SLOT SCREW
28	4	1032X1RH	10-32 X 1 SS RH SCREW
29	3	1420X58RH	14-20 X 5/8 RH SLOT SCREW
30	1	100328	BEACON SERIAL NUMBER LABEL
31	2	---	BEACON LAMP
*	32	7	TYZ23M HI TEMP TY WRAPS T&B TEFZEL
*	33	4'	16HTWH #16 HI-TEMP WIRE SRML WHITE
*	34	4'	16HTBL #16 HI-TEMP WIRE SRML BLACK
35	5'	CSO14/3	S.O. CORD 14AWG/3 CONDUCTOR
*	36	11	YAV14-H34F (STAKON) BURNDY HEAVY DUTY

\* = ITEMS NOT SHOWN  
 ~ = PART SOLD SEPARATELY

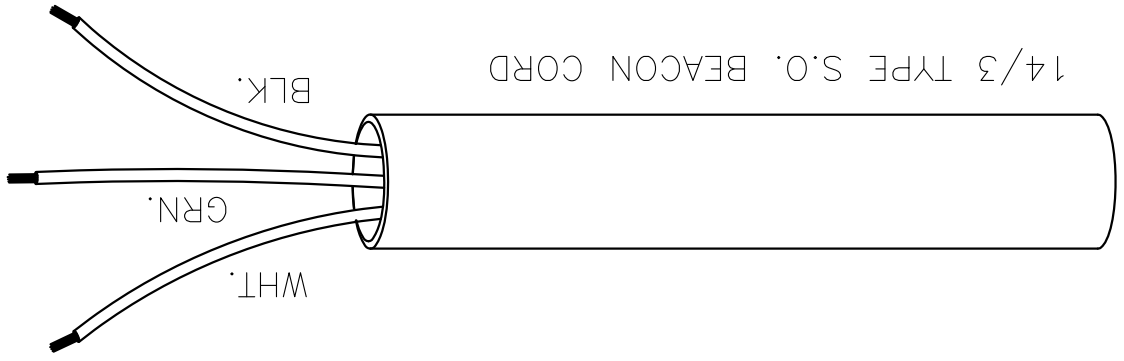


DRAWN J.L.BUSTAMANTE	11/27/07	<b>TWR Lighting, Inc.</b> <i>Enlightened Technology®</i> <b>300 MM BEACON ASSEMBLY DETAIL</b>		
CHECKED				
QA				
MFG				
APPROVED				
		SIZE B	DWG NO 275-B	REV E
		SCALE	SHEET 1 OF 1	

The use of non-OEM parts or modifications to original equipment design will void the manufacturer warranty and could invalidate the assurance of complying with FAA requirements as published in Advisory Circular 150/5345-43. NOTICE: The drawings and photographic images contained herein are the sole property of TWR Lighting, Inc. All information contained herein that is not generally known shall be considered confidential except to the extent the information has been previously established. The drawings and photographic images contained herein may not be reproduced, copied or used as the basis for manufacture or sale or promotion or any other purpose without the expressed written permission of TWR Lighting, Inc.



- 1) WHITE WIRE IS NEUTRAL TO BOTH LAMPS.
- 2) BLACK WIRE IS LINE TO BOTH LAMPS.
- 3) GREEN WIRE IS EARTH GROUND.



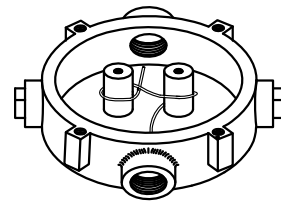
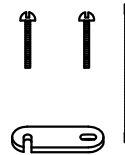
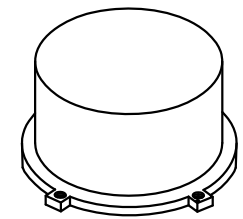
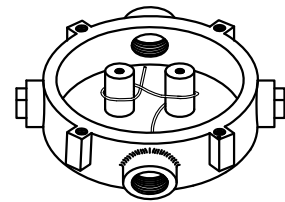
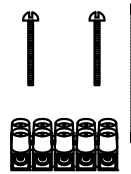
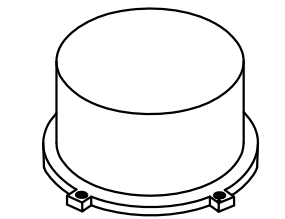
300 MM BEACON WIRE

PROD DEPT  
SERV DEPT  
ENGINEER

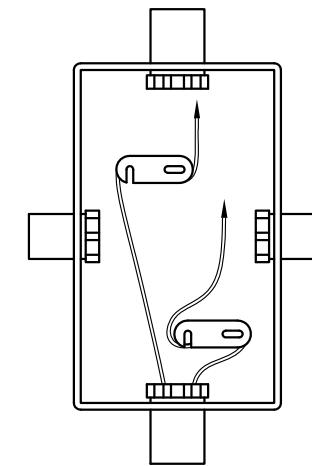
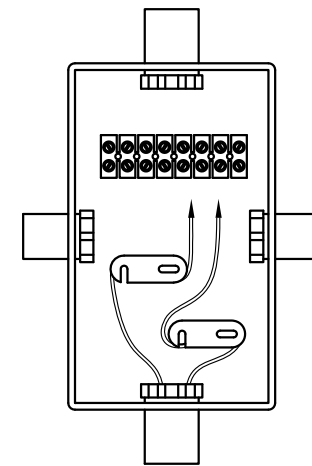
DRAWN BY G.D. SEBEK  
DATE 6/10/91  
SCALE N.T.S.

DWG. NO. B  
SHEET SIZE B  
SHEET QTY. 1 OF 1  
273-B

NOTICE: The drawings and photographic images contained herein are the sole property of TWR Lighting, Inc. All information contained herein that is not generally known shall be considered confidential except to the extent the information has been previously established. The drawings and photographic images contained herein may not be reproduced, copied or used as the basis for manufacture or sale or promotion or any other purpose without the expressed written permission of TWR Lighting, Inc.



JB-5 AND JB-0  
3/4" JUNCTION BOX



JB-8 AND JB-8SR  
1" JUNCTION BOX

NOTES:

- 1) DRAWING ILLUSTRATES METHOD OF STRAIN RELIEVING WIRE. USE THIS METHOD ON ALL JUNCTION BOXES.
- 2) THE NATIONAL ELECTRICAL CODE-ARTICLE 300-19-B3 REQUIRES CONDUCTORS IN A VERTICAL CONDUIT BE SUPPORTED TO RELIEVE STRAIN ON TERMINAL BLOCK CONNECTIONS.
- 3) SKETCH ILLUSTRATES METHOD OF STRAIN RELIEVING A SINGLE CONDUCTOR. SEVERAL CONDUCTORS MAY BE GROUPED TOGETHER.
- 4) CONDUCTORS MAY BE MIXED BUT SHOULD NOT TAKE UP MORE THAN 40% OF CONDUIT'S INSIDE AREA.

USING THIS JUNCTION BOX METHOD SPACING IS 100 FEET MAXIMUM.

AWG WIRE SIZE	MAX. NUMBER WIRES IN 3/4" CONDUIT	MAX. NUMBER WIRES IN 1" CONDUIT	WIRE AREA SQ. INCHES	WEIGHT PER 100 FEET
12 THHN	16	26	0.0117	2.50
10 THHN	10	17	0.0184	4.10
8 THHN	6	9	0.0373	6.70
6 THHN	4	7	0.0519	10.30
4 THHN	2	4	0.0845	16.20

<u>JUNCTION AND STRAIN RELIEF BOXES</u>					
PROD DEPT	<b>TWR Lighting, Inc.</b> <i>Enlightened Technology®</i>				
SERV DEPT					
ENGINEER					
DRAWN BY	G.D. SEBEK	SHEET SIZE	B	SHEET QTY.	1 OF 1
DATE	07/26/93	SCALE	N.T.S.	DWG. NO.	100089

9/29/00	(A)	UPDATED NOTES
DATE:	LTR.	REVISION

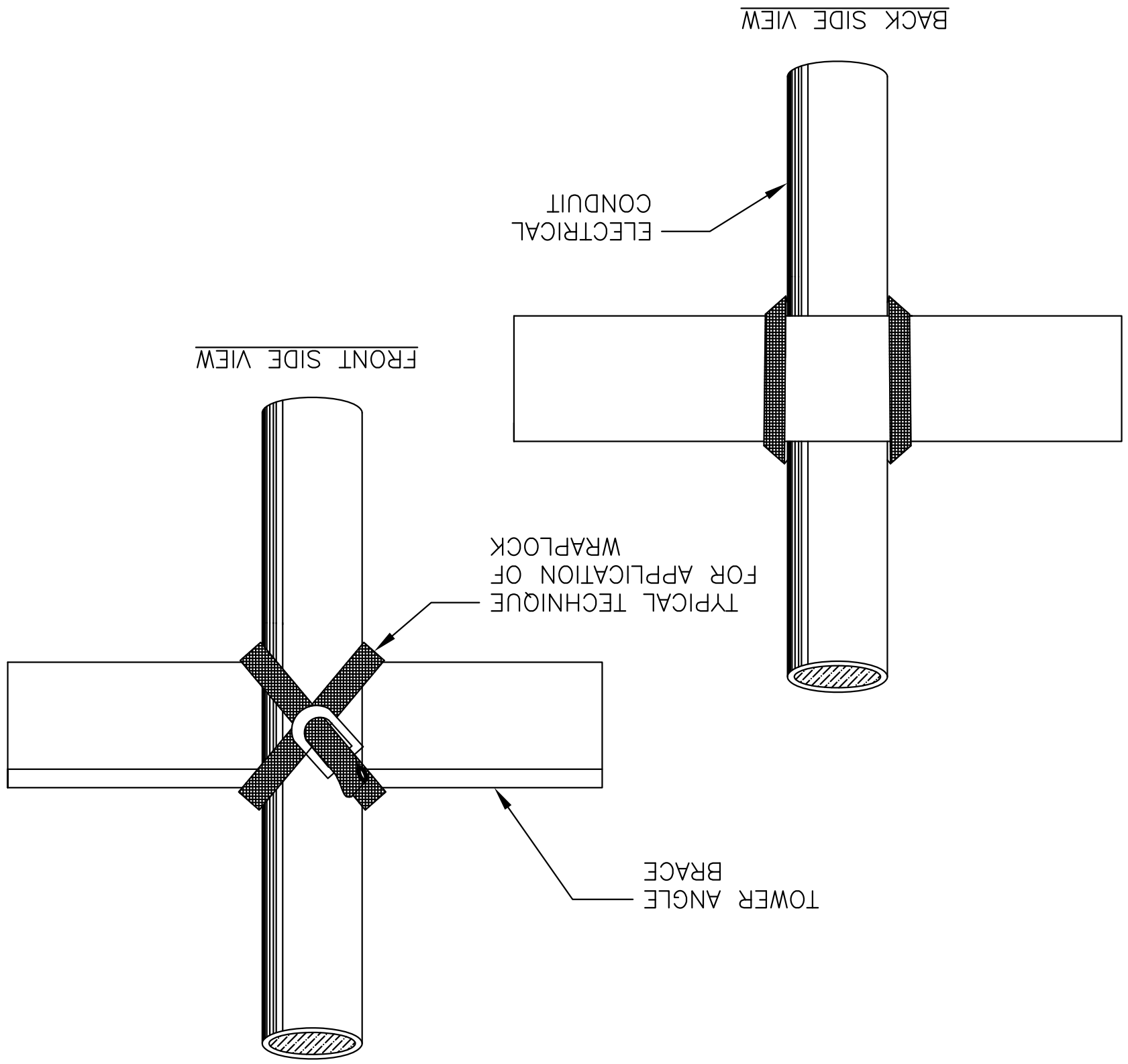
The use of non-OEM parts or modifications to original equipment design will void the manufacturer warranty and could invalidate the assurance of complying with FAA requirements as published in Advisory Circular 150/5345-43.  
NOTICE: The drawings and photographic images contained herein are the sole property of TWR Lighting, Inc. All information contained herein that is not generally known shall be considered confidential except to the extent the information has been previously established. The drawings and photographic images contained herein may not be reproduced, copied or used as the basis for manufacture or sale or promotion or any other purpose without the expressed written permission of TWR Lighting, Inc.

ENGINEER		APPROVED	
TWR Lighting, Inc. MARK		APPROVED	
TWR Lighting, Inc. MARK		APPROVED	
DATE	05/01/2014	SCALE	N.T.S.
DWG. NO.	100984		
DRAWN BY	M. PETERMAN	SHEET SIZE	B
		SHEET QTY.	1 OF 1

**WRAPLOCK FASTENING DETAIL**

**DIRECTIONS FOR USING Wraplock**  
 CUT OFF BAND TO PROPER LENGTH.  
 (SEE TABLE ON COVER OF BOX)

1. — PASS ONE END THROUGH YOKE AND BEND BACK ABOUT 1 1/2" AND FLATTEN DOWN.
2. — PASS BAND AROUND WORK AND THROUGH YOKE.
3. — REPEAT AND PASS END THROUGH A SECOND TIME, DRAW UP FREE END SNUGLY WITH PLIERS.
4. — INSERT FREE END IN SLOT OF RATCHET. TURN DOWN UNTIL CLAMP IS TIGHT.
5. — BACK OFF SLIGHTLY TO REMOVE RATCHET. CLAMP IS NOW SECURELY LOCKED.
6. — TO REMOVE Wraplock UNCOIL END WITH RATCHET. PRESS DOWN AT POINT WHERE BAND METAL HAS BEEN FORCED THROUGH CURVED PART OF YOKE.



NOTICE: The drawings and photographic images contained herein are the sole property of TWR Lighting, Inc. All information contained herein that is not generally known shall be considered confidential except to the extent the information has been previously established. The drawings and photographic images contained herein may not be reproduced, copied or used as the basis for manufacture or sale or promotion or any other purpose without the expressed written permission of TWR Lighting, Inc.